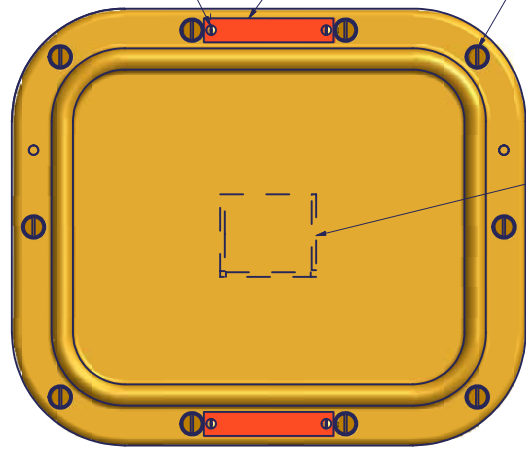
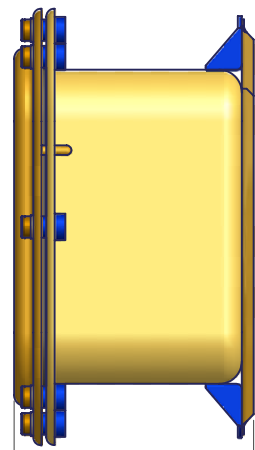


ZONE		REV	DESCRIPTION	DATE	AUTH
4B	3A	A	ADDED: DOUBLE ASTERISKS TO TABLE FOR M24142/6-002. AUTH: MFR REQ. REVISED: TOLERANCE BLOCK WAS +/- 1/64. AUTH: NAVSEA LTR 9320 SER: 03E2/036, 14MAR1995.	11/4/09	WW

RHMS, BRASS, 6-32 X 1/4" (TYP)
IDENTIFICATION PLATE 2 PLACES
"F" (NO. REQ'D) 3/8-16" BRASS CAPTIVE COVER BOLT AND 3/8" BRASS WASHER. (TYP)

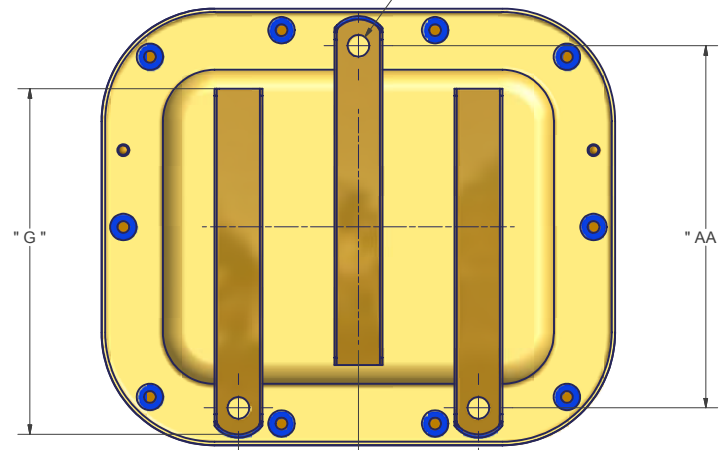


FRONT VIEW W/FLAT COVER
8 X 10 SHOWN

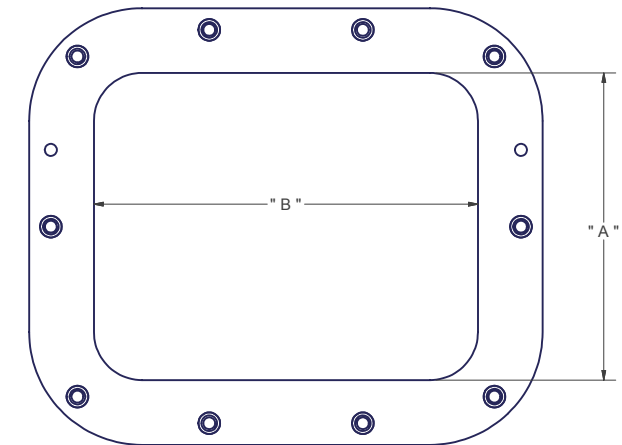


SIDE VIEW W/FLAT COVER

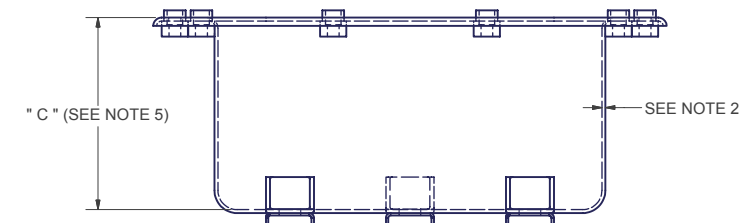
Ø9/16 MTG HOLES (TYP) FOR 1/2" MOUNTING BOLTS.



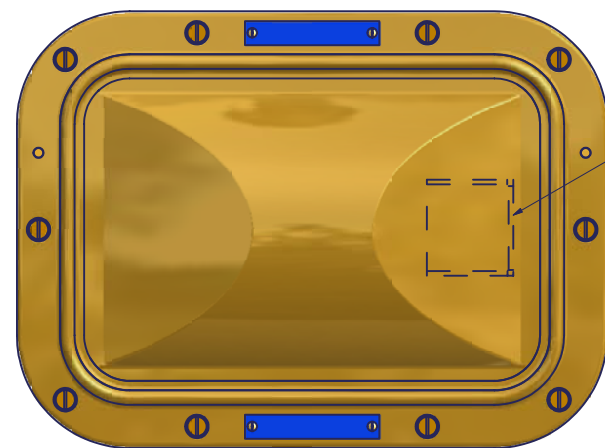
BACK VIEW



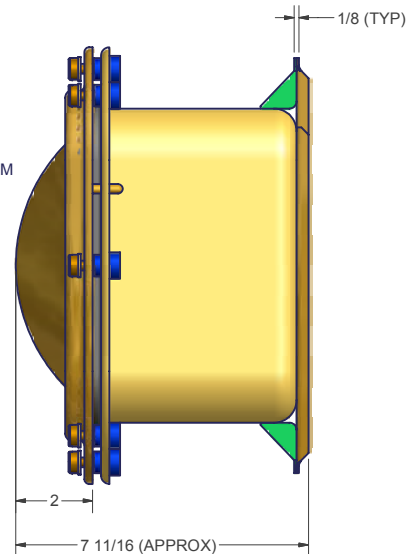
FRONT VIEW LESS COVER



END VIEW

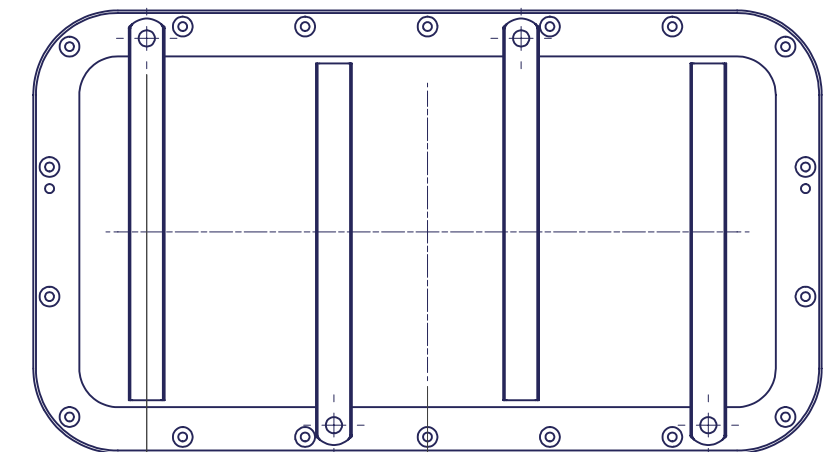


FRONT VIEW W/ DOMED COVER
8 X 12 SHOWN



SIDE VIEW W/ DOMED COVER

- NOTES:
1. MATERIAL: BRASS, PER ASTM B-36.
2. SHEET METAL GAGE: PRIOR TO DRAWING SHALL BE 3/32".
3. EFFECTIVENESS OF ENCLOSURE TIGHTNESS: 15 FEET SUBMERSIBLE PER MIL-STD-108.
4. ENCLOSURES SHALL WITHSTAND SHOCK TEST PER MIL-S-901 FOR GRADE A, CLASS I, TYPE A EQUIPMENT AND VIBRATION TEST PER MIL-STD-167-1, TYPE 1.
5. ENCLOSURE DEPTH LESS THAN 5" IS AVAILABLE PER SPECIAL ORDER.
6. COVER GASKET DETAILS CAN BE FOUND ON COMSACO DRAWING 100146.
7. THIS DRAWING DEVELOPED FROM MIL-E-24142/6G.



BACK VIEW SIZE 12 X 24

TABLE

COMSACO PART NO.	SIZE	"A"	"B"	"C"	"D"	"E"	"F"	"G"	"AA"	"BB"	"CC"	"DD"	"EE"	COVER GASKET COMSACO P/N
M24142/6-001*	8 X 10	8	10	5	11-3/8	13-3/8	10	9	9-7/16	6-1/4	3-1/8	—	—	100146-1
M24142/6-002	8 X 12	8	12	5	11-3/8	15-3/8	10	9	9-7/16	8-1/4	4-1/8	—	—	100146-2**
M24142/6-003	10 X 10	10	10	5	13-3/8	13-3/8	8	11	11-7/16	5-3/4	2-7/8	—	—	100146-3
M24142/6-004	10 X 13	10	13	5	13-3/8	16-3/8	10	11	11-7/16	9-1/4	4-5/8	—	—	100146-4
M24142/6-005	10 X 16	10	16	5	13-3/8	19-3/8	10	11	11-7/16	11-3/4	5-7/8	—	—	100146-5
M24142/6-006	10 X 18	10	18	5	13-3/8	21-3/8	12	11	11-7/16	14-1/4	7-1/8	—	—	100146-6
M24142/6-007	10 X 20	10	20	5	13-3/8	23-3/8	12	11	11-7/16	13	6-1/2	—	—	100146-7**
M24142/6-008	12 X 13	12	13	5	15-3/8	16-3/8	10	13	13-7/16	9-1/4	4-5/8	—	—	100146-8
M24142/6-009	12 X 17	12	17	5	15-3/8	20-3/8	10	13	13-7/16	12	6	—	—	100146-9
M24142/6-010	12 X 24	12	24	5	15-3/8	27-3/8	18	13	13-7/16	6-1/2	3-1/4	9-3/4	19-1/2	100146-10
M24142/6-011	14 X 14	14	14	5	17-3/8	17-3/8	12	15	15-7/16	10-1/4	5-1/8	—	—	100146-11**
M24142/6-012	14 X 16	14	16	5	17-3/8	19-3/8	12	15	15-7/16	12-1/4	6-1/8	—	—	100146-12
M24142/6-013	14 X 20	14	20	5	17-3/8	23-3/8	14	15	15-7/16	16	8	—	—	100146-13
M24142/6-014	14 X 26	14	26	5	17-3/8	29-3/8	16	15	15-7/16	7	3-1/2	10-1/2	21	100146-14

* COMSACO PART NUMBERS FOLLOWED BY (F) FOR FLAT COVER, (D) FOR DOMED.
** LISTED FOR REFERENCE ONLY. SO RARELY USED THAT TOOLING MAY NOT BE AVAILABLE.

UNLESS OTHERWISE SPECIFIED DIMENSIONS ARE IN INCHES TOLERANCES ARE: FRACTIONS DECIMALS ANGLES +/- 1/8 .XX .XXX .005

DRAWN CHRIS WINDLEY 4/23/2004	COMSACO, INC. NORFOLK, VA. 23502
CHECKED WALTER WESTHOFF 4/27/2004	
QA	TITLE ENCLOSURES FOR ELECTRICAL FITTINGS & FIXTURES, M24142/6
MFG	SIZE CODE IDENT NO. DWG NO. REV D 57626 M24142/6 A
APPROVED	SCALE SHEET 1 OF 1