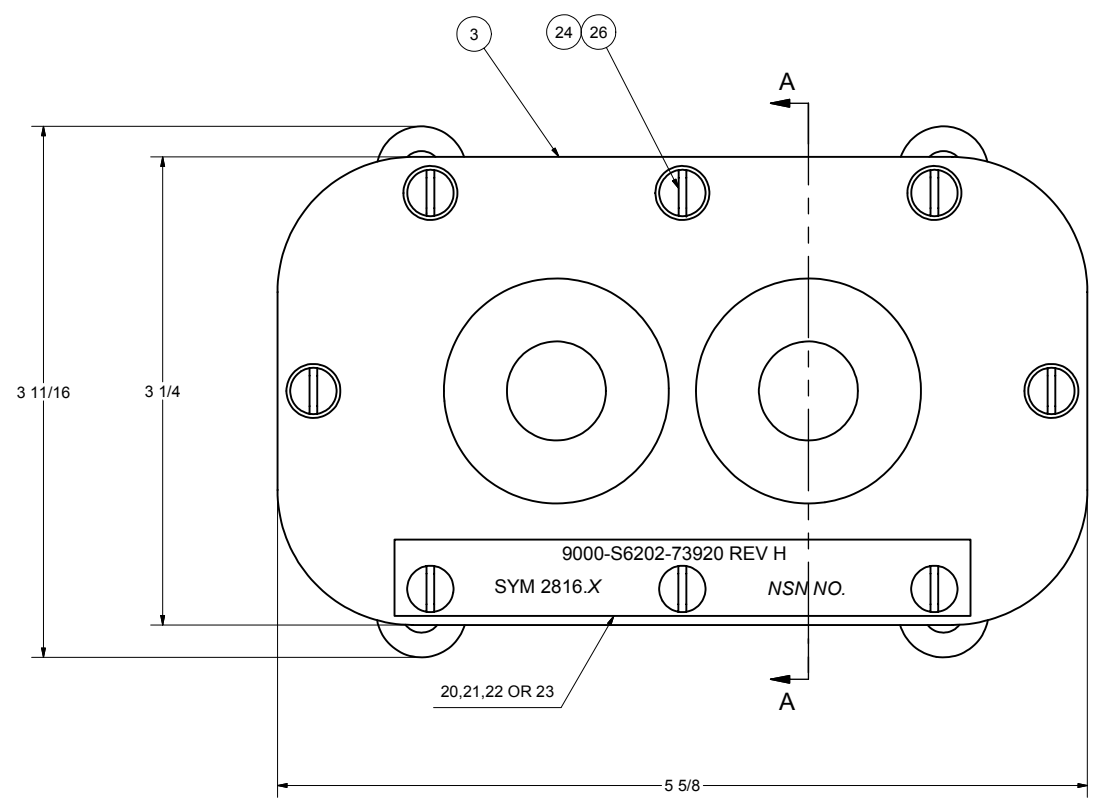
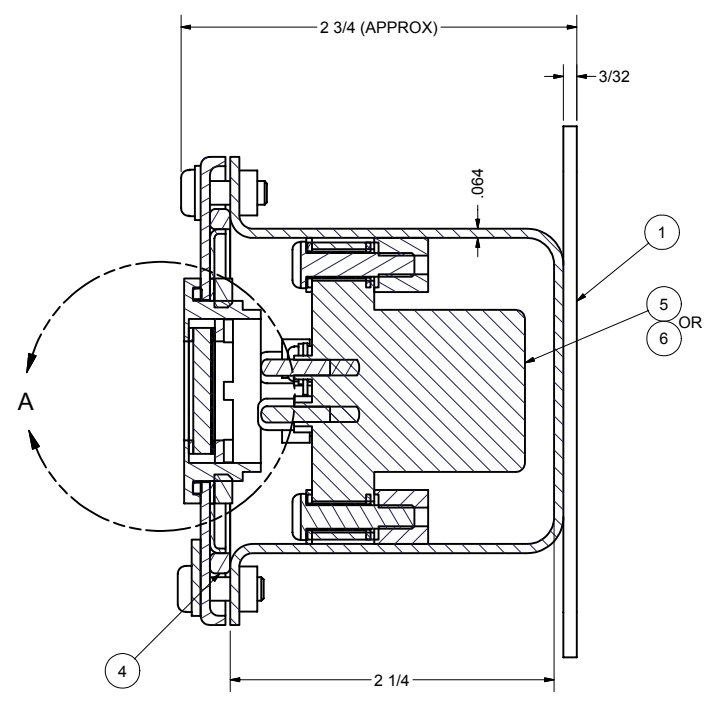


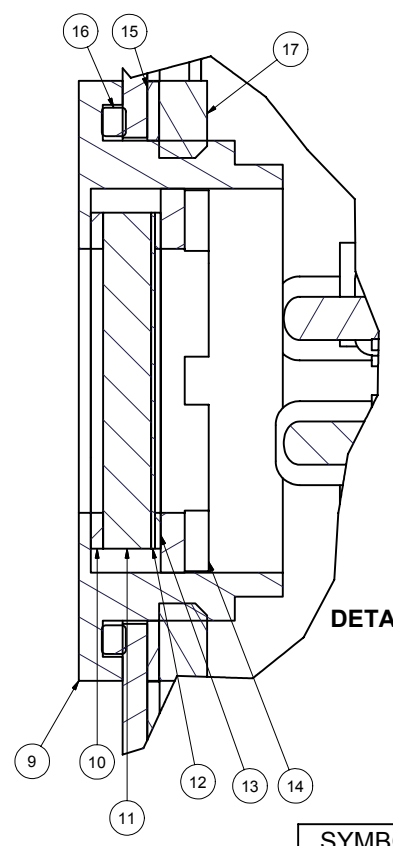
REVISIONS				
ZONE	REV	DESCRIPTION	DATE	AUTH



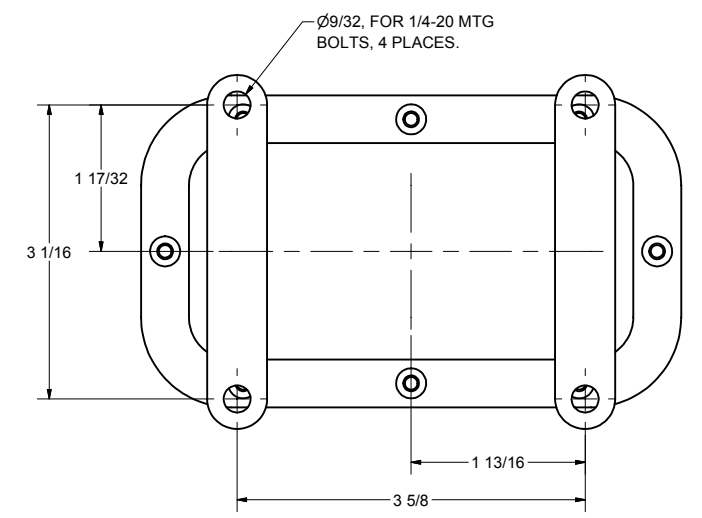
FRONT VIEW (TYP) EXCEPT LESS MTG LEGS .3 & .4



SECTION A-A



DETAIL A



BACK VIEW (.1 & .2)

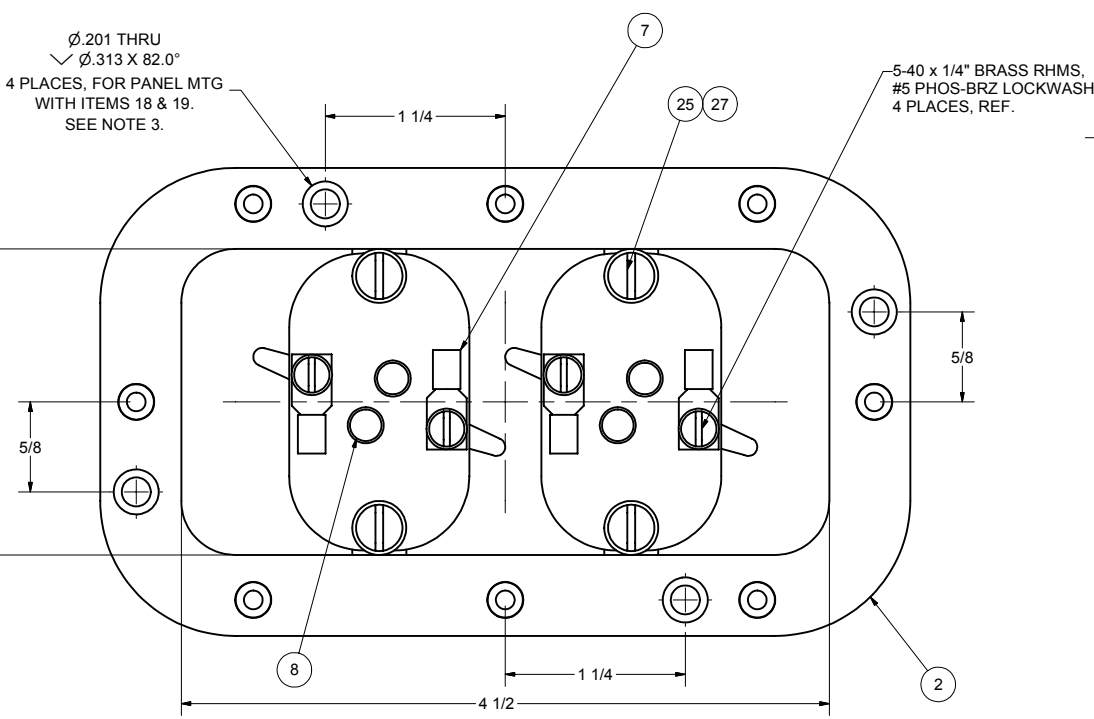
TABLE II

LENS P/N	COLOR
MS17153-3	CLEAR
MS17153-5	CLEAR*
MS17153-7	GREEN*
MS17153-9	BLUE*
MS17153-11	AMBER*
MS17153-13	YELLOW*
MS17153-15	RED*

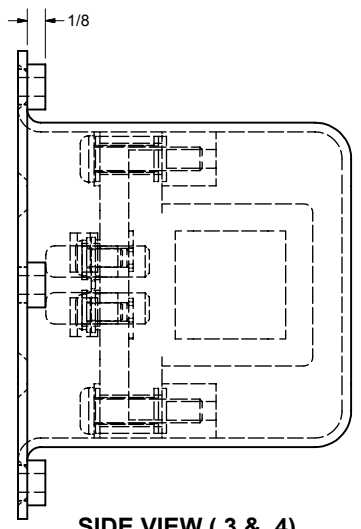
* ETCHED ON ONE SIDE.

TABLE I

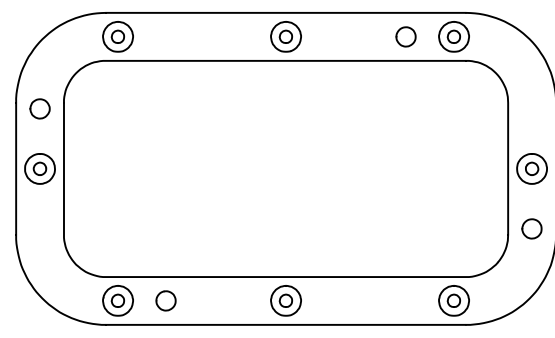
SYMBOL	TYPE	VOLTAGE	MOUNTING	NSN NO.	WEIGHT
2816.1	B-46A	117VAC	BASE	6210-00-336-5869	2.2 LBS
2816.2	B-46B	450VAC	BASE	6210-00-336-5870	2.2 LBS
2816.3	B-46C	117VAC	PANEL	6210-00-866-1338	2 LBS
2816.4	B-46D	450VAC	PANEL	6210-00-866-1339	2 LBS



FRONT VIEW (.3 & .4) LESS COVER
SEE NOTE 4



SIDE VIEW (.3 & .4)



BACK VIEW (.3 & .4)

- NOTES:**
1. THESE ENCLOSURES ARE WATERTIGHT PER MIL-STD-108.
 2. FINISH: INTERIOR WITH WHITE ENAMEL.
 3. ITEMS 8, 10, 12, 13, 14, 18, 19 & 28 SHALL BE KITTED AND SECURED INSIDE ENCLOSURE.
 4. RECOMMENDED PANEL CUTOUT 2-15/16" X 4-11/16" WITH 1/2" RADIUS CORNERS FOR INSTALLATION OF .3 & .4.
 5. LENS COLOR AND MARKER DISC ENGRAVING PER CUSTOMER PURCHASE ORDER.
 6. THIS DRAWING DEVELOPED FROM BUSHIPS DWG 9-S-73920H.

ASSY		Parts List				
4	3	2	1	ITEM	PART NUMBER	DESCRIPTION
—	—	1	1	1	73920-1	BOX WELDMENT, BRASS, 2-1/8 X 4-1/2 X 2-1/4
1	1	—	—	2	73920-18	BOX WELDMENT, BRASS, 2-1/8 X 4-1/2 X 2-1/4
1	1	1	1	3	73920-2	COVER WELDMENT, BRASS, 2-1/8 X 4-1/2
1	1	1	1	4	MS28775-242	"O" RING GASKET, RUBBER
—	2	—	2	5	73919-3	LIGHT UNIT ASSEMBLY, 117VAC
2	—	2	—	6	73919-4	LIGHT UNIT ASSEMBLY, 450VAC
4	4	4	4	7	MS21004-9	TERM LUG, UNINSUL, #18-14AWG, #5 STUD
4	4	4	4	8	MS15612-3	LAMP, 2.5V, 2A, INDUSTRY #1769
2	2	2	2	9	73919-44	LENS HOLDER, BRASS
2	2	2	2	10	100268	GASKET, LENS, RUBBER
2	2	2	2	11	MS17153-X	LENS, PLASTIC, SEE TABLE II
2	2	2	2	12	100269	MARKER DISC, BRASS, FURNISHED BLANK
2	2	2	2	13	100267	SLIP RING, BRASS, 7/8" OD
2	2	2	2	14	73919-48	LOCKING RING, BRASS
2	2	2	2	15	100266	SLIP RING, BRASS, 1-9/16" OD
2	2	2	2	16	MS28775-026	"O" RING, GASKET, RUBBER
2	2	2	2	17	73919-14	NUT, LENS HOLDER, BRASS
4	4	—	—	18	73919-55	SPACER PAD, BRASS, 3/8" OD X 1/8" THK
4	4	—	—	19	100717	SCREW, FHM, BRASS, 10-24 X 23/32" LG
—	—	—	1	20	100485-1	INFO PLATE, BRASS, ENGRAVED, SYM 2816.1
—	—	1	—	21	100485-2	INFO PLATE, BRASS, ENGRAVED, SYM 2816.2
—	1	—	—	22	100485-3	INFO PLATE, BRASS, ENGRAVED, SYM 2816.3
1	—	—	—	23	100485-4	INFO PLATE, BRASS, ENGRAVED, SYM 2816.4
8	8	8	8	24	X-RHM-BRS-832-500	SCREW, RHM, BRASS, 8-32 X 1/2" LG
4	4	4	4	25	X-RHM-BRS-832-750	SCREW, RHM, BRASS, 8-32 X 3/4"
5	5	5	5	26	X-FLW-BRS-8	WASHER, FLAT, BRASS, #8
4	4	4	4	27	X-ELW-PHB-8	WASHER, EXT TOOTH, PHOS-BRZ, #8
4	4	4	4	28	COMMERCIAL	SLEEVEING, WIRE TERMINAL, 1/2" LG, SIZE #7

DRAWN	CHRIS WINDLEY	9/2/2005
CHECKED	W WESTHOFF	9/9/2005
QA		
MFG		
APPROVED		

COMSACO, INC.
NORFOLK, VA. 23502

INDICATOR LIGHT ASSY, BRASS, TWO DIAL

SIZE: **D 57626** DWG NO: **404-2816**

SCALE: SHEET 1 OF 1

UNLESS OTHERWISE SPECIFIED DIMENSIONS ARE IN INCHES TOLERANCES ARE:

FRACTIONS	DECIMALS	ANGLES
+/- 1/64	.XX	.XXX .005

NEXT ASSY	USED ON
-----------	---------