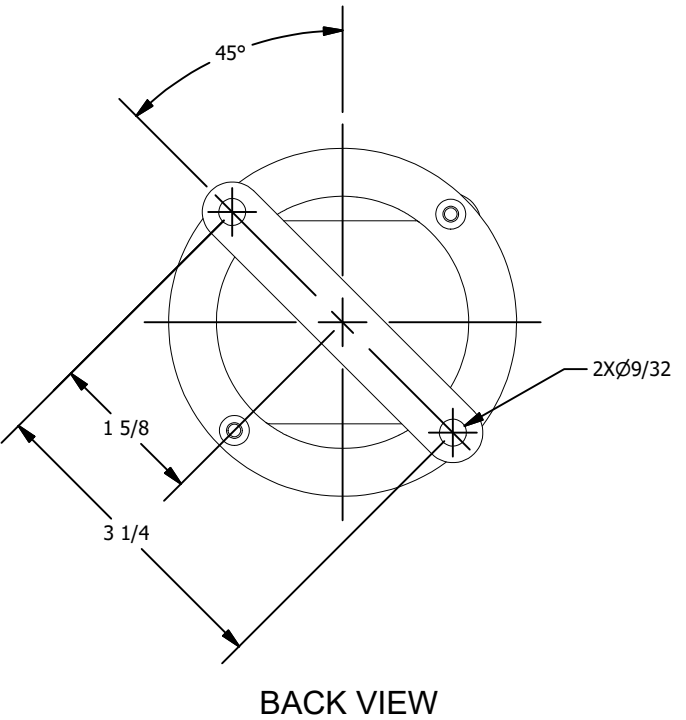
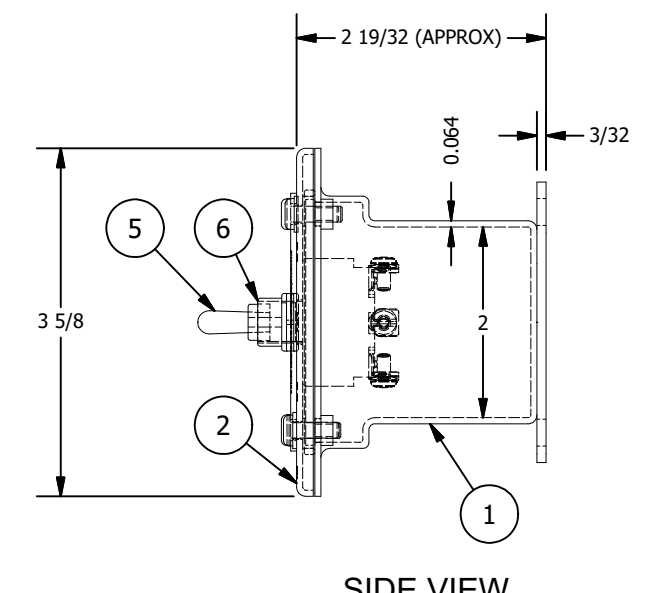
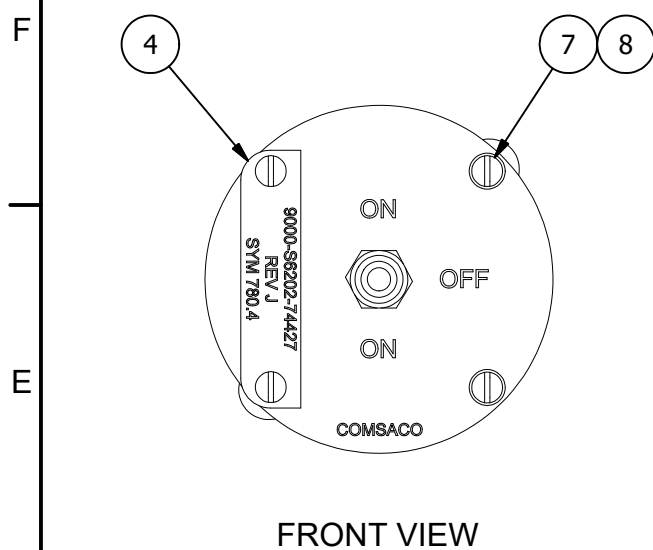
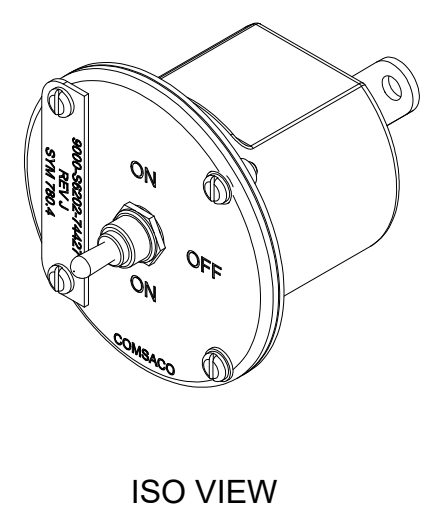
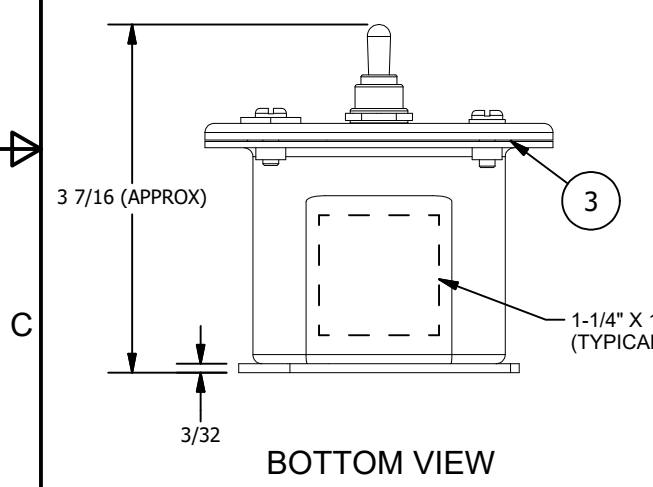


8 7 6 5 4 3 2 1



REVISION HISTORY				
ZONE	REV	DESCRIPTION	DATE	APPROVED
-	A	ADDED: WEIGHT TO NOTE 2. REVISED: P/N MS35059-21 WAS 35059-21.	1/13/98	WW
-	B	REVISED: NAMEPLATE CORNERS WERE 45°.	8/2/00	AW
ALL	C	REVISED: DWG INTO CAD FORMAT.	6/19/09	WW
5B ALL 1A	D	ADDED: TITLE TO ISO VIEW. REVISED: DWG FORMAT. TITLE, WAS "DPST"; TYPO. AUTH: DESIGN REQ.	12/1/16	AW



- NOTES:**
- THIS DRAWING DEVELOPED FROM BUSHIPS DRAWING 9-S-74427 REV J.
 - RATINGS AND SPECIFICATIONS:
 - 125 VOLTS, 10A-AC, 5A-DC
 - SWITCH ACTION-DPDT, 6 TERMINAL.
 - DEGREE OF ENCLOSURE: WATERTIGHT PER MIL-STD-108.
 - MAGNETIC PERMEABILITY: LESS THAN 2.0 FERROUS MATERIALS: NONE.
 - WEIGHT: 1 LB.
 - UNLESS OTHERWISE SPECIFIED, CABLE ENTRANCE DEVICES WILL BE PROVIDED AND INSTALLED BY THE INSTALLING ACTIVITY.
 - SHOCK AND VIBRATION APPROVAL BY EXTENSION HAS BEEN GRANTED FOR THIS EQUIPMENT BASED ON SIMILARITY TO SYMBOL 2815.2 PER SUPERVISOR OF SHIPBUILDING, CONVERSION AND REPAIR, USN NEWPORT NEWS, LTR 9072/9073 SER CVN 73-272A/2336 DATED 20NOV1992.
 - SYM 780.4 LISTED UNDER NSN # 5930-00-522-5646 AND CID/APL # 219990564.

PARTS LIST			
ITEM	QTY	PART NUMBER	DESCRIPTION
1	1	200201	BOX WELDMENT, BRASS, 2-1/2" RND
2	1	200181-102	COVER WELDMENT, BRASS, 2-1/2" RND
3	1	MS28775-231	O-RING, RUBBER, COVER GASKET
4	1	100307-2	NAMEPLATE, BRASS, ENGRAVED
5	1	MS35059-21	SWITCH, TOGGLE, 125V, ON-OFF-ON
6	1	N1030B	BOOT, TOGGLE SWITCH
7	4	X-RHM-BRS-832-500	SCREW, RHM, BRASS, 8-32 X 1/2"
8	2	X-FLW-BRS-8	WASHER, FLAT, BRASS, #8

<small>THIS DRAWING/DOCUMENT CONTAINS INFORMATION WHICH IS PROPRIETARY TO AND PROPERTY OF COMSACO, INC. IT IS DISTRIBUTED WITH THE UNDERSTANDING THAT IT WILL BE RETAINED IN CONFIDENCE AND WILL NEITHER BE DUPLICATED NOR COPIED IN WHOLE OR IN PART NOR USED FOR ANY PURPOSE OTHER THAN THAT FOR WHICH DISCLOSED WITHOUT EXPRESS WRITTEN PERMISSION FROM COMSACO, INC.</small>	REDRAWN DAVID POWELL 12/1/2016		COMSACO INC. NORFOLK, VA 23502
	ORIGINAL CHRIS WINDLEY 6/16/2009		
UNLESS OTHERWISE SPECIFIED, DIMENSIONS ARE IN INCHES. TOLERANCES ARE: FRACTIONS DECIMALS ANGLES +/- 1/64 .XX - .05 +/- 1° .XXX - .005	APPROVED W WESTHOFF 8/14/1990	SWITCH ASSY, BRASS, WT, 125V, DPDT, SYMBOL 780.4	
SCALE: B		CAGE: 57626	DWG NO: 404-780.4
		REV: D	
SHEET 1 OF 1			

8 7 6 5 4 3 2 1