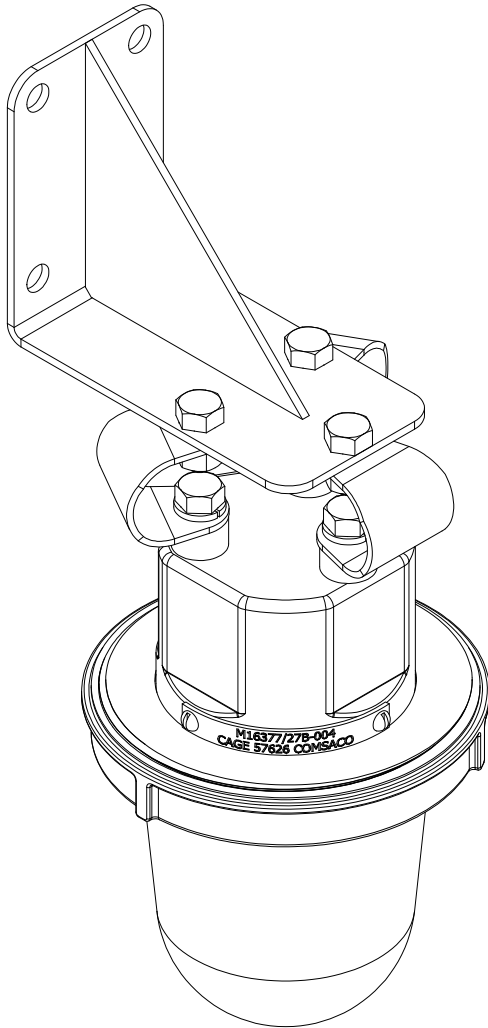


SYMBOL 92.2 / 93.2 / 93.4 / 93.5



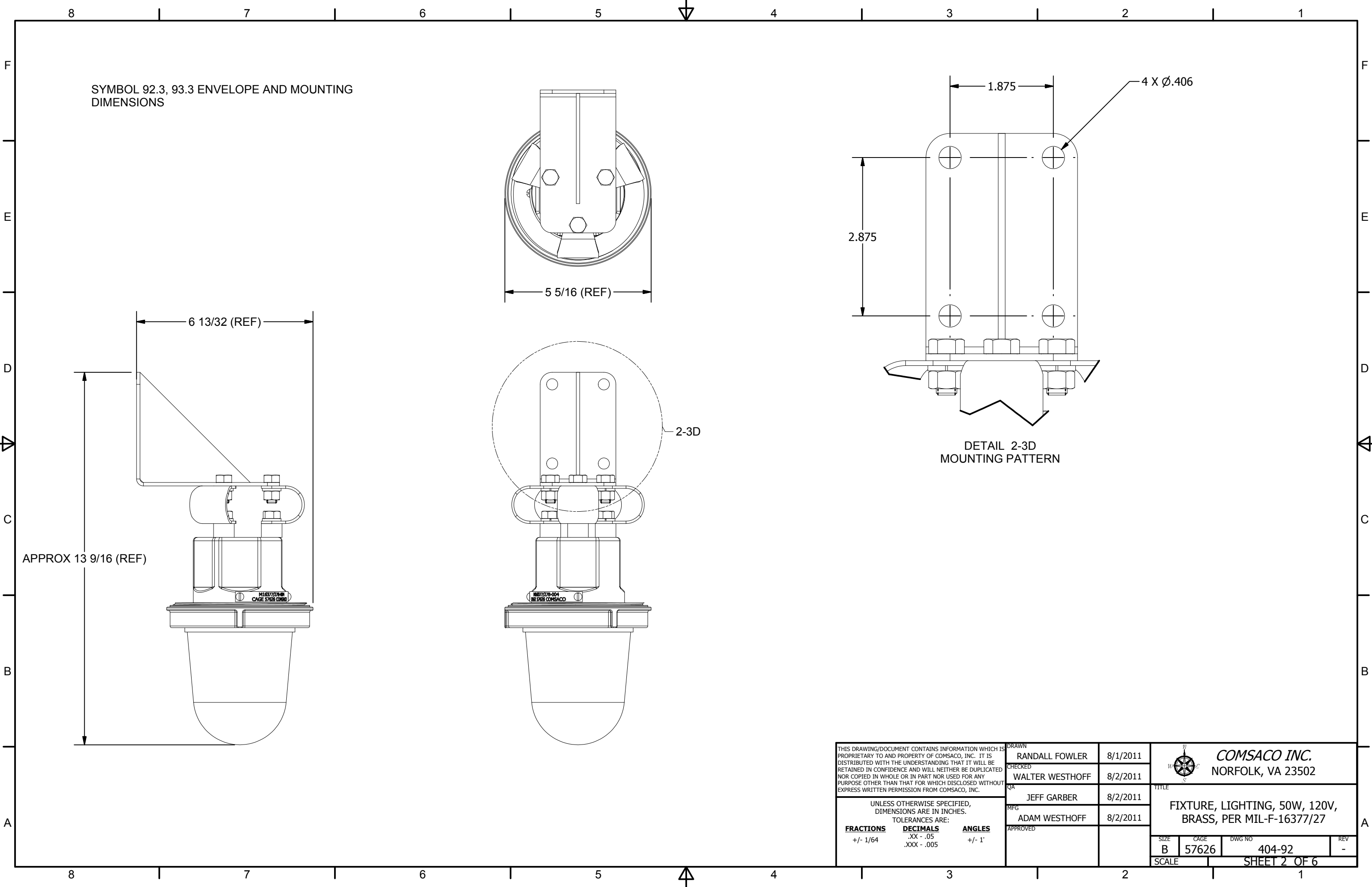
SYMBOL 92.3 / 93.3


NOTES:

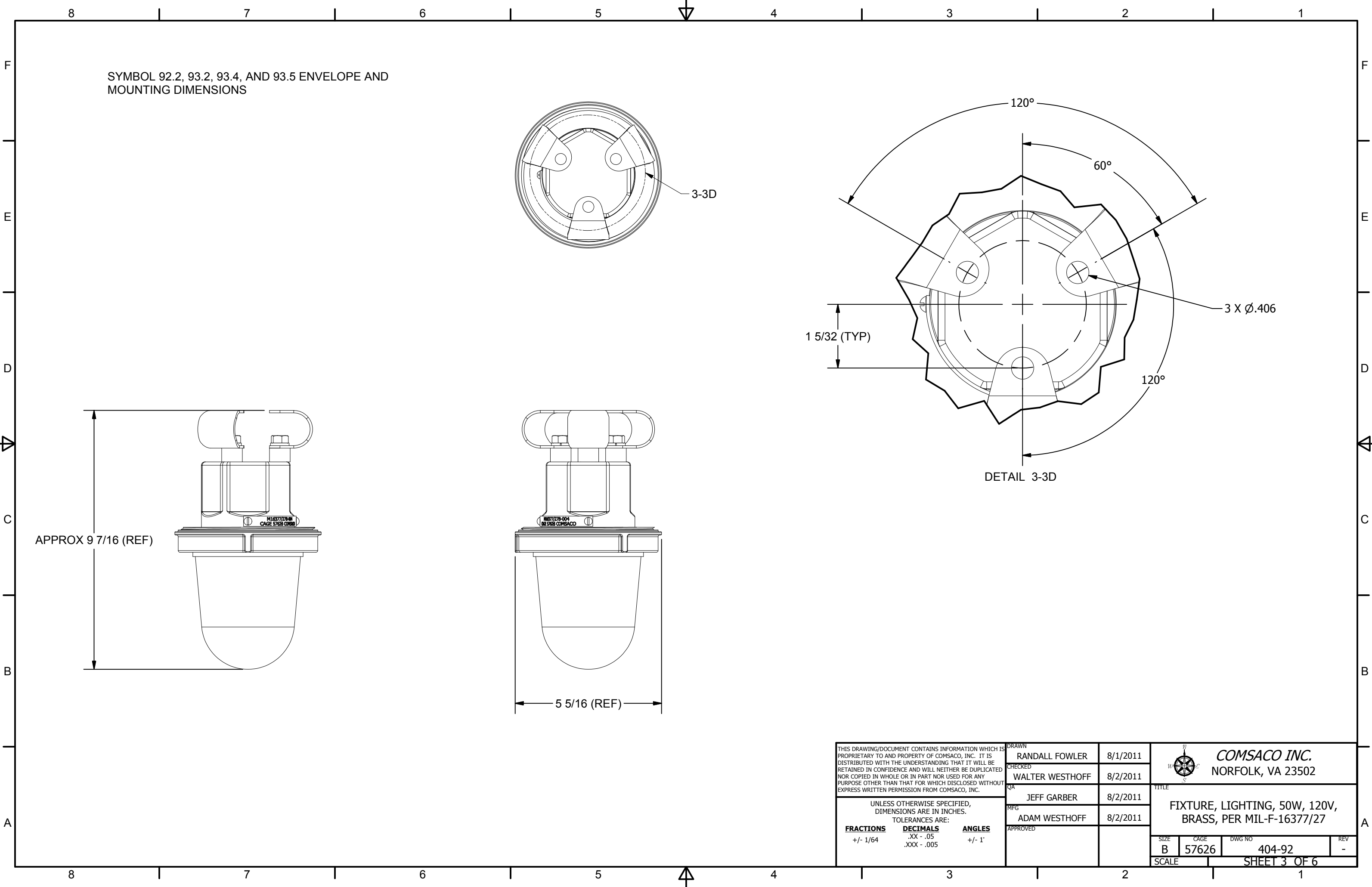
- THIS DRAWING DEVELOPED FROM MIL-F-16377/27B AND MIL-DTL-16377H, TYPE II, CLASS 2 WITH DEVIATIONS AS FOLLOWS:
 - BASED UPON RESULTS OF SHOCK TESTING, SHOCK MOUNTS (ITEM 12, SHEET 4) HAVE INCREASED FROM 0.064" THICK TO 0.090" THICK AS ALLOWED BY MIL-DTL-16377H, PARAGRAPH 3.5.16
 - BASED UPON RESULTS OF SHOCK TESTING, AND FOLLOWING GOOD MANUFACTURING PRACTICE, SHOCK MOUNT FASTENERS (ITEM 14, SHEET 4) HAVE BEEN CHANGED FROM BRASS ROUND HEAD MACHINE SCREWS (WITHOUT LOCK WASHERS) TO 316 STAINLESS STEEL HEX HEAD BOLTS AND SPLIT LOCK WASHERS. THIS FACILITATES ACCURATE TIGHTENING OF THE FASTENERS WITHOUT REQUIRING DISASSEMBLY OF THE FIXTURE WHEN USED WITH THE BULKHEAD MOUNTING BRACKET.
- SHOCK REQUIREMENT PER MIL-DTL-16377H, PARAGRAPH 3.5.12.2:
 - HI-SHOCK, GRADE A, PER MIL-S-901.
- VIBRATION REQUIREMENT PER MIL-DTL-16377H, PARAGRAPH 3.5.13:
 - TYPE 1 VIBRATION PER MIL-DTL-167-1.
- DEGREE OF ENCLOSURE PER MIL-F-16377/27B:
 - WATERTIGHT PER MIL-STD-108.
- FINISH: WHITE ENAMEL ON ENCLOSURE EXTERIOR AND INTERIOR.

SYMBOL 9X.X PART NUMBER MATRIX							
SYM 92.2	SYM 93.2	SYM 92.3	SYM 93.3	SYM 93.4	SYM 93.5	PART NUMBER	DESCRIPTION
1	-	1	-	-	-	M16377-27-001	WHITE (CLEAR TRANSPARENT DIFFUSING) GLOBE
-	1	-	1	-	-	M16377-27-002	RED (TRANSPARENT DIFFUSING) GLOBE
-	-	1	1	-	-	M16377-27-003	BULKHEAD MOUNTING BRACKET (SEE SHEET 6)
1	1	1	1	1	1	M16377-27-004	BODY (COMPLETE, LESS GLOBE AND MOUNTING BRACKET) (SEE SHEET 4)
-	-	-	-	1	-	M16377-27-006	BLUE (TRANSPARENT DIFFUSING) GLOBE
-	-	-	-	-	1	M16377-27-007	YELLOW (TRANSPARENT DIFFUSING) GLOBE

THIS DRAWING/DOCUMENT CONTAINS INFORMATION WHICH IS PROPRIETARY TO AND PROPERTY OF COMSACO, INC. IT IS DISTRIBUTED WITH THE UNDERSTANDING THAT IT WILL BE RETAINED IN CONFIDENCE AND WILL NEITHER BE DUPLICATED NOR COPIED IN WHOLE OR IN PART NOR USED FOR ANY PURPOSE OTHER THAN THAT FOR WHICH DISCLOSED WITHOUT EXPRESS WRITTEN PERMISSION FROM COMSACO, INC.	DRAWN		8/1/2011		 COMSACO INC. NORFOLK, VA 23502		
	CHECKED		8/2/2011				
	QA		8/2/2011				
	MFG		8/2/2011				
UNLESS OTHERWISE SPECIFIED, DIMENSIONS ARE IN INCHES. TOLERANCES ARE: FRACTIONS DECIMALS ANGLES +/- 1/64 .XX - .05 +/- 1' .XXX - .005	APPROVED				TITLE FIXTURE, LIGHTING, 50W, 120V, BRASS, PER MIL-F-16377/27		
	SIZE		CAGE			DWG NO	REV
	B		57626			404-92	-
SCALE		SHEET 1 OF 6					



THIS DRAWING/DOCUMENT CONTAINS INFORMATION WHICH IS PROPRIETARY TO AND PROPERTY OF COMSACO, INC. IT IS DISTRIBUTED WITH THE UNDERSTANDING THAT IT WILL BE RETAINED IN CONFIDENCE AND WILL NEITHER BE DUPLICATED NOR COPIED IN WHOLE OR IN PART NOR USED FOR ANY PURPOSE OTHER THAN THAT FOR WHICH DISCLOSED WITHOUT EXPRESS WRITTEN PERMISSION FROM COMSACO, INC.			DRAWN RANDALL FOWLER		8/1/2011	 COMSACO INC. NORFOLK, VA 23502	
			CHECKED WALTER WESTHOFF		8/2/2011		
			QA JEFF GARBER		8/2/2011	TITLE FIXTURE, LIGHTING, 50W, 120V, BRASS, PER MIL-F-16377/27	
			MFG ADAM WESTHOFF		8/2/2011		
UNLESS OTHERWISE SPECIFIED, DIMENSIONS ARE IN INCHES. TOLERANCES ARE: FRACTIONS DECIMALS ANGLES +/- 1/64 .XX - .05 +/- 1' .XXX - .005			APPROVED			SIZE B	CAGE 57626
						DWG NO 404-92	REV -
			SCALE			SHEET 2 OF 6	



SYMBOL 92.2, 93.2, 93.4, AND 93.5 ENVELOPE AND MOUNTING DIMENSIONS


APPROX 9 7/16 (REF)

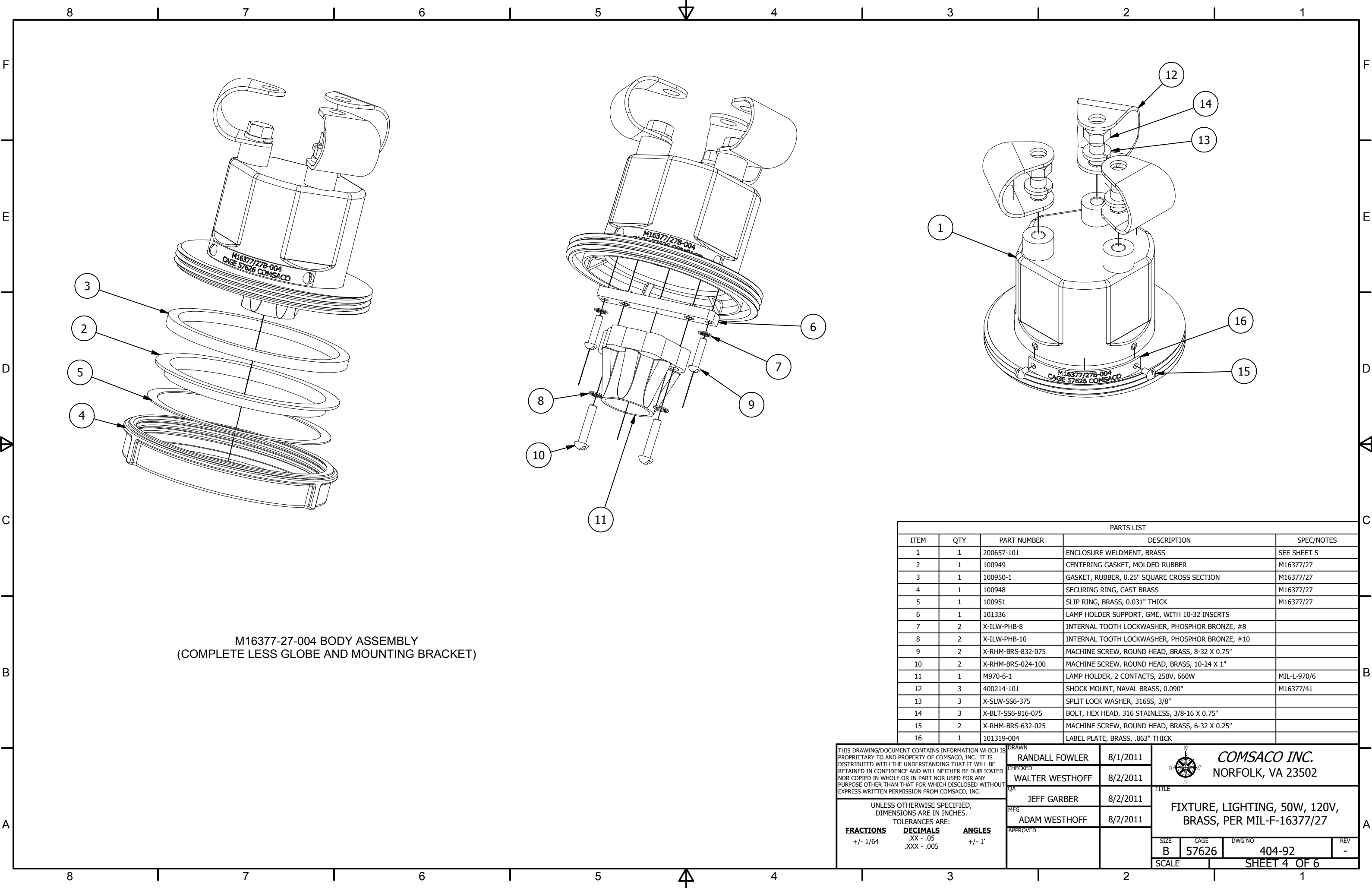
5 5/16 (REF)

1 5/32 (TYP)

DETAIL 3-3D

3 X Ø.406

THIS DRAWING/DOCUMENT CONTAINS INFORMATION WHICH IS PROPRIETARY TO AND PROPERTY OF COMSACO, INC. IT IS DISTRIBUTED WITH THE UNDERSTANDING THAT IT WILL BE RETAINED IN CONFIDENCE AND WILL NEITHER BE DUPLICATED NOR COPIED IN WHOLE OR IN PART NOR USED FOR ANY PURPOSE OTHER THAN THAT FOR WHICH DISCLOSED WITHOUT EXPRESS WRITTEN PERMISSION FROM COMSACO, INC.	DRAWN RANDALL FOWLER	8/1/2011	 COMSACO INC. NORFOLK, VA 23502
	CHECKED WALTER WESTHOFF	8/2/2011	
	QA JEFF GARBER	8/2/2011	
	MFG ADAM WESTHOFF	8/2/2011	
UNLESS OTHERWISE SPECIFIED, DIMENSIONS ARE IN INCHES. TOLERANCES ARE: FRACTIONS +/- 1/64 DECIMALS .XX - .05 .XXX - .005 ANGLES +/- 1°	APPROVED		TITLE FIXTURE, LIGHTING, 50W, 120V, BRASS, PER MIL-F-16377/27
	SIZE B	CAGE 57626	DWG NO 404-92
	SCALE SHEET 3 OF 6		
		REV -	



M16377-27-004 BODY ASSEMBLY
(COMPLETE LESS GLOBE AND MOUNTING BRACKET)


PARTS LIST				
ITEM	QTY	PART NUMBER	DESCRIPTION	SPEC/NOTES
1	1	200657-101	ENCLOSURE WELDMENT, BRASS	SEE SHEET 5
2	1	100949	CENTERING GASKET, MOLDED RUBBER	M16377/27
3	1	100950-1	GASKET, RUBBER, 0.25" SQUARE CROSS SECTION	M16377/27
4	1	100948	SECURING RING, CAST BRASS	M16377/27
5	1	100951	SLIP RING, BRASS, 0.031" THICK	M16377/27
6	1	101336	LAMP HOLDER SUPPORT, GME, WITH 10-32 INSERTS	
7	2	X-ILW-PHB-8	INTERNAL TOOTH LOCKWASHER, PHOSPHOR BRONZE, #8	
8	2	X-ILW-PHB-10	INTERNAL TOOTH LOCKWASHER, PHOSPHOR BRONZE, #10	
9	2	X-RHM-BRS-832-075	MACHINE SCREW, ROUND HEAD, BRASS, 8-32 X 0.75"	
10	2	X-RHM-BRS-024-100	MACHINE SCREW, ROUND HEAD, BRASS, 10-24 X 1"	
11	1	M970-6-1	LAMP HOLDER, 2 CONTACTS, 250V, 660W	MIL-L-970/6
12	3	400214-101	SHOCK MOUNT, NAVAL BRASS, 0.090"	M16377/41
13	3	X-SLW-SS6-375	SPLIT LOCK WASHER, 316SS, 3/8"	
14	3	X-BLT-SS6-816-075	BOLT, HEX HEAD, 316 STAINLESS, 3/8-16 X 0.75"	
15	2	X-RHM-BRS-632-025	MACHINE SCREW, ROUND HEAD, BRASS, 6-32 X 0.25"	
16	1	101319-004	LABEL PLATE, BRASS, .063" THICK	

THIS DRAWING/DOCUMENT CONTAINS INFORMATION WHICH IS PROPRIETARY TO AND PROPERTY OF COMSACO, INC. IT IS DISTRIBUTED WITH THE UNDERSTANDING THAT IT WILL BE RETAINED IN CONFIDENCE AND WILL NEITHER BE DUPLICATED NOR COPIED IN WHOLE OR IN PART NOR USED FOR ANY PURPOSE OTHER THAN THAT FOR WHICH DISCLOSED WITHOUT EXPRESS WRITTEN PERMISSION FROM COMSACO, INC.

UNLESS OTHERWISE SPECIFIED, DIMENSIONS ARE IN INCHES. TOLERANCES ARE:

FRACTIONS	DECIMALS	ANGLES
+/- 1/64	.XX - .05 .XXX - .005	+/- 1°

DRAWN	RANDALL FOWLER	8/1/2011
CHECKED	WALTER WESTHOFF	8/2/2011
QA	JEFF GARBER	8/2/2011
MFG	ADAM WESTHOFF	8/2/2011
APPROVED		



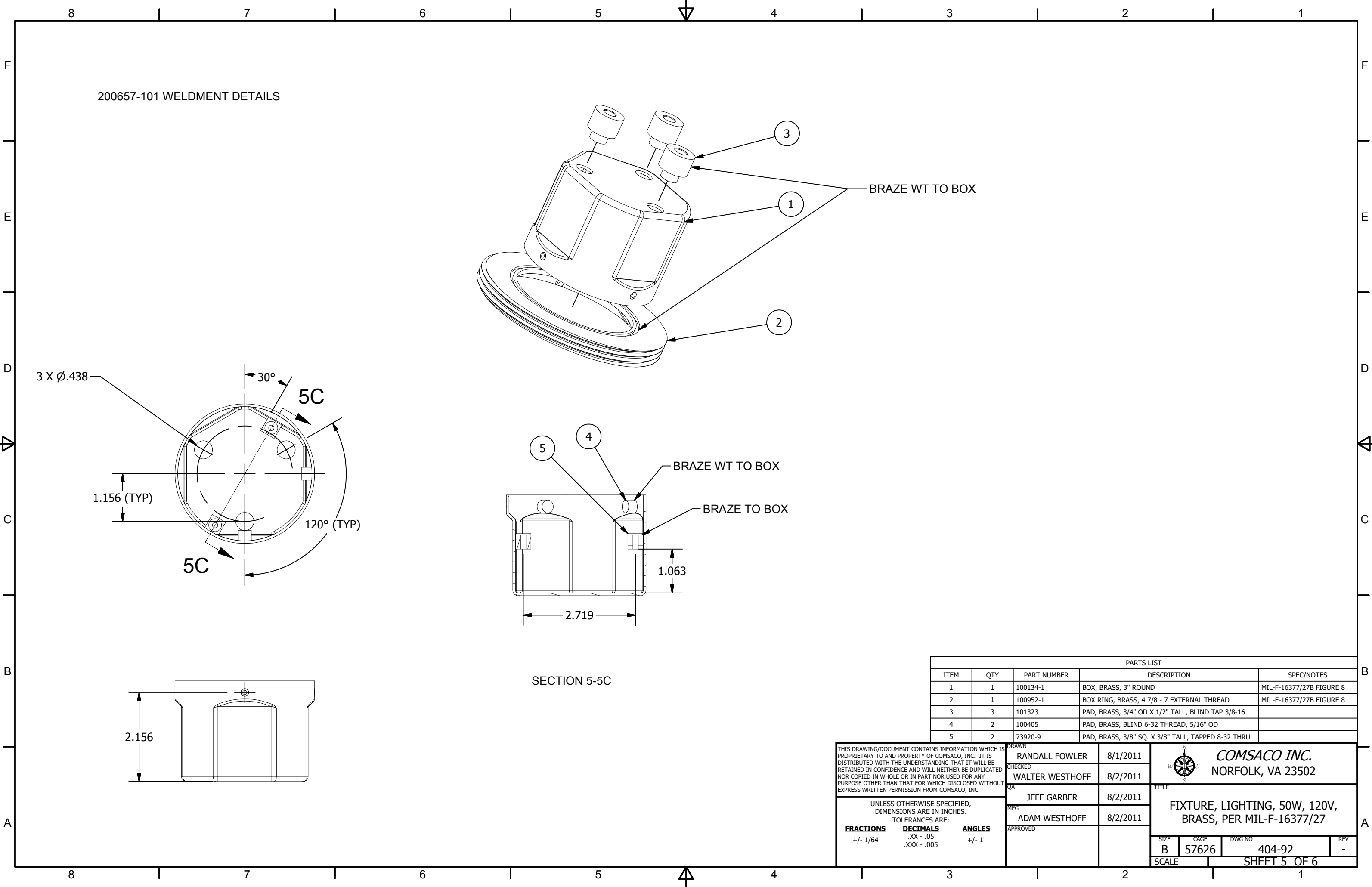
COMSACO INC.
NORFOLK, VA 23502

TITLE


**FIXTURE, LIGHTING, 50W, 120V,
BRASS, PER MIL-F-16377/27**

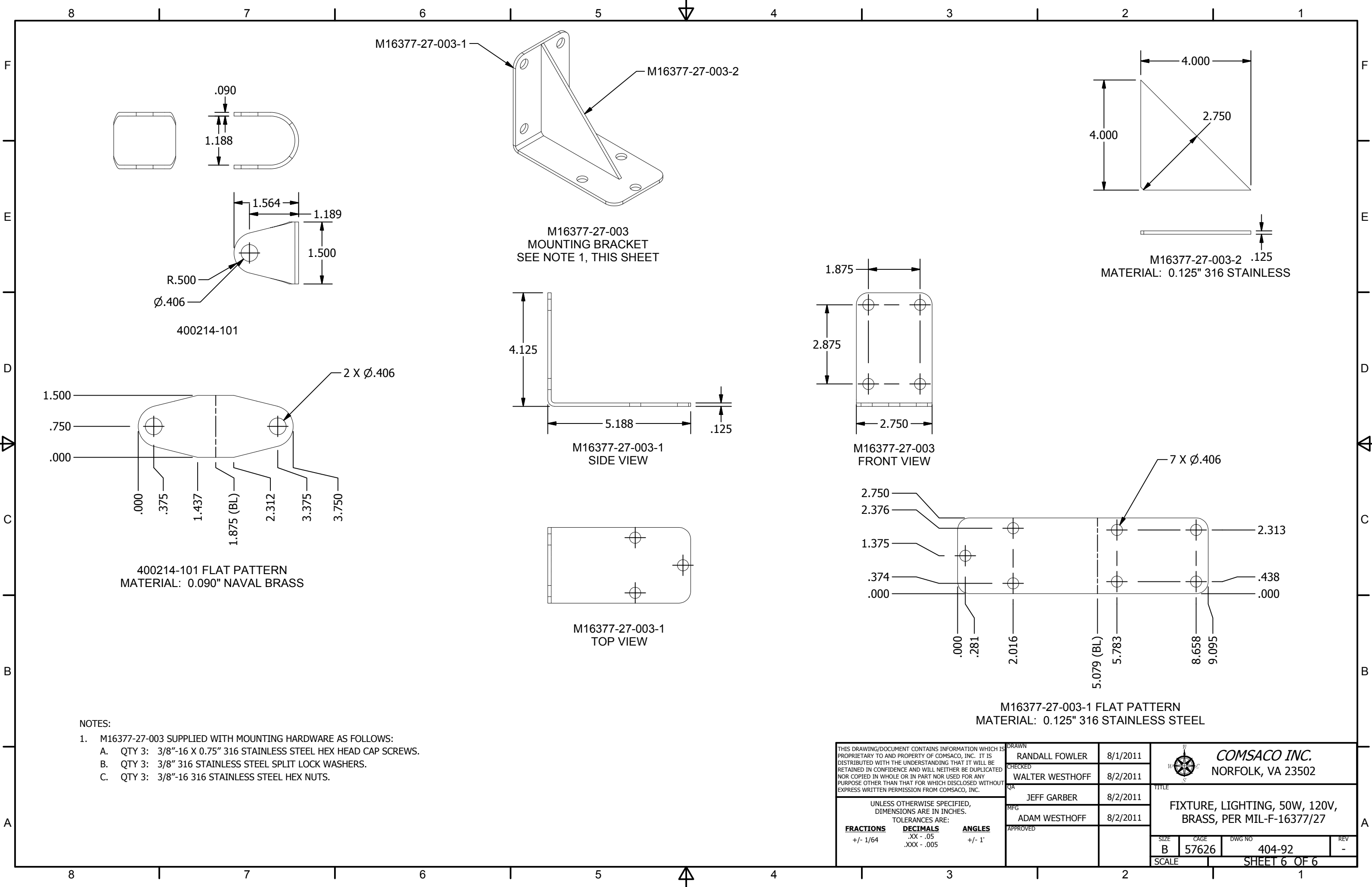
SIZE	CAGE	DWG NO	REV
B	57626	404-92	-

SCALE SHEET 4 OF 6




PARTS LIST				
ITEM	QTY	PART NUMBER	DESCRIPTION	SPEC/NOTES
1	1	100134-1	BOX, BRASS, 3" ROUND	MIL-F-16377/27B FIGURE 8
2	1	100952-1	BOX RING, BRASS, 4 7/8 - 7 EXTERNAL THREAD	MIL-F-16377/27B FIGURE 8
3	3	101323	PAD, BRASS, 3/4" OD X 1/2" TALL, BLIND TAP 3/8-16	
4	2	100405	PAD, BRASS, BLIND 6-32 THREAD, 5/16" OD	
5	2	73920-9	PAD, BRASS, 3/8" SQ. X 3/8" TALL, TAPPED 8-32 THRU	

THIS DRAWING/DOCUMENT CONTAINS INFORMATION WHICH IS PROPRIETARY TO AND PROPERTY OF COMSACO, INC. IT IS DISTRIBUTED WITH THE UNDERSTANDING THAT IT WILL BE RETAINED IN CONFIDENCE AND WILL NEITHER BE DUPLICATED NOR COPIED IN WHOLE OR IN PART NOR USED FOR ANY PURPOSE OTHER THAN THAT FOR WHICH DISCLOSED WITHOUT EXPRESS WRITTEN PERMISSION FROM COMSACO, INC.		DRAWN RANDALL FOWLER	8/1/2011	<div>COMSACO INC. NORFOLK, VA 23502</div>	
		CHECKED WALTER WESTHOFF	8/2/2011		
		QA JEFF GARBER	8/2/2011	TITLE FIXTURE, LIGHTING, 50W, 120V, BRASS, PER MIL-F-16377/27	
		MFG ADAM WESTHOFF	8/2/2011		
UNLESS OTHERWISE SPECIFIED, DIMENSIONS ARE IN INCHES. TOLERANCES ARE: FRACTIONS DECIMALS ANGLES +/- 1/64 .XX - .05 +/- 1° .XXX - .005		APPROVED		SIZE B	CAGE 57626
				DWG NO 404-92	REV -
		SCALE		SHEET 5 OF 6	



- NOTES:
- M16377-27-003 SUPPLIED WITH MOUNTING HARDWARE AS FOLLOWS:
 - QTY 3: 3/8"-16 X 0.75" 316 STAINLESS STEEL HEX HEAD CAP SCREWS.
 - QTY 3: 3/8" 316 STAINLESS STEEL SPLIT LOCK WASHERS.
 - QTY 3: 3/8"-16 316 STAINLESS STEEL HEX NUTS.

THIS DRAWING/DOCUMENT CONTAINS INFORMATION WHICH IS PROPRIETARY TO AND PROPERTY OF COMSACO, INC. IT IS DISTRIBUTED WITH THE UNDERSTANDING THAT IT WILL BE RETAINED IN CONFIDENCE AND WILL NEITHER BE DUPLICATED NOR COPIED IN WHOLE OR IN PART NOR USED FOR ANY PURPOSE OTHER THAN THAT FOR WHICH DISCLOSED WITHOUT EXPRESS WRITTEN PERMISSION FROM COMSACO, INC.	DRAWN RANDALL FOWLER	8/1/2011	<div>COMSACO INC. NORFOLK, VA 23502</div>			
	CHECKED WALTER WESTHOFF	8/2/2011				
	QA JEFF GARBER	8/2/2011	TITLE FIXTURE, LIGHTING, 50W, 120V, BRASS, PER MIL-F-16377/27			
	MFG ADAM WESTHOFF	8/2/2011				
UNLESS OTHERWISE SPECIFIED, DIMENSIONS ARE IN INCHES. TOLERANCES ARE: FRACTIONS +/- 1/64 DECIMALS .XX - .05 .XXX - .005 ANGLES +/- 1°	APPROVED					
	SIZE B	CAGE 57626	DWG NO 404-92	REV -	SCALE SHEET 6 OF 6	