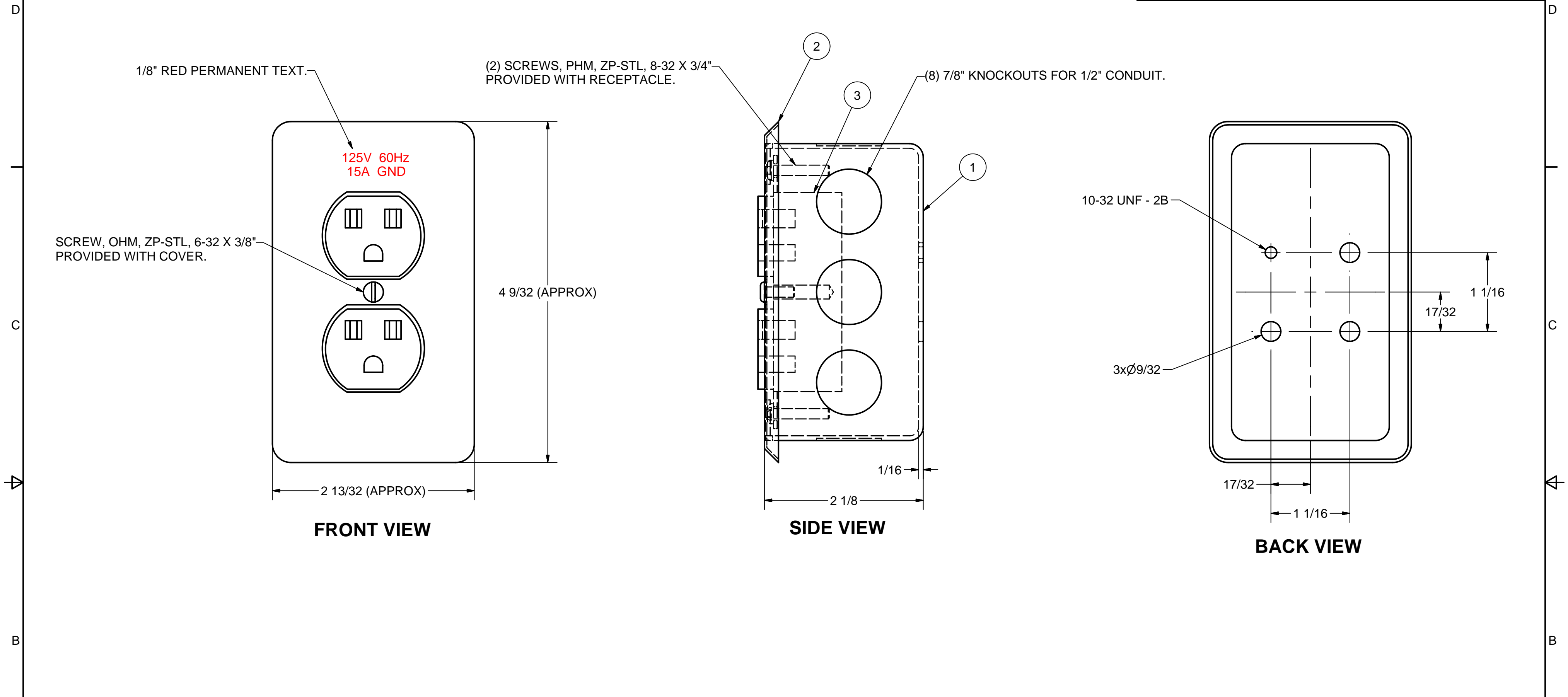


REVISIONS			
REV	DESCRIPTION	DATE	AUTH
A	ADDED: NOTE 5. REVISED: DWG INTO CAD FORMAT.	2/20/08	WW
B	CHANGED: ITEM 1 WAS 4170-103. REVISED: WERE (11) KNOCKOUTS. AUTH: MFR REQ.	2/2/10	AW



- NOTES:
- DEVELOPED FROM NAVSEA DWG 803-5184170, METHOD G-7-G, SYMBOL 730.1, AND MIL-R-2726/66.
  - ALL STEEL PARTS TO BE ZINC PLATED.
  - BOX TO BE FABRICATED BY FORMING, WELDED CONSTRUCTION NOT ACCEPTABLE.
  - GROUND CONTACT AND MOUNTING STRAP, PC 3, SHALL BE NICKEL PLATED .0003 INCH THICK.
  - APPROVED FOR GRADE "A" SHOCK PER MIL-S-901C BY SUPSHIPS BATH LTR 9072 SER 254/2799 DATED 06JAN1989 ON THE BASIS OF LIGHT WEIGHT SHOCK TEST USING FIXTURE 4A, FOR GRADE A, CLASS I EQUIPMENT.

Parts List			
ITEM	QTY	PART NUMBER	DESCRIPTION
1	1	300184	BOX, ZP-STL, 2X4
2	1	300122-1	COVER, ZP-STL, 2X4
3	1	5262CR-B	RECEPTACLE, 125V, 15A, BROWN FACE, CORROSION RESISTANT

THIS DRAWING/DOCUMENT CONTAINS INFORMATION WHICH IS PROPRIETARY TO AND PROPERTY OF COMSACO, INC. IT IS DISTRIBUTED WITH THE UNDERSTANDING THAT IT WILL BE RETAINED IN CONFIDENCE AND WILL NEITHER BE DUPLICATED NOR COPIED IN WHOLE OR IN PART NOR USED FOR ANY PURPOSE OTHER THAN THAT FOR WHICH DISCLOSED WITHOUT EXPRESS WRITTEN PERMISSION FROM COMSACO, INC.

UNLESS OTHERWISE SPECIFIED DIMENSIONS ARE IN INCHES TOLERANCES ARE:  
FRACTIONS DECIMALS ANGLES  
+/- 1/64 .XX .XXX .005

REDRAWN CHRIS WINDLEY ORIGINAL W WESTHOFF	2/20/2008 8/20/1987
QA	
MFG	
APPROVED	

**COMSACO, INC.**  
NORFOLK, VA. 23502

TITLE  
**DUPLEX RECEPTACLE, TE,  
125V, 15A, SYM 730.1**

SIZE C	CODE IDENT NO. 57626	DWG NO. 404-730.1	REV B
-----------	-------------------------	----------------------	----------

SCALE

SHEET 1 OF 1

NEXT ASSY	USED ON