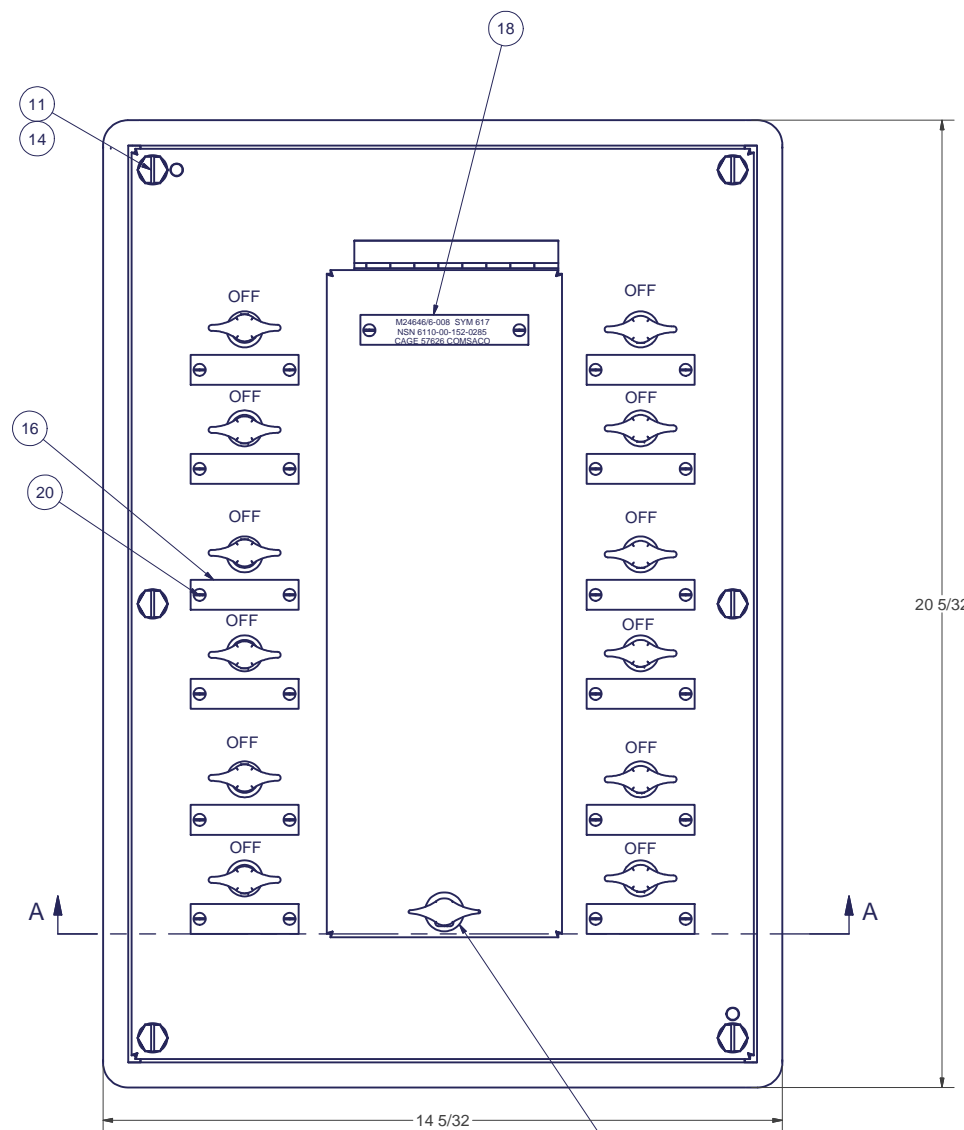


REV		DESCRIPTION	DATE	AUTH
—	A	ADDED: -101, -102 & -103 TO P/L. APPLICATION BLOCK. ITEMS 30-34. CHANGED: ITEM 17, 23 & 25 MAT'L WAS STEEL. NOTE 1. P/N AND MAT'L FOR ITEM 4, P/N FOR ITEM 14.	8/21/01	WW
2B	B	CHANGED: ITEM 10 WAS 4759-9, QTY 12. DELETED: ITEM 11. DETAIL "A" NAMEPLATE. REVISED: DWG INTO CAD FORMAT. ECO: 1251, 1253.	6/18/03	WW
1B 5A	C	REVISED: ITEM 19 WAS CRES, IN NOTE 1 & 3 MIL-F-24646/6 AND MIL-F-24646 WERE REV -. AUTH: DWG ERROR	7/22/03	AW
6A 1B 5A	D	ADDED: NOTE 5. CHANGED: ASSEMBLY -103 TO SYM 617. DELETED: ASSEMBLIES -101 & -102. REVISED: PARTS LIST SEQUENCE TO ALIGN WITH P/E. AUTH: MFR REQUIREMENTS.	11/9/05	WW
1A 1C	E	ADDED: ITEM 29, NOTE 6. CHANGED: ITEM 21 WAS ILW PHOS-BRZ, ITEM 28 QTY WAS 24. AUTH: MFR REQ.	3/1/10	AW

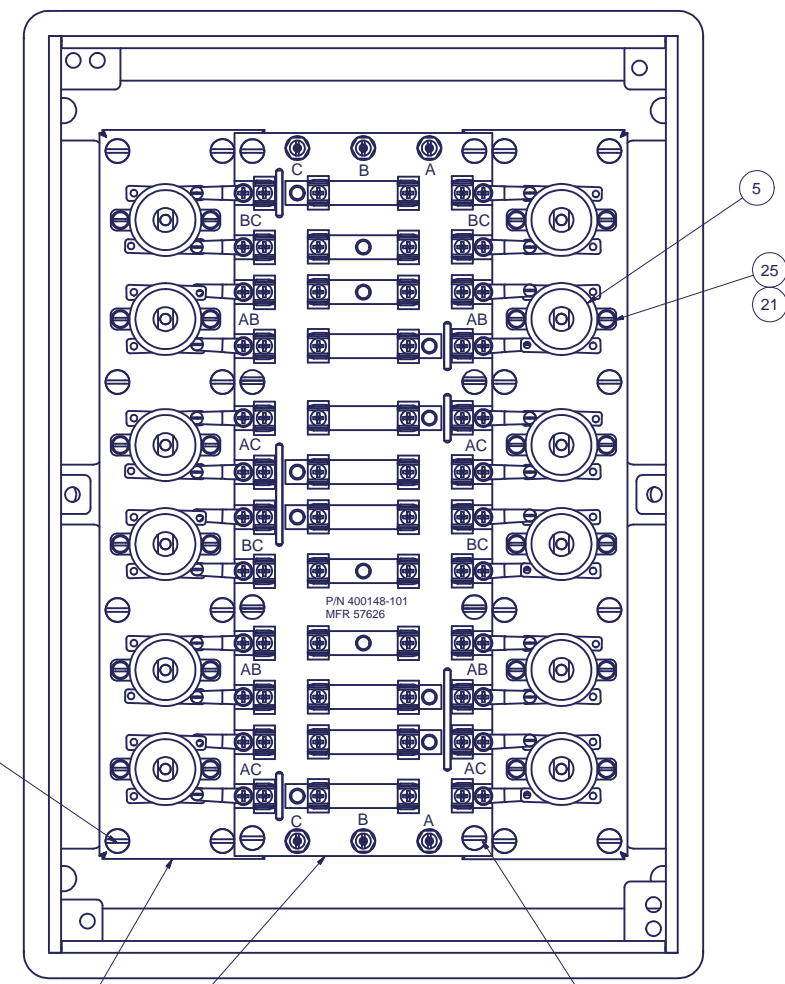
- NOTES:
- THIS DRAWING DEVELOPED FROM MIL-DTL-24646/6A.
 - RATINGS AND SPECIFICATIONS:
12 CIRCUIT, 125VAC, 3 PHASE LINE, 1 PHASE BRANCH, 10 AMPS MAX, SWITCHED.
FEEDER SIZE 14MCM MAX; BRANCH CABLE SIZE 4 MCM MAX.
USES FUSES TYPES F07, F09 OR F10 PER MIL-PRF-15160.
DEGREE OF ENCLOSURE: TE
 - QUALITY CONFORMANCE INSPECTIONS: REF MIL-DTL-24646A PARA. 4.4.
 - ALL STEEL HARDWARE, SHAFTS, YOKES, ETC. SHALL BE ZINC PLATED.
 - WEIGHT IS 30LBS(EST).
 - FINISH: LIGHT GRAY ENAMEL, FORMULA 111.

Parts List				
ITEM	QTY	PART NUMBER	DESCRIPTION	
1	1	200185-101	BOX WELDMENT, STEEL	
2	1	200185-102	COVER WELDMENT, STEEL	
3	2	200185-103	SWITCH SUPPORT WELDMENT, STEEL	
4	1	400148-101	SUBASSY, FUSE BASE, GPO-N3	
5	12	1SR2A4	SWITCH, SNAP, DPST, 10A, 125VAC	
6	12	74000-1	HANDLE, SWITCH, BRASS	
7	12	74031-46	SHAFT, SWITCH ACTUATING, STEEL	
8	12	74000-119	YOKE, SWITCH, ACTUATING, STEEL	
9	12	100531-1	ROLL PIN, CRES, 1/16 X 1/2"	
10	24	100623	TERMINAL CONNECTOR, BRASS	
11	6	74031-5	SCREW, SLOTTED HEX HD, BRASS, 3/8-16	
12	1	100608	STUD, FUSE COVER, BRASS	
13	1	74031-33	WASHER, FUSE COVER, 11/32" ID, BRASS	
14	6	AN960B616	WASHER, FLAT, BRASS, 3/8"ID	
15	1	74031-57	HANDLE, FUSE COVER, BRASS	
16	12	74031-25	NAMEPLATE, BLANK, BRASS	
17	12	AN960C416	WASHER, FLAT, CRES, 1/4"	
18	1	100260-617	ID PLATE, ENGRAVED, BRASS	
19	1	WD-SYM 617	WIRING DIAGRAM, LAMINATED PAPER	
20	26	X-RHM-BRS-632-250	SCREW, RHM, BRASS, 6-32 X 1/4"	
21	48	X-SLW-CRES-8	WASHER, SPLIT-LOCK, CRES, #8	
22	1	X-RHM-BRS-024-375	SCREW, RHM, BRASS, 10-24 X 3/8"	
23	24	X-RHM-SS-832-500	SCREW, RHM, CRES, 8-32 X 1/2"	
24	8	X-RHM-SS-0420-625	SCREW, RHM, CRES, 1/4-20 X 5/8"	
25	24	X-FH-SS-832-313	SCREW, FILLESTER HEAD, CRES, 8-32 X 5/16	
26	16	X-RHM-SS-0420-375	SCREW, RHM, CRES, 1/4-20 X 3/8"	
27	12	X-FH-SS-440-375	SCREW, FILLESTER HEAD, 4-40 X 3/8", CRES	
28	8	X-ILW-CRES-250	WASHER, INT TOOTH, CRES, 1/4"	
29	16	X-ELW-CRES-0250	WASHER, EXT TOOTH, CRES, 1/4"	

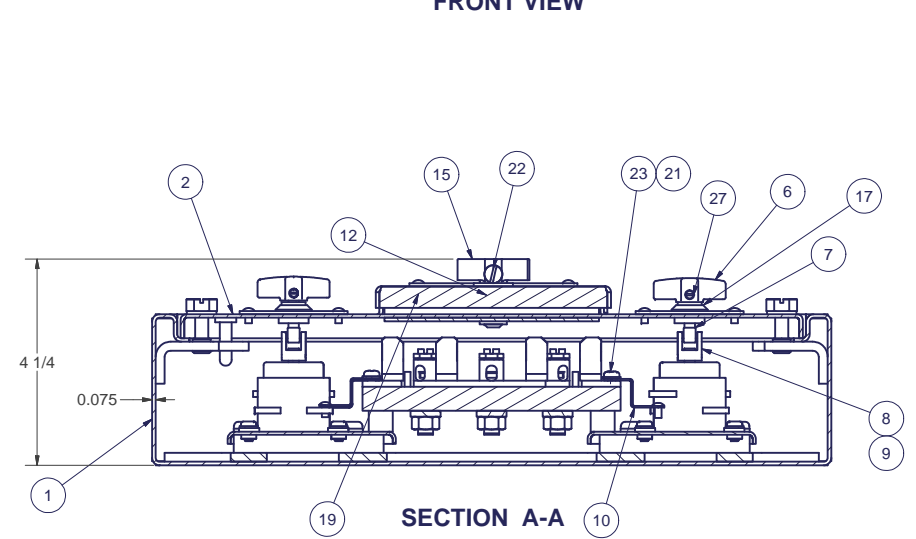
REDRAWN	CHRIS WINDLEY	5/29/2003	COMSACO, INC. NORFOLK, VA. 23502
ORIGINAL	WALTER WESTHOFF	7/21/1999	
QA			
MFG			TITLE
APPROVED			FUSE PANEL, 12 CKT, W/SWS, 3 PHASE, TE, SYM 617
			SIZE
			CODE IDENT NO.
			DWG NO
			REV
			D
			57626
			404-617
			SCALE
			SHEET 1 OF 1



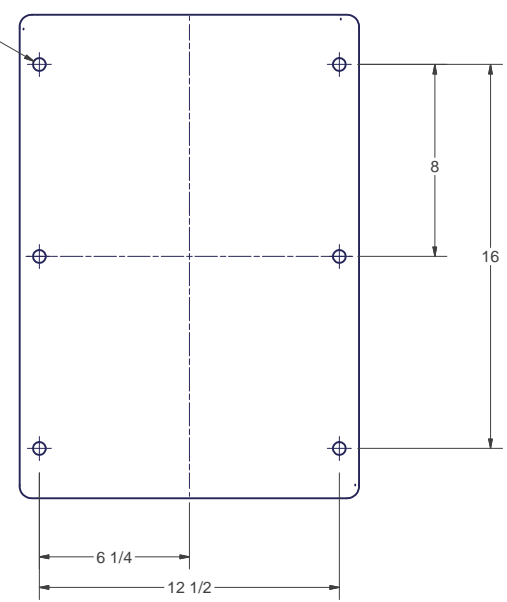
FRONT VIEW



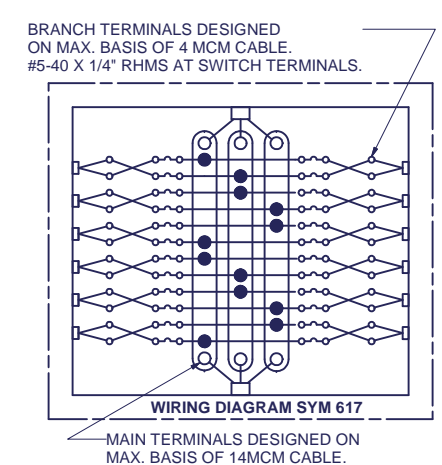
FRONT VIEW LESS COVER



SECTION A-A



BACK VIEW



WIRING DIAGRAM SYM 617

UNLESS OTHERWISE SPECIFIED
DIMENSIONS ARE IN INCHES
TOLERANCES ARE:
FRACTIONS DECIMALS ANGLES
+/- 1/64 .XX .XXX .005

NEXT ASSY USED ON