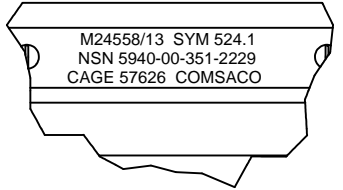
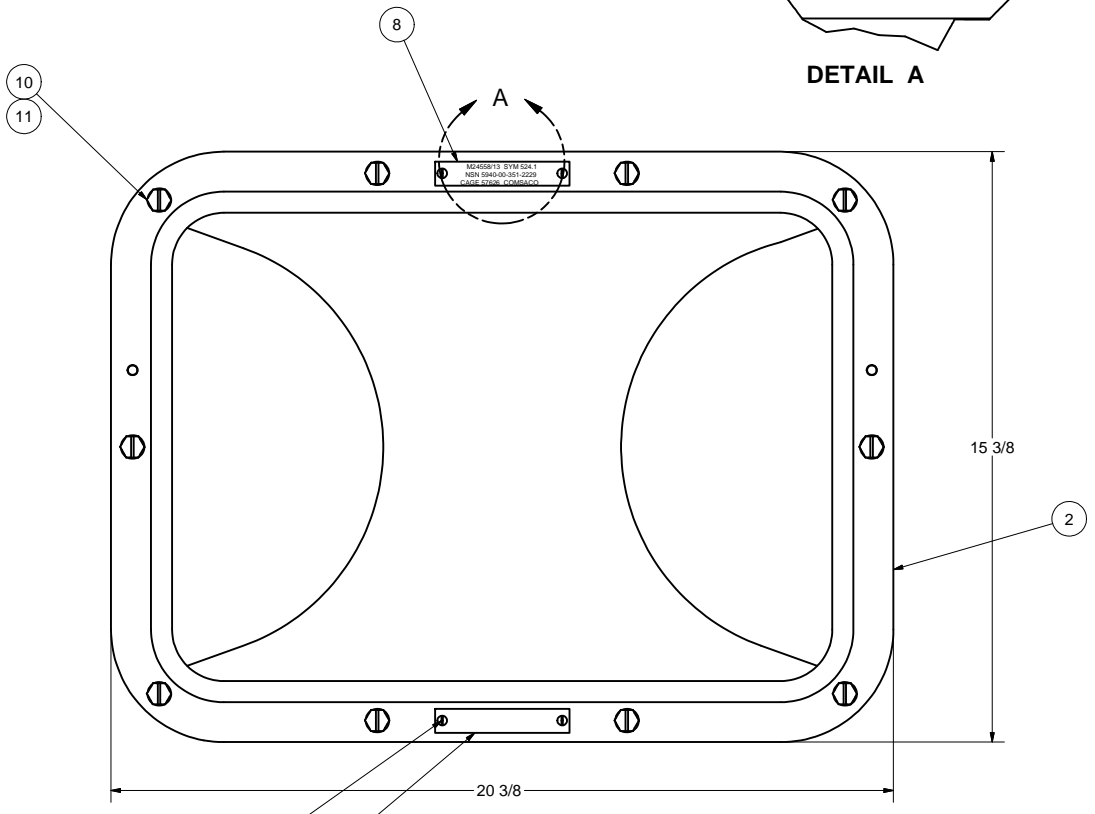


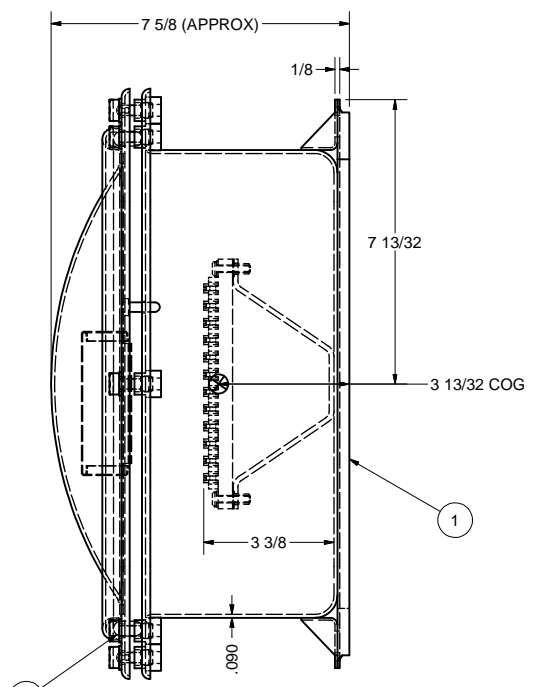
		REVISIONS		
ZONE	REV	DESCRIPTION	DATE	AUTH
6D	A	REVISED: NAMEPLATE, WAS "FSCM 57626 COMSACO MARINE". AUTH: MFR REQUIREMENTS.	9/3/98	WW
ALL	B	REVISED: DWG INTO CAD FORMAT. AUTH: DESIGN REQUIREMENTS.	6/6/05	WW
5A	C	ADDED: TEST DATE TO NOTE 5. CHANGED: TYPE C WAS TYPE A IN NOTE 5B. AUTH: MIL-T-24558.	1/13/11	WW



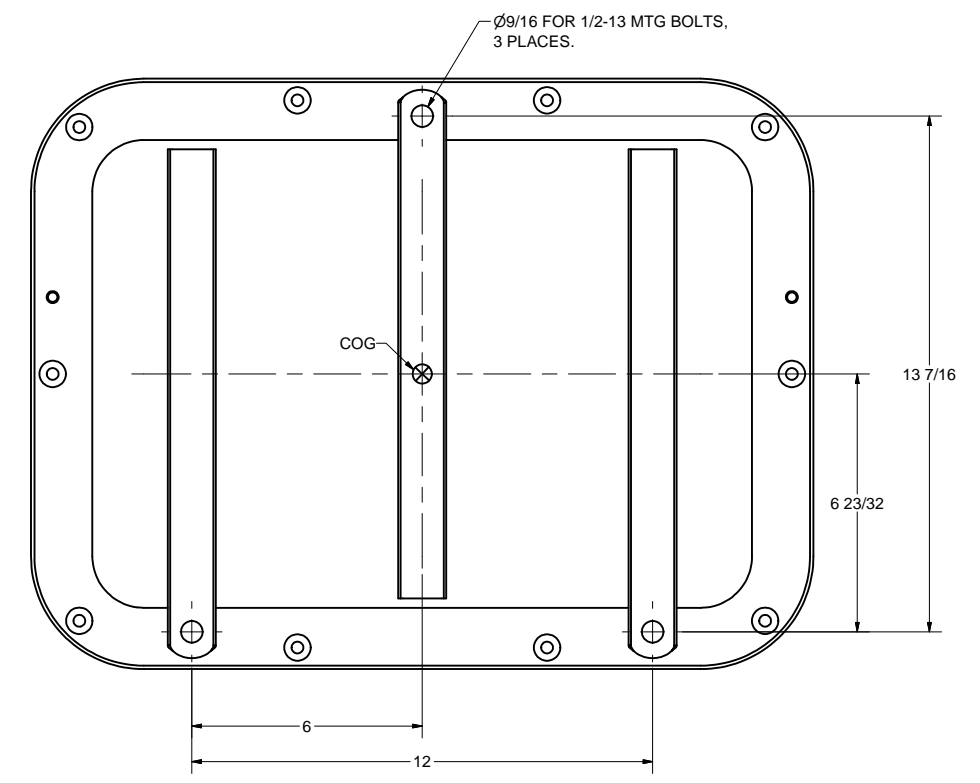
DETAIL A



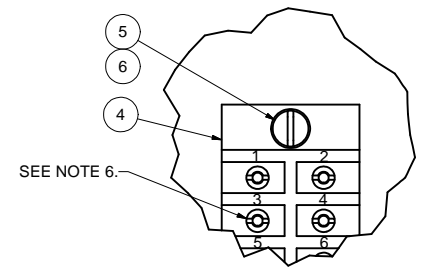
FRONT VIEW



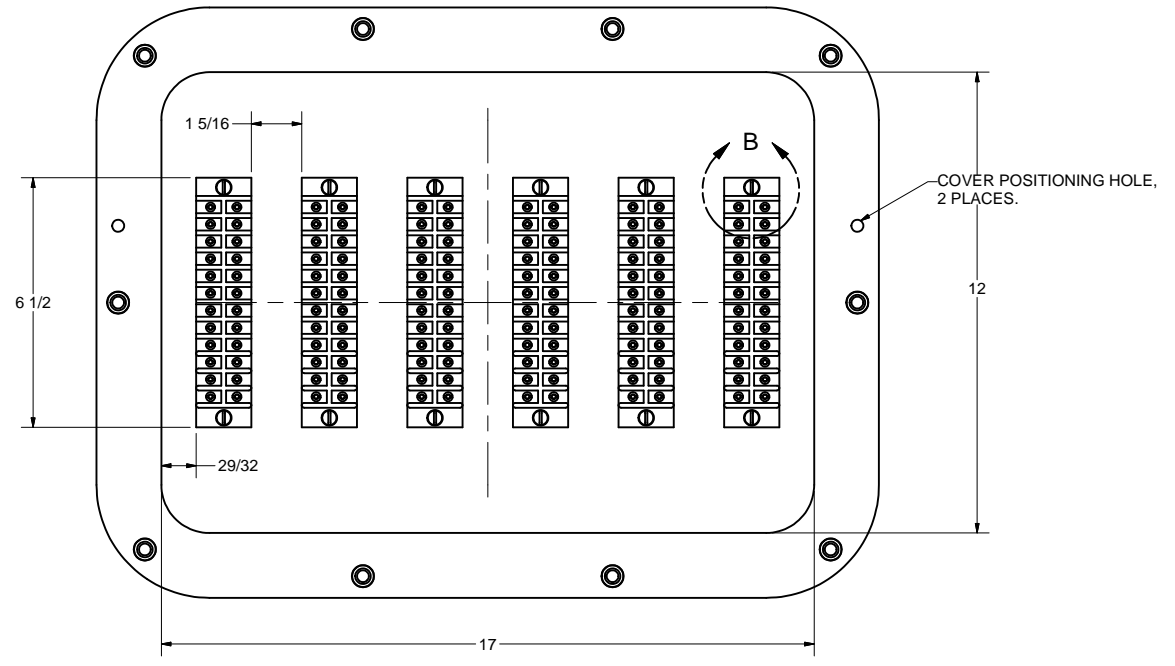
SIDE VIEW



BACK VIEW



DETAIL B



FRONT VIEW LESS COVER

- NOTES:
- THIS DRAWING DEVELOPED FROM MIL-T-24558/13A.
  - RATINGS AND SPECIFICATIONS:
    - A) 600 VOLTS, 30 AMPS MAXIMUM PER STUD OF TERMINAL BOARD.
    - B) 144 TERMINALS, 432 WIRES MAX.
    - C) DEGREE OF ENCLOSURE: SUBMERSIBLE TO 15 FEET (SBM-15) PER MIL-STD-108.
    - D) MAGNETIC PERMEABILITY: LESS THAN 2.0 FERROUS MATERIALS: NONE.
    - E) WEIGHT: 33.5 LBS MAX.
  - UNLESS OTHERWISE SPECIFIED, CABLE ENTRANCE DEVICES WILL BE PROVIDED AND INSTALLED BY THE INSTALLING ACTIVITY.
  - TERMINAL BOARDS ARE MOLDED BARRIER STUD TYPE, CLASS 6TB PER A-A-59125/12, MAXIMUM LUGS PER STUD IS 3. BU-SHIPS TYPE L81. STUDS ARE 6-32.
  - THIS EQUIPMENT TESTED UNDER COMSACO TEST REPORT FA-1099 HAS PASSED FIRST ARTICLE TESTING DATED 18AUG2005, PER MIL-T-24558(SH) PARAGRAPH 4.4. TESTS INCLUDED:
    - A) VIBRATION PER MIL-STD-167 TYPE I. EXPLORATORY AND ENDURANCE UP TO 50HZ.
    - B) SHOCK PER MIL-S-901D: LIGHTWEIGHT HIGH IMPACT, GRADE A.
    - CLASS I, TYPE C, BULKHEAD MOUNTED, BACK MTG PLANE, UNRESTRICTED ORIENTATION.
    - C) EFFECTIVENESS OF ENCLOSURE PER MIL-STD-108. (SBM-15F)
  - BARREL NUTS FOR TERMINAL BOARDS TO BE PACKAGED SECURELY AND SHIPPED LOOSE INSIDE ENCLOSURE.
  - FINISH: INTERIOR ONLY WITH WHITE ENAMEL.

Parts List			
ITEM	QTY	PART NUMBER	DESCRIPTION
1	1	200141	BOX WELDMENT, BRASS, 12 X 17 X 5
2	1	200174-104	COVER WELDMENT, BRASS, DOMED, 12 X 17
3	1	100146-9	GASKET, COVER, RUBBER, MIL-R-6855
4	6	6TB24	TERMINAL BOARD, 30A, 600V, 24T, A-A-59125/12
5	12	X-RHM-BRS-024-875	RHMS, BRASS, 10-24 X 7/8"
6	12	X-ELW-PHB-10	WASHER, EXT TOOTH, PHOS-BRZ, #10
7	1	100260-1	NAMEPLATE, BRASS, BLANK
8	1	100260-524.1	NAMEPLATE, BRASS, ENGRAVED
9	4	X-RHM-BRS-632-250	RHMS, BRASS, 6-32 X 1/4"
10	10	AN960B616	WASHER, FLAT, BRASS, 3/8"
11	10	74031-5	BOLT, COVER, BRASS, 3/8-16 X 1-1/8"

REDRAWN  
CHRIS WINDLEY 6/1/2005  
ORIGINAL  
W WESTHOFF 1/16/1989  
QA  
MFG  
APPROVED

**COMSACO, INC.**  
NORFOLK, VA. 23502

TITLE  
**TERMINAL BOX, BRASS, 144T, SBM-15, SYM 524.1**

SIZE CODE IDENT NO DWG NO REV  
D 57626 404-524.1 C

SCALE SHEET 1 OF 1

UNLESS OTHERWISE SPECIFIED  
DIMENSIONS ARE IN INCHES  
TOLERANCES ARE:  
FRACTIONS DECIMALS ANGLES  
+/- 1/64 .XX .XXX .005

NEXT ASSY USED ON