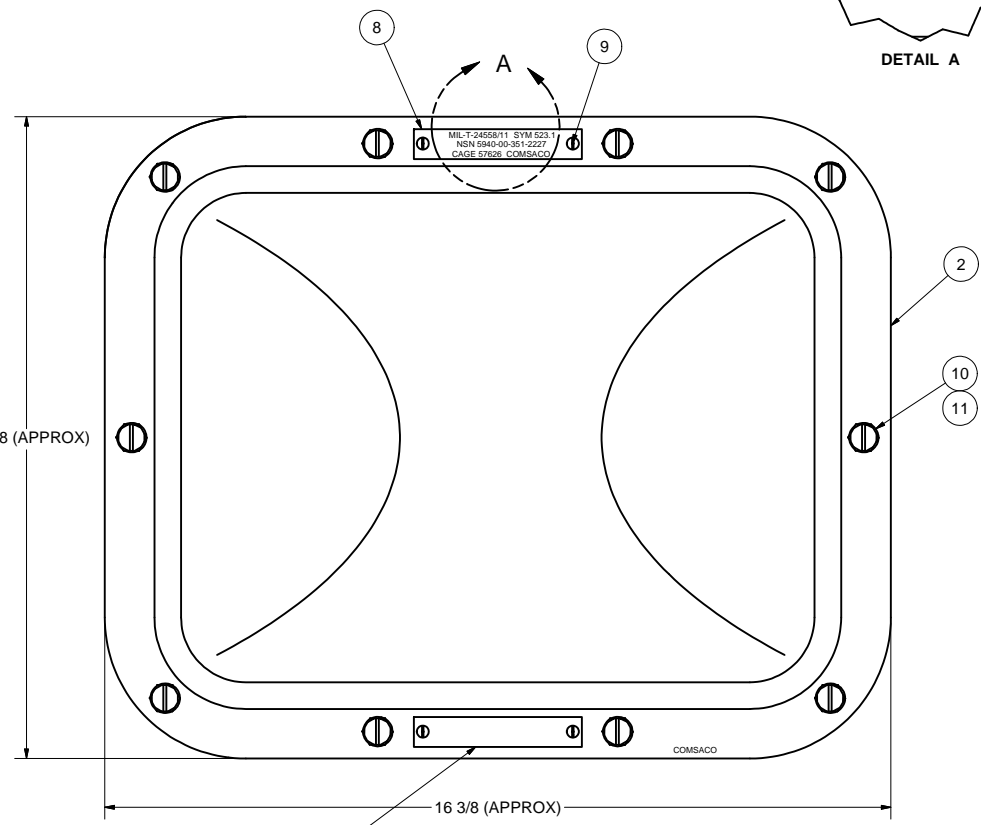


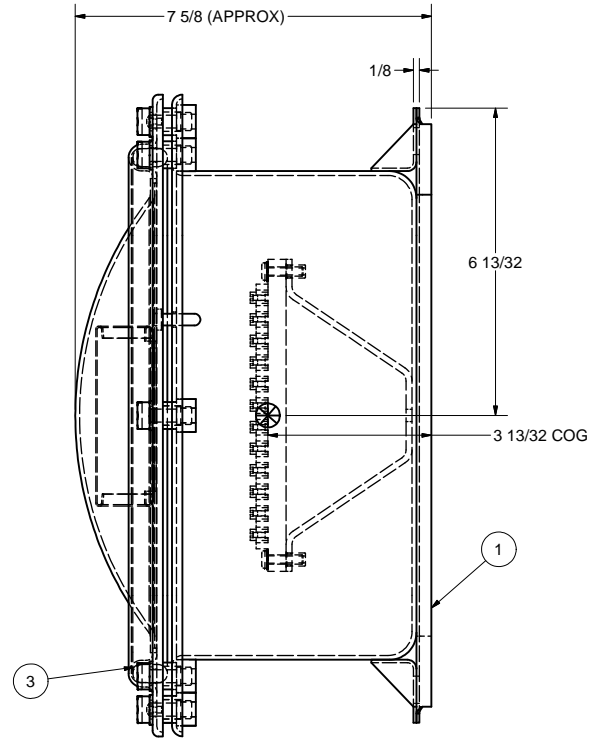
ZONE		REV	REVISIONS	DATE	AUTH
ALL	A		ADDED: ITEM 12. EXTENSION DATA TO NOTE 5. REVISED: DWG INTO CAD FORMAT. AUTH: DESIGN REQUIREMENTS.	10/19/07	AW
2A	B		REVISED: ITEMS 5 & 6 WERE CRES. AUTH: MFR REQ.	5/27/14	AW

MIL-T-24558/11 SYM 523.1
NSN 5940-00-351-2227
CAGE 57626 COMSACO

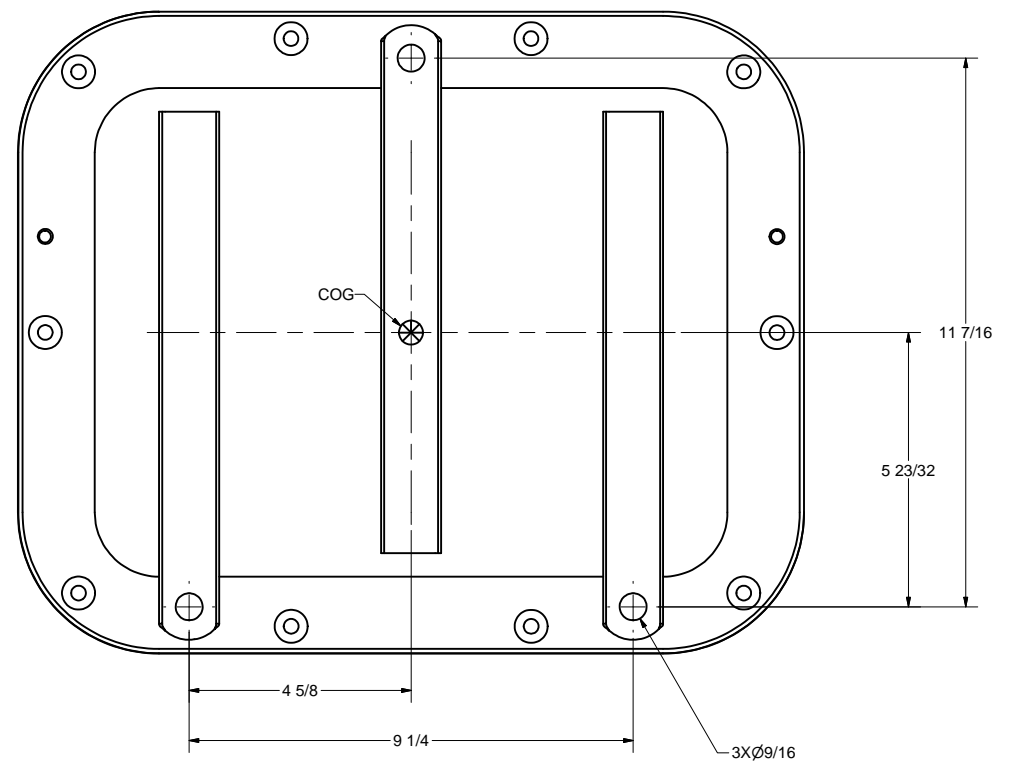
DETAIL A



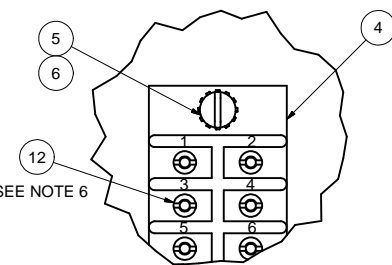
FRONT VIEW



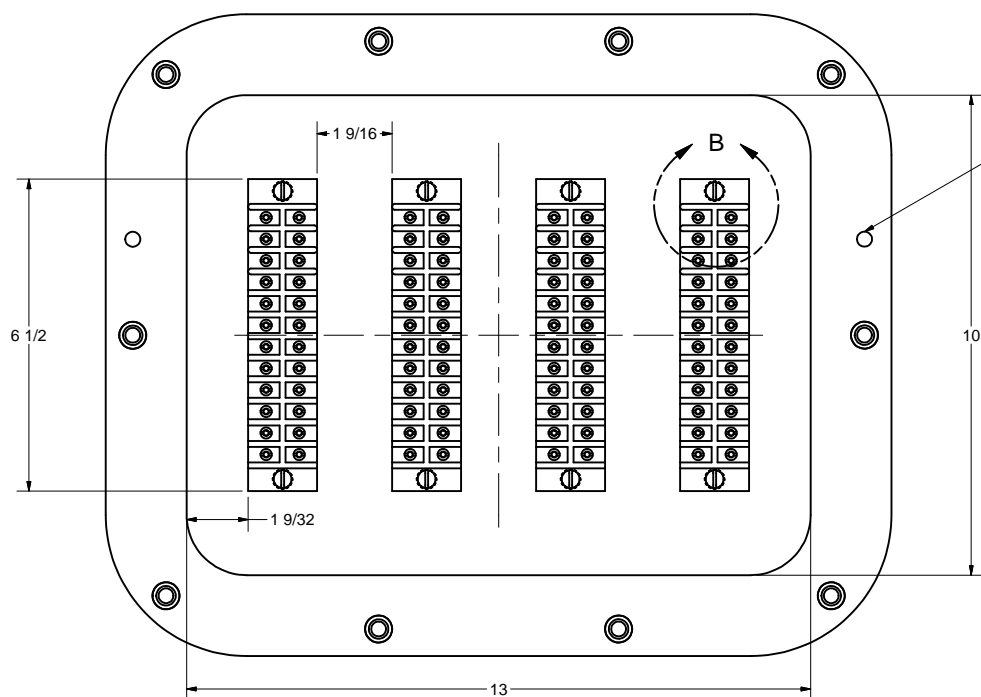
SIDE VIEW



BACK VIEW



DETAIL B



FRONT VIEW LESS COVER

COVER POSITIONING HOLE.
2 PLACES

- NOTES:
- THIS DRAWING DEVELOPED FROM MIL-DTL-24558/11A(1).
 - RATINGS AND SPECIFICATIONS:
A) 600 VOLTS, 30 AMPS MAXIMUM PER STUD OF TERMINAL BOARD.
B) 96 TERMINALS, 288 WIRES MAX.
C) DEGREE OF ENCLOSURE: SUBMERSIBLE TO 15 FEET (SBM-15) PER MIL-STD-108.
D) MAGNETIC PERMEABILITY: LESS THAN 2.0 FERROUS MATERIALS: NONE.
E) WEIGHT: 25 LBS MAX.
 - UNLESS OTHERWISE SPECIFIED, CABLE ENTRANCE DEVICES WILL BE PROVIDED AND INSTALLED BY THE INSTALLING ACTIVITY.
 - TERMINAL BOARDS ARE MOLDED BARRIER STUD TYPE, CLASS 6TB PER A-A-59125/12, MAXIMUM LUGS PER STUD IS 3. BU-SHIPS TYPE L81. STUDS ARE 6-32.
 - SHOCK AND VIBRATION APPROVAL BY EXTENSION HAS BEEN GRANTED FOR THIS EQUIPMENT BASED ON SIMILARITY TO M24142/6-014 ENCLOSURE PER SUPERVISOR OF SHIPBUILDING, CONVERSION AND REPAIR, USN, NEWPORT NEWS, LTR 9072 SER SSN688C1-273B/1479, DATED 11 AUG 1989 AND LTR 9072 SER CVN 74/75-273B/0608, DATED 05 APR 1995. M24142/6-014 HAS PASSED FIRST ARTICLE TESTING PER COMSACO REPORT FA-1008 AND AERO-NAV LABORATORIES TEST REPORT 8-0328, DATED 23 JUNE 1988. TESTS INCLUDED LIGHTWEIGHT SHOCK GRADE A, CLASS 1, TYPE A AND TYPE 1 VIBRATION.
 - BARREL NUTS FOR TERMINAL BOARDS TO BE PACKAGED SECURELY AND SHIPPED LOOSE INSIDE ENCLOSURE.
 - FINISH: INTERIOR ONLY WITH WHITE ENAMEL.

Parts List				
ITEM	QTY	PART NUMBER	DESCRIPTION	
1	1	200134	BOX WELDMENT, BRASS, 10X13X5	
2	1	200174-102	COVER WELDMENT, BRASS, DOMED, 10X13	
3	1	100146-4	GASKET, COVER, RUBBER	
4	4	6TB24	TERMINAL BOARD, 30A, 600V, 24T, A-A-59125/12	
5	8	X-RHM-BRS-024-750	SCREW, RHM, BRASS, 10-24 X 3/4"	
6	8	X-ELW-PHB-10	WASHER, EXT TOOTH, PHOS-BRZ, #10	
7	1	100260-1	NAMEPLATE, BRASS, BLANK	
8	1	100260-523.1	NAMEPLATE, BRASS, ENGRAVED	
9	4	X-RHM-BRS-632-250	SCREW, RHM, BRASS, 6-32 X 1/4"	
10	10	74031-5	BOLT, COVER, BRASS, 3/8-16 X 1-1/8"	
11	10	AN960B616	WASHER, FLAT, BRASS, 3/8"	
12	96	101250-3	BARREL NUT, BRASS, 6-32	

THIS DRAWING/DOCUMENT CONTAINS INFORMATION WHICH IS PROPRIETARY TO AND PROPERTY OF COMSACO, INC. IT IS DISTRIBUTED WITH THE UNDERSTANDING THAT IT WILL BE RETAINED IN CONFIDENCE AND WILL NEITHER BE DUPLICATED NOR COPIED IN WHOLE OR IN PART NOR USED FOR ANY PURPOSE OTHER THAN THAT FOR WHICH DISCLOSED WITHOUT EXPRESS WRITTEN PERMISSION FROM COMSACO, INC.

UNLESS OTHERWISE SPECIFIED DIMENSIONS ARE IN INCHES
TOLERANCES ARE:
FRACTIONS DECIMALS ANGLES
+/- 1/64 .XX .XXX .005

REDRAWN CHRIS WINDLEY ORIGINAL W WESTHOFF QA	10/18/2007	10/9/1987
MFG		
APPROVED		

COMSACO, INC.
NORFOLK, VA. 23502

TITLE
**TERMINAL BOX, BRASS, 96T,
SBM-15, SYM 523.1**

SIZE D 57626 CODE IDENT NO. 404-523.1 DWG NO. REV B

SCALE SHEET 1 OF 1

NEXT ASSY	USED ON
-----------	---------