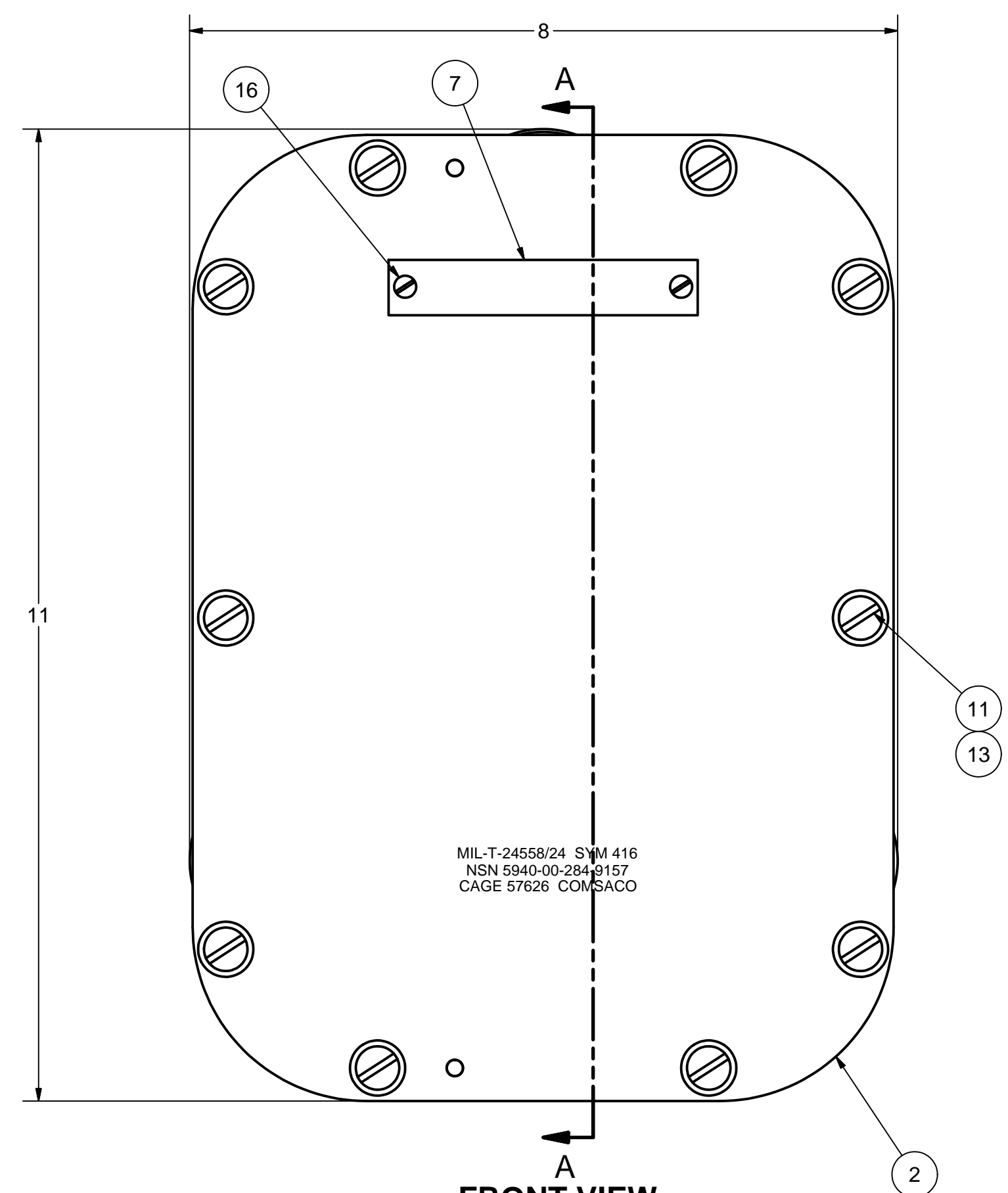
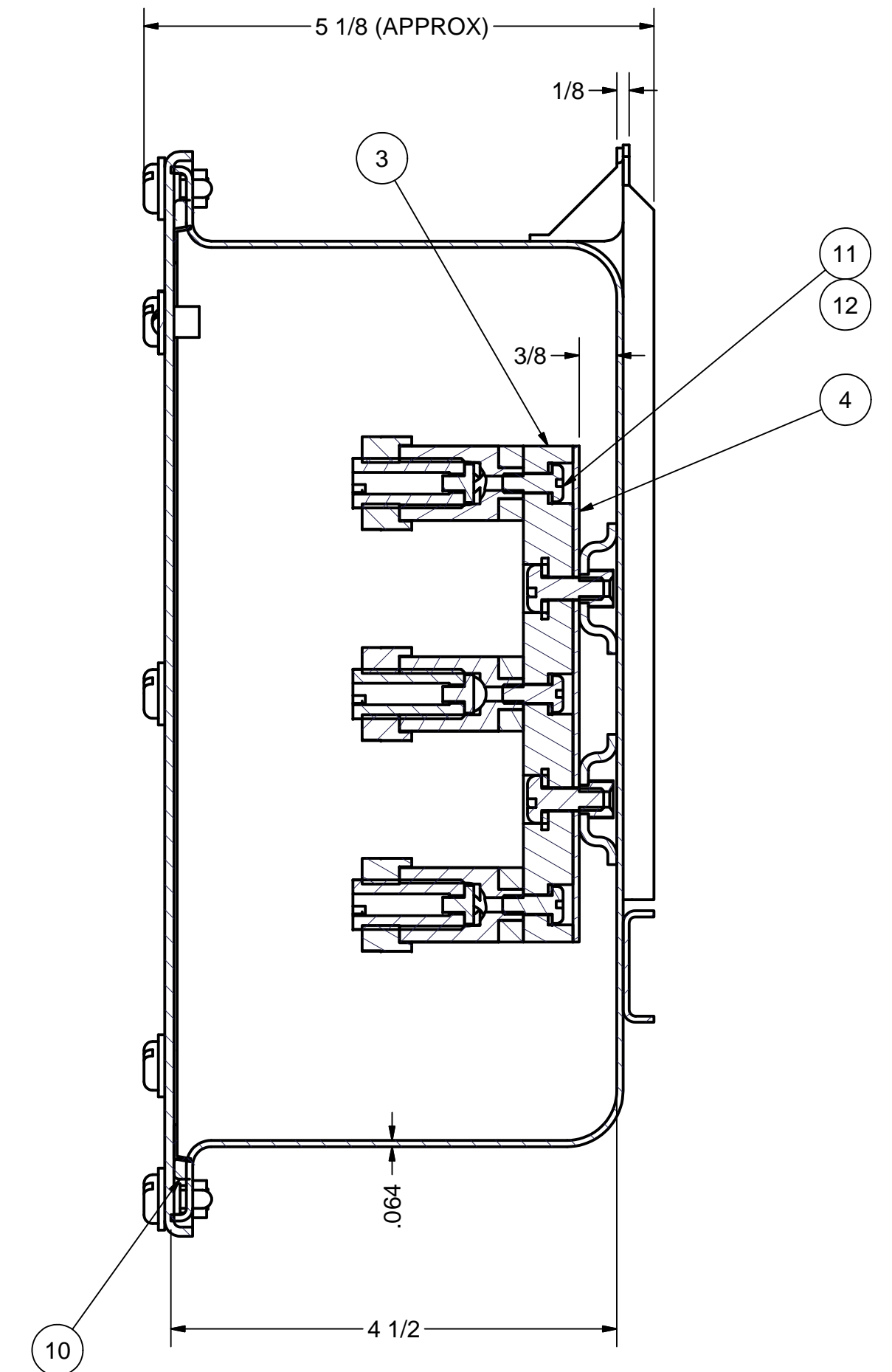


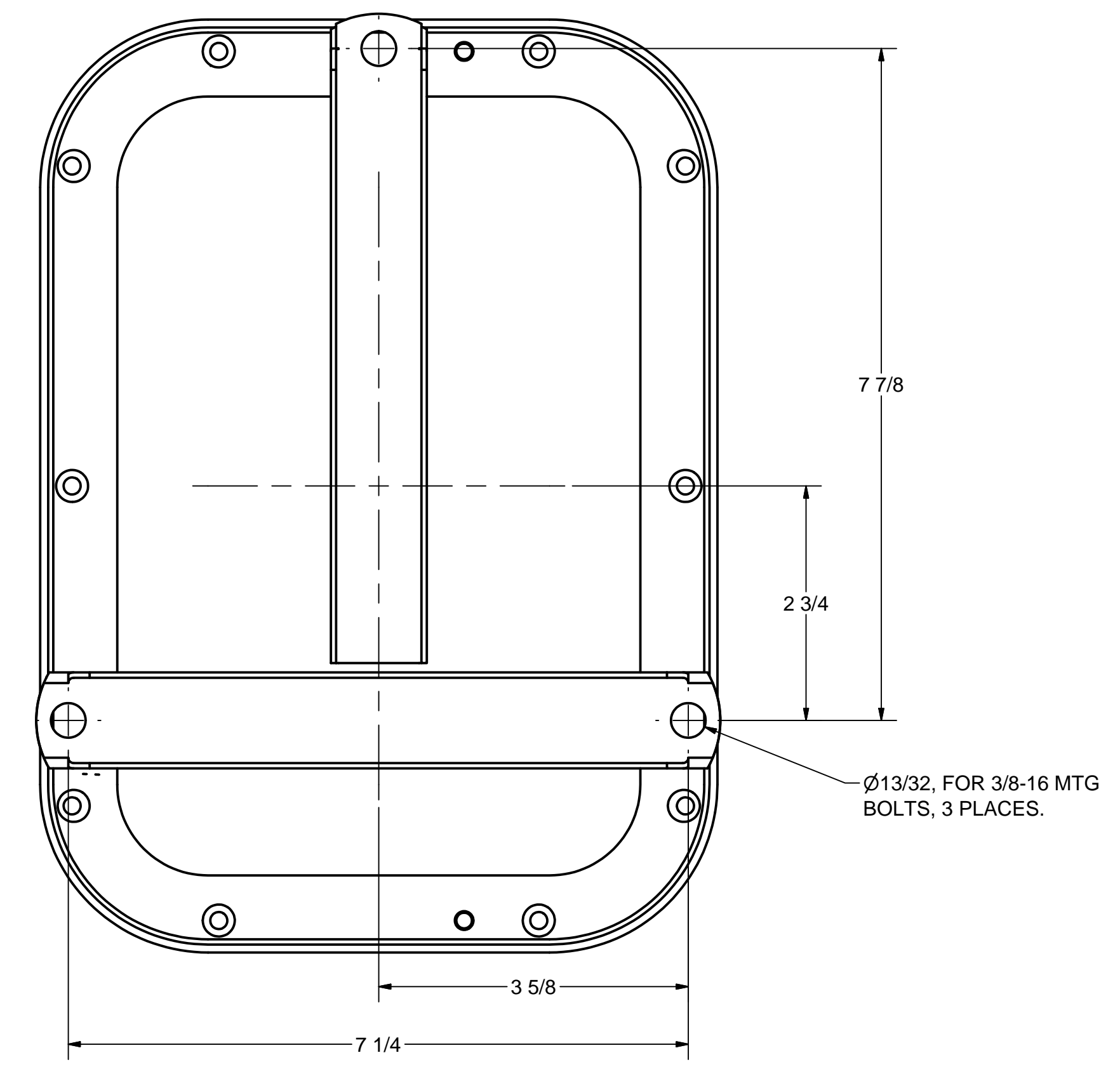
REVISIONS				
ZONE	REV	DESCRIPTION	DATE	AUTH
ALL	A	REVISED: PARTS LIST. DWG INTO CAD FORMAT. AUTH: MFR REQUIREMENTS.	6/7/05	WW
4A	B	ADDED: TEST DATE TO NOTE 4. CHANGED: TYPE C WAS TYPE A IN NOTE 4B. AUTH: MIL-T-24558.	11/13/06	WW
5B	C	REVISED: NOTE 1, WAS DEVELOPED FROM MIL-T-24558/24A. NOTE 2, WEIGHT WAS 8.1 LBS MAX. AUTH: DESIGN REQ.	12/3/09	WW



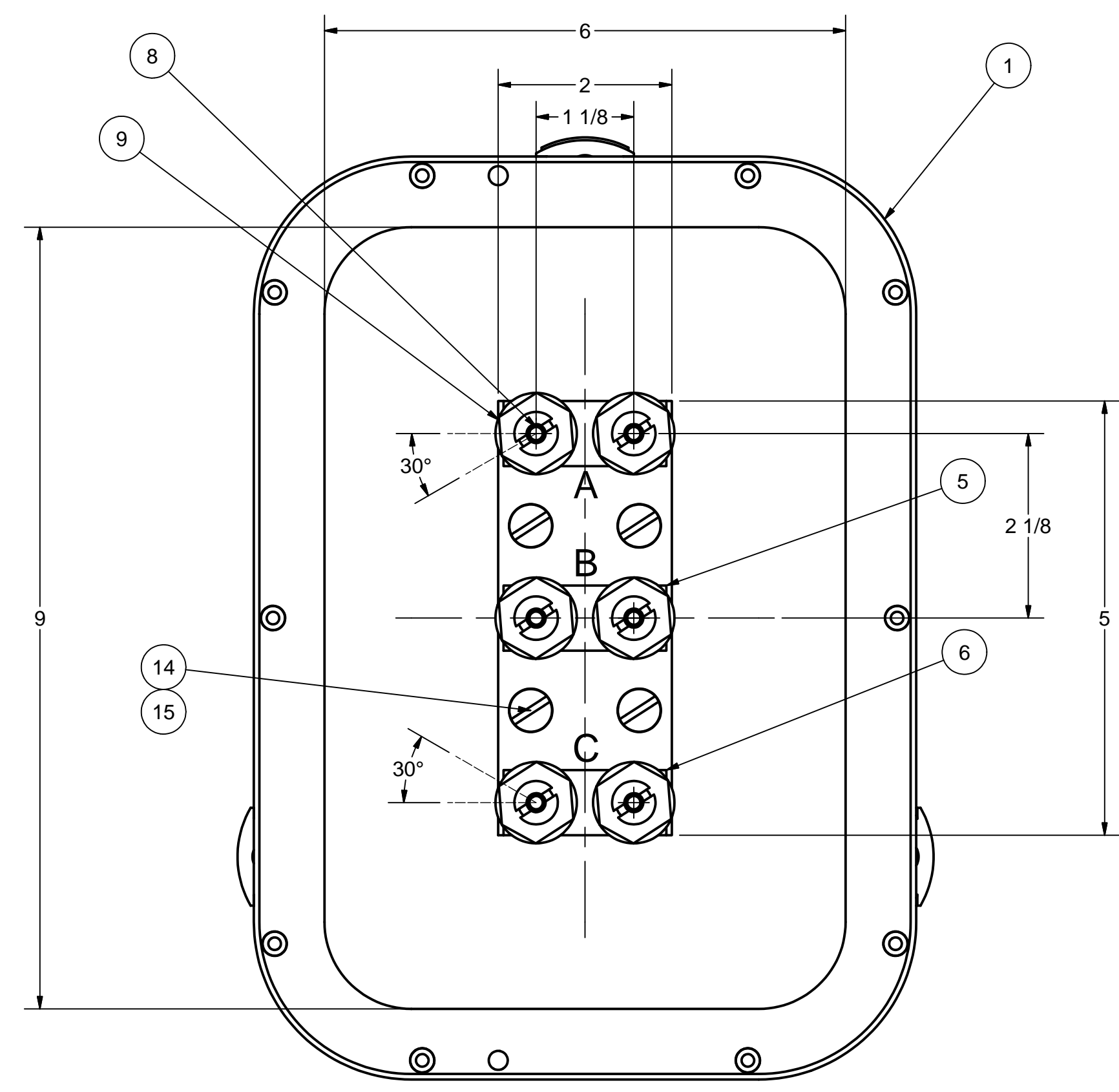
FRONT VIEW



SECTION A-A



BACK VIEW



FRONT VIEW LESS COVER

- NOTES:
- THIS DRAWING COMPLIES WITH MIL-DTL-24558/24A(1).
 - RATINGS AND SPECIFICATIONS:
 - 500 VOLTS AC/DC, 3PHASE/3WIRE, 200 AMPS MAXIMUM PER TERMINAL LUG.
 - CABLE SIZE IS 75 MCM MAX.
 - DEGREE OF ENCLOSURE: SUBMERSIBLE TO 15 FEET (SBM-15) PER MIL-STD-108.
 - MAGNETIC PERMEABILITY: LESS THAN 2.0 FERROUS MATERIALS: NONE.
 - WEIGHT: 10 LBS MAX. (8.3 LBS ACTUAL)
 - UNLESS OTHERWISE SPECIFIED, CABLE ENTRANCE DEVICES WILL BE PROVIDED AND INSTALLED BY THE INSTALLING ACTIVITY.
 - THIS EQUIPMENT TESTED UNDER COMSACO TEST REPORT FA-1100 HAS PASSED FIRST ARTICLE TESTING DATED 18AUG2005, PER MIL-T-24558(SH) PARAGRAPH 4.4. TESTS INCLUDED:
 - VIBRATION PER MIL-STD-167 TYPE I. EXPLORATORY AND ENDURANCE UP TO 50HZ.
 - SHOCK PER MIL-S-901D: LIGHTWEIGHT HIGH IMPACT, GRADE A, CLASS I, TYPE C, BULKHEAD MOUNTED, BACK MTG PLANE, UNRESTRICTED ORIENTATION.
 - EFFECTIVENESS OF ENCLOSURE PER MIL-STD-108. (SBM-15FT)

Parts List			
ITEM	QTY	PART NUMBER	DESCRIPTION
1	1	200301	BOX WELDMENT, BRASS, 6 X 9 X 4-1/2
2	1	200142	COVER WELDMENT, BRASS, 6 X 9
3	1	100959-1	INSULATOR BLOCK, 1/2" GME
4	1	100959-2	INSULATOR BARRIER, 1/16" GME
5	1	200302	TERMINAL WELDMENT, BRASS, STRAIGHT
6	2	200303	TERMINAL WELDMENT, BRASS, ANGLED
7	1	100260-1	NAMEPLATE, BRASS, BLANK
8	6	73246-8-13	PRESSURE SCREW & DISC ASSY, BRASS
9	6	73246-18	LOCKNUT, BRASS
10	1	MS28775-373	"O" RING GASKET, RUBBER
11	16	X-RHM-BRS-024-500	RHMS, BRASS, 10-24 X 1/2"
12	6	X-ILW-PHB-10	WASHER, INT TOOTH, PHOS-BRZ, #10
13	10	X-FLW-BRS-10	WASHER, FLAT, BRASS, #10
14	4	X-RHM-BRS-420-625	RHMS, BRASS, 1/4-20 X 5/8"
15	4	X-ILW-PHB-250	WASHER, INT TOOTH, PHOS-BRZ, 1/4"
16	2	X-RHM-BRS-632-250	RHMS, BRASS, 6-32 X 1/4"

REDRAWN CHRIS WINDLEY ORIGINAL A WESTHOFF QA MFG APPROVED	6/6/2005 9/17/2001	COMSACO, INC. NORFOLK, VA. 23502
TITLE		TERMINAL BOX ASSY, 2 CKT, 3 PH, 500V, SBM-15, SYM 416
SIZE	CODE IDENT NO	DWG NO
D	57626	404-416
SCALE		REV C
SHEET 1 OF 1		

UNLESS OTHERWISE SPECIFIED
DIMENSIONS ARE IN INCHES
TOLERANCES ARE:
FRACTIONS DECIMALS ANGLES
+/- 1/64 .XX .XXX .005

NEXT ASSY	USED ON
-----------	---------