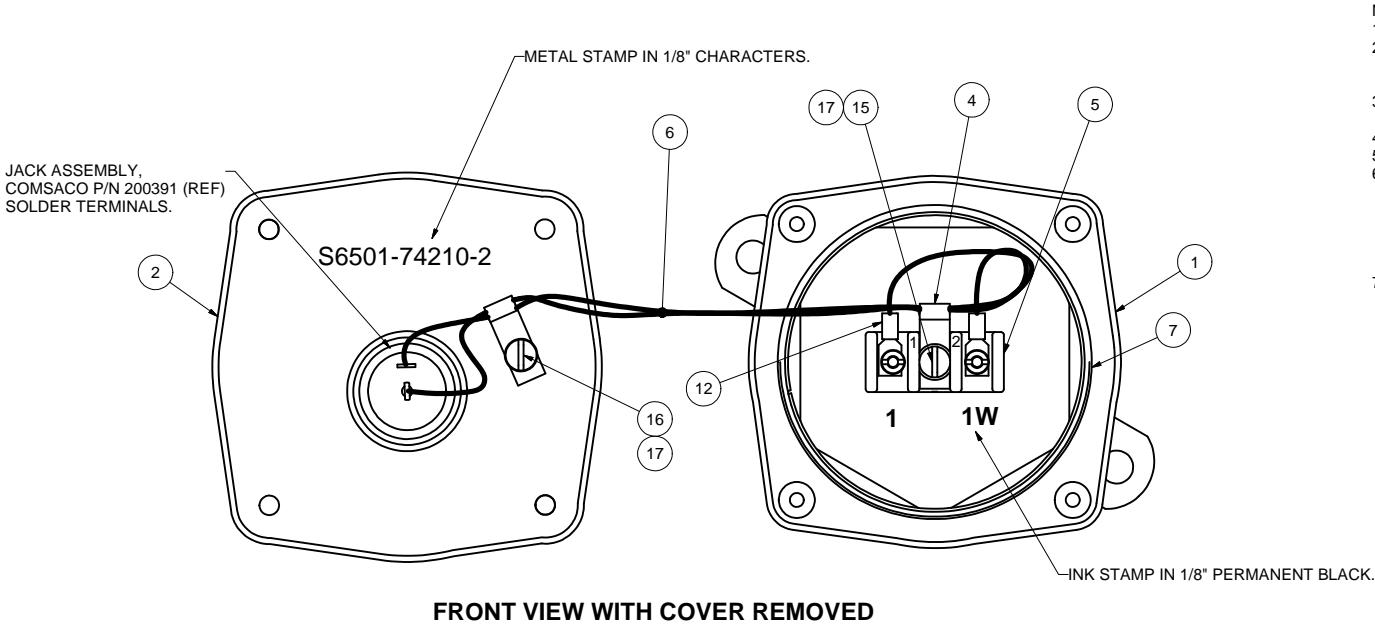
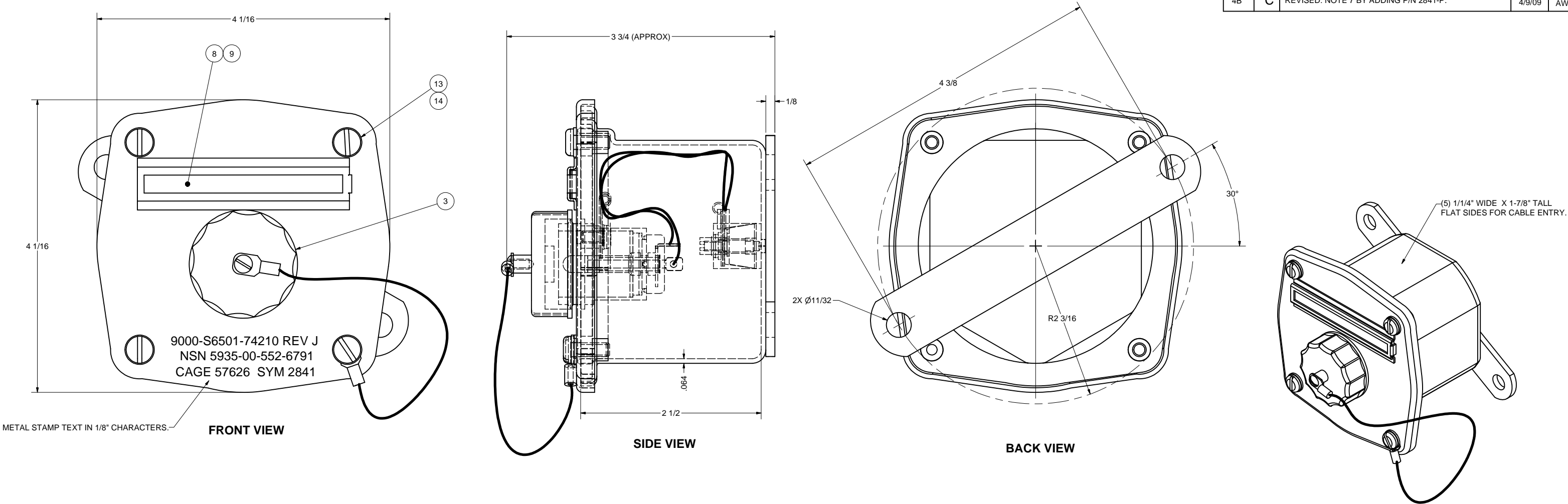


REVISIONS				
ZONE	REV	DESCRIPTION	DATE	AUTH
1B	A	CHANGE: P/N DESCRIPTION, ITEM 14 WAS 1/4" LG, 15 WAS 5/8" LG, 18 WAS 3/8" LG, 16 WAS EXT TOOTH. AUTH: ECO 1019.	9/20/02	AW
ALL	B	ADDED: NOTES 5, 6 & 7. REVISED: DWG INTO CAD FORMAT.	4/25/07	WW
4B	C	REVISED: NOTE 7 BY ADDING P/N 2841-P.	4/9/09	AW



- NOTES:
1. THIS DRAWING DEVELOPED FROM NAVSHIPS DRAWING 9000-S-74210J.
 2. RATINGS:
 - A) DEGREE OF ENCLOSURE: SUBMERSIBLE 15 FEET PER MIL-STD-108E.
 - B) MAGNETIC PERMEABILITY: LESS THAN 2.0 FERROUS MATERIALS: NONE.
 3. UNLESS OTHERWISE SPECIFIED CABLE ENTRANCE DEVICES WILL BE PROVIDED AND INSTALLED BY THE INSTALLING ACTIVITY.
 4. MATES WITH PLUG SYM 2922, TYPE H39A PER NAVSHIPS DWG 74211.
 5. TOTAL WEIGHT IS 1.5LBS.
 6. THIS EQUIPMENT HAS BEEN QUALIFIED UNDER MIL-S-901D LIGHT WEIGHT HIGH IMPACT SHOCK, GRADE A, CLASS 1, TYPE A, HULL MOUNTED, BACK MOUNTING PLANE, UNRESTRICTED ORIENTATION AND MIL-STD-167-1 VIBRATION THROUGH GOVERNMENT APPROVAL LETTER 9072 SER CVN75PSA-273F/0006, DATED 20JAN2000. APPROVAL GRANTED THROUGH EXTENSION FROM TESTED EQUIPMENT SYMBOL 2843 WHICH WAS QUALIFIED PER AERONAV LABORATORIES, INC. REPORT 9-3948 AND COMSACO, INC. REPORT SV-1066 REV. TESTS WERE CONDUCTED WITH SYMBOL 2922 PLUGS INSTALLED.
 7. FINISH: INTERIOR OF BOX WHITE ENAMEL ONLY FOR SYMBOL 2841.
FOR SYMBOL 2841-P EXTERIOR COVER & BOX ONLY FINISHED GREY.

Parts List			
ITEM	QTY	PART NUMBER	DESCRIPTION
1	1	200372	BOX WELDMENT, BRASS, 3" RND
2	1	200370	COVER WELDMENT, BRASS, 3" RND,
3	1	400101	CAP, PLASTIC, ASSEMBLY
4	2	100537-1	CABLE CLAMP, NYLON, W/LANYARD
5	1	9TB2	TERMINAL BOARD, 2T, 35A, 300V
6	2'	B-20 BLACK	WIRE, 20AWG, BLACK, M16878/1
7	1	MS28775-339	O-RING, GASKET, RUBBER
8	1	100478-2	PROTECTIVE STRIP, CLEAR
9	1	100479-2	MARKER STRIP, PLASTIC, WHITE W/BLACK CORE
10	1	WM-JB-1	WIRE MARKER
11	1	WM-JB-1W	WIRE MARKER
12	2	MS21004-4	LUG, TERMINAL, RECT, 22-18 AWG, #6 STUD
13	4	X-FLW-BRS-10	WASHER, FLAT, BRASS, #10
14	4	X-RHM-BRS-024-500	SCREW, RHM, BRASS, 10-24 X 1/2"
15	1	X-RHM-BRS-832-500	SCREW, BRASS, 8-32 X 1/2"
16	1	X-RHM-BRS-832-250	SCREW, RHM, BRASS, 8-32 X 1/4"
17	2	X-ILW-PHB-8	WASHER, INT TOOTH, PHOS-BRZ, #8

REDRAWN CHRIS WINDLEY		4/17/2007	COMSACO, INC. NORFOLK, VA. 23502	
ORIGINAL W WESTHOFF		11/12/1992		
QA			JACK BOX ASSY, SINGLE, SBM-15, SYMBOL 2841	
MFG				
APPROVED			SIZE CODE IDENT NO DWG NO	
			D 57626 404-2841	
			SCALE	
			SHEET 1 OF 1	

NEXT ASSY	USED ON
-----------	---------