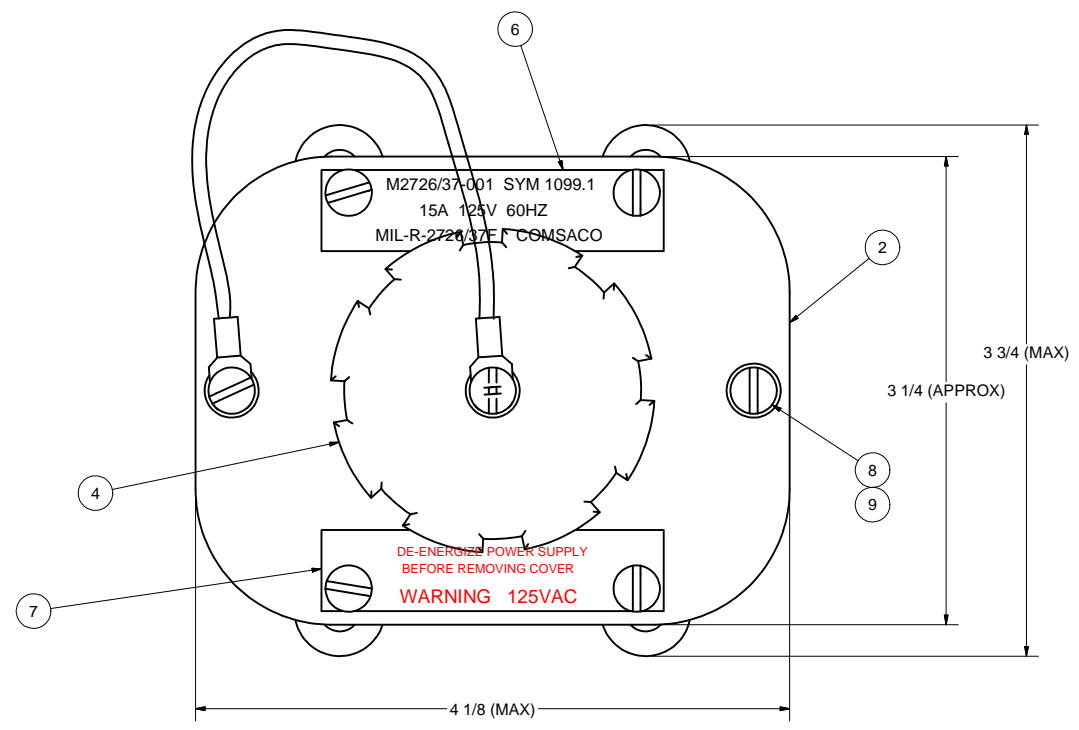
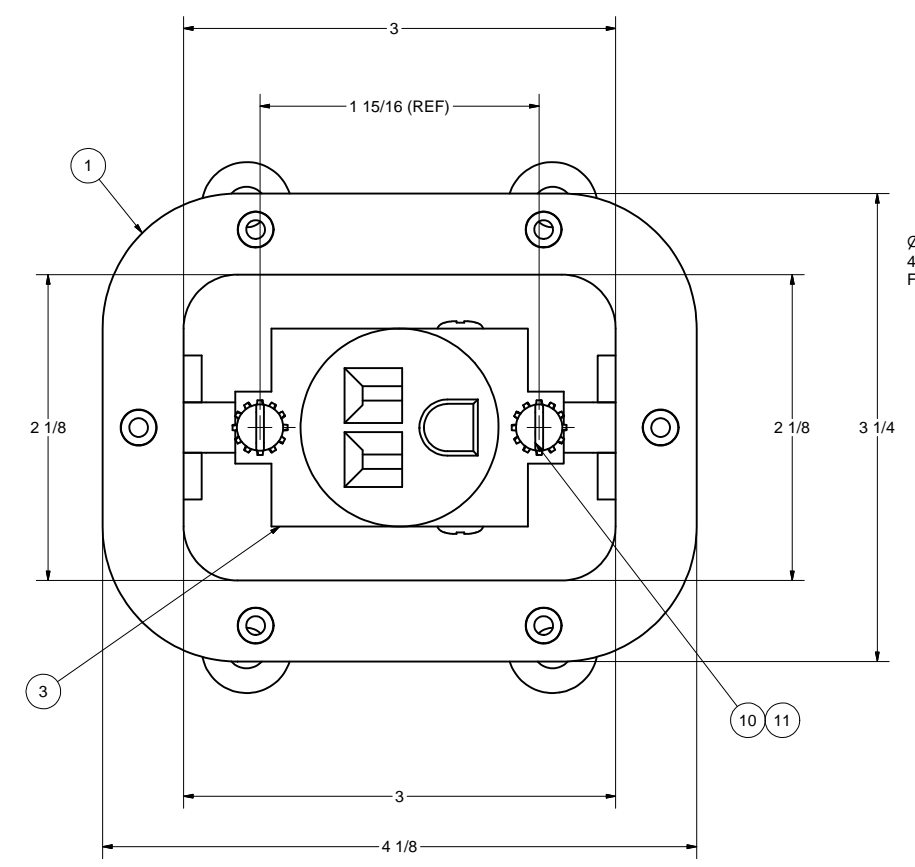


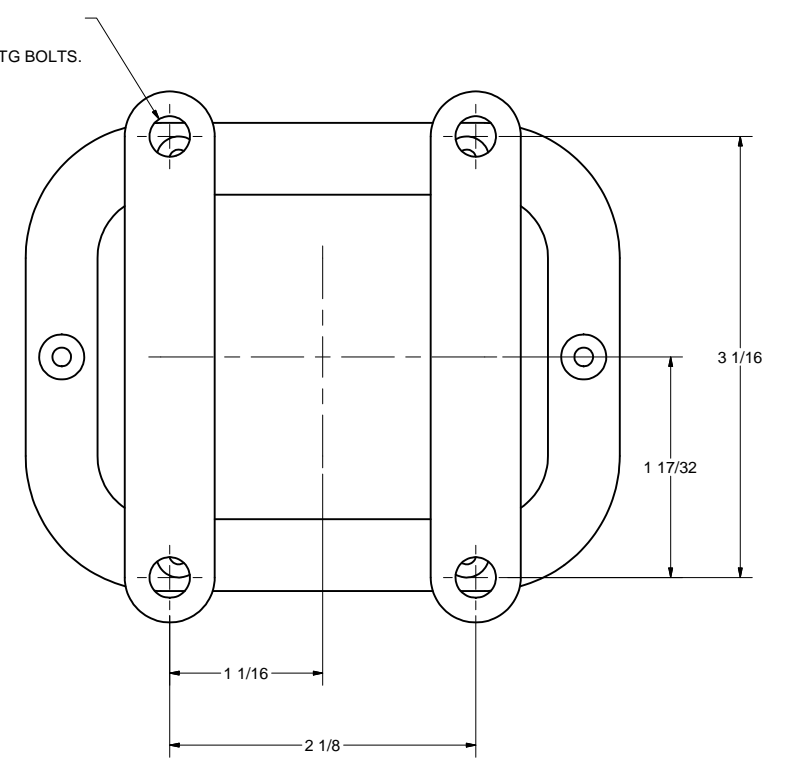
REVISIONS				
ZONE	REV	DESCRIPTION	DATE	AUTH
1A	A	DELETED: LUG, A-87. REVISED: ITEM 3 P/N WAS M2726-37-001-1 ITEM 4 P/N WAS M2726-37 CAP ASSY DWG INTO CAD FORMAT. AUTH: MFR REQUIREMENTS.	10/5/05	WW
1B	B	CHANGED: ITEM 9 WAS RB-864. AUTH: INVENTORY REQUIRMENT.	10/1/07	AW
5A 1B ALL	C	CHANGED: ITEM 1 WAS 200279, ITEM 2 WAS 200280. DELETED: GROUND HARDWARE (LUGS, WIRE). REVISED: P/L HARDWARE TO MOUNT RECEPTACLE ON BRACKETS, VICE TO COVER. NOTE 1, WAS MIL-R-2726 /37E. ECO: 1371	6/20/08	AW
7C	D	REVISED: WARNING LABEL WAS P/N 100396. AUTH: DESIGN REQ.	9/1/09	AW



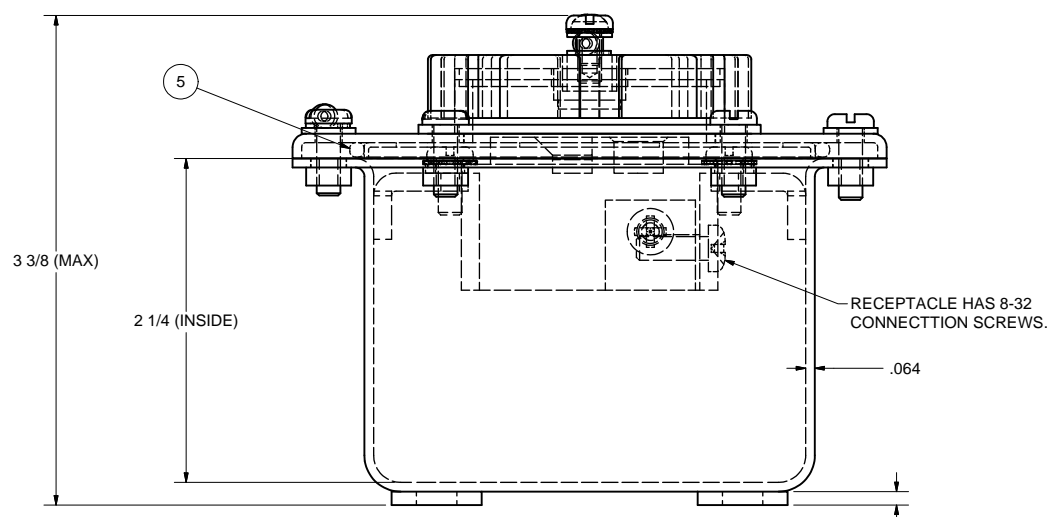
FRONT VIEW



FRONT VIEW LESS COVER



BACK VIEW



SIDE VIEW

- NOTES:**
- THIS DRAWING DEVELOPED FROM MIL-DTL-2726/37F AND MIL-DTL-2726C.
 - RECEPTACLE FITTING, ITEM 3 IS INDUSTRY NUMBER 5284 MODIFIED TO HAVE NICKLE PLATED GROUND CONTACTS AND MOUNTING STRAP.
 - INTENDED USE: PROVIDES WATERTIGHT RECEPTACLE FOR USE WITH 125 VAC, 60 HZ SINGLE PHASE POWER. MATES WITH SYMBOL 1218.3 PLUG.
 - RATINGS:
 - A) 125VAC, 15AMPS, 60HZ, SINGLE PHASE, GROUNDING.
 - B) DEGREE OF ENCLOSURE: WATERTIGHT PER MIL-STD-108E.
 - C) SHOCKPROOF: GRADE A, CLASS I, TYPE A PER MIL-S-901D. APPROVED PER SUPSHIPS BATH LETTER 9072 SER 254/2842 DATED 24 SEP 1991. BASED ON LIGHTWEIGHT TESTING USING FIXTURE TYPE 4A.
 - D) VIBRATION: MIL-STD-167 TYPE 1: TESTED TO 50HZ.
 - E) FIRST ARTICLE TESTING PER MIL-R-2726/37C AND MIL-R-2726A. FIRST ARTICLE APPROVAL GRANTED BY SUPSHIPS NEWPORT NEWS LTR 9072, SER CVN65COH-272A/1923 DATED 18 SEP 1992.

Parts List			
ITEM	QTY	PART NUMBER	DESCRIPTION
1	1	200469	BOX WELDMENT, BRASS, 2-1/8 X 3
2	1	200362	COVER WELDMENT, BRASS, 2-1/8 X 3
3	1	M2726-37-001-1	RECEPTACLE, SINGLE, 125VAC, 15A, 5284BCR
4	1	400179-101	CAP ASSEMBLY, PLASTIC
5	1	MS28775-234	"O" RING GASKET, RUBBER
6	1	100397-1	NAMEPLATE, BRASS, ENGRAVED
7	1	101312	WARNING PLATE, BRASS, ENGRAVED
8	6	X-RHM-BRS-832-050	SCREW, RHM, BRASS, 8-32 X 1/2"
9	2	X-FLW-BRS-8	WASHER, FLAT, BRASS, #8
10	2	X-ELW-CRES-8	WASHER, EXT TOOTH, CRES, #8
11	2	X-RHM-SS-832-375	SCREW, RHM, CRES, 8-32 X 3/8" LG

REDRAWN
CHRIS WINDLEY 3/24/2005
ORIGINAL
W WESTHOFF 12/11/1998
QA
MFG
APPROVED

COMSACO, INC.
NORFOLK, VA. 23502

RECEPTACLE ASSY, SINGLE, 125VAC, 15A, WT, SYM 1099.1

SIZE: D 57626
CODE IDENT NO: 404-1099.1
DWG NO: 404-1099.1
REV: D

SCALE: SHEET 1 OF 1

UNLESS OTHERWISE SPECIFIED
DIMENSIONS ARE IN INCHES
TOLERANCES ARE:
FRACTIONS DECIMALS ANGLES
+/- 1/64 .XX .XXX .005

NEXT ASSY USED ON