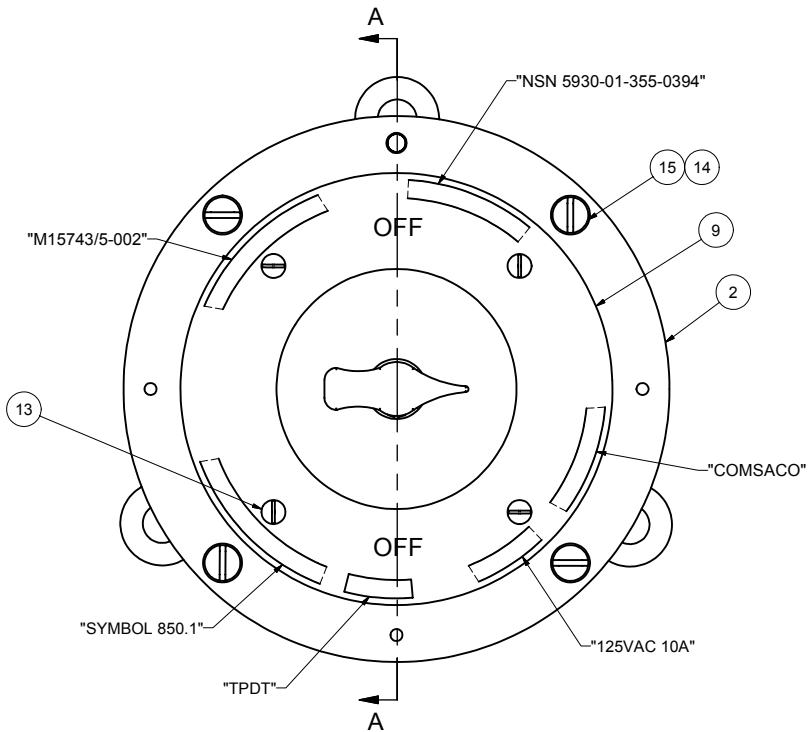
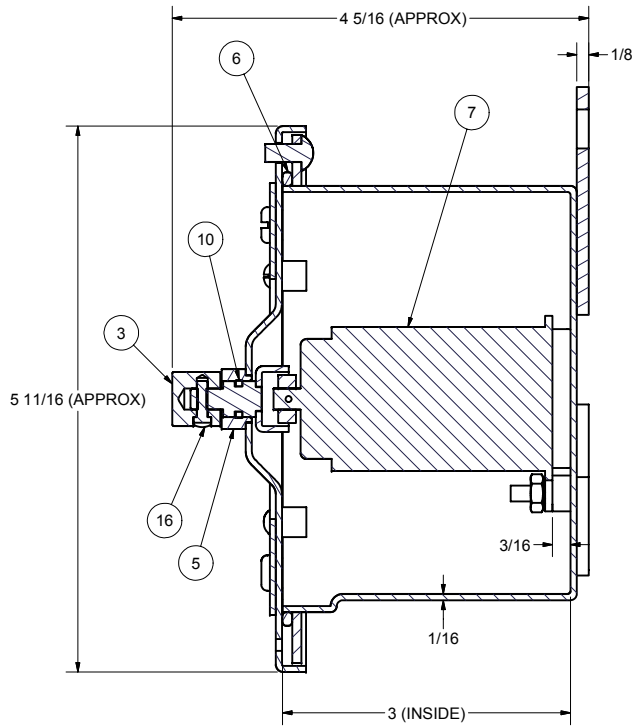


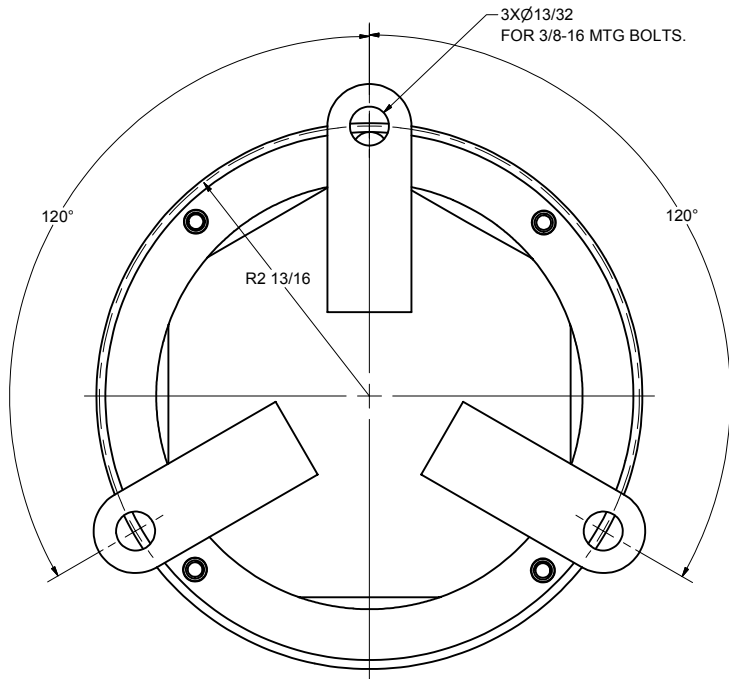
REVISIONS			
ZONE	REV	DESCRIPTION	AUTH



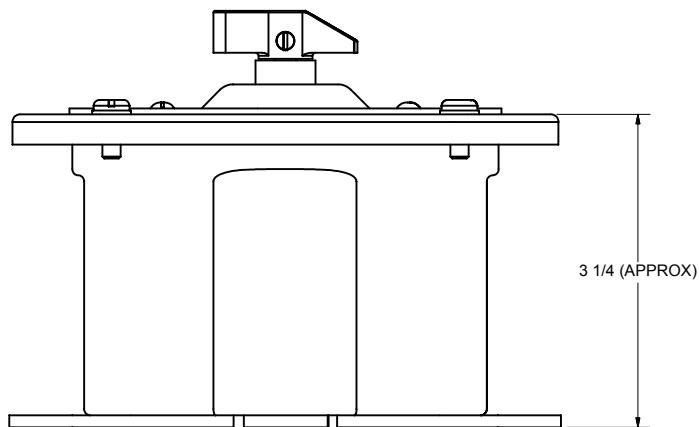
FRONT VIEW



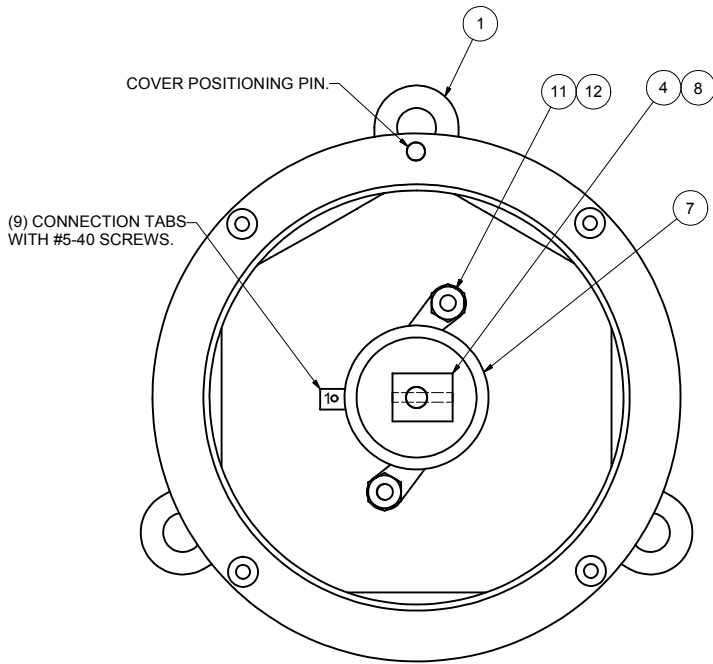
SECTION A-A



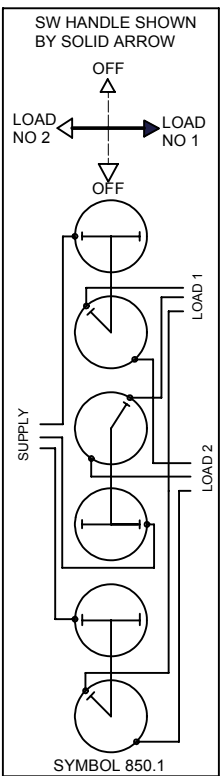
BACK VIEW



SIDE VIEW



FRONT VIEW LESS COVER



Parts List			
ITEM	QTY	PART NUMBER	DESCRIPTION
1	1	200458	BOX WELDMENT, BRASS, 4" ROUND
2	1	74207-23	COVER WELDMENT, BRASS, 4" ROUND
3	1	74000-4	HANDLE, SWITCH, BRASS
4	1	74000-198	PLATE, COUPLER, BRASS
5	1	74000-199	SHAFT WELDMENT
6	1	MS28775-245	"O" RING COVER GASKET, RUBBER
7	1	1SR3B4	SWITCH, ROTARY, 125VAC, 10A, M15291/3-011
8	1	100531-2	ROLL PIN, CRES, 1/16" OD X 5/8"
9	1	100573-1	INFO PLATE, ENGRAVED FOR SYM 850.1
10	1	MS28775-010	"O" RING SHAFT GASKET, RUBBER
11	2	X-NUT-BRS-832	NUT, HEX, BRASS, 8-32
12	2	X-ILW-PHB-8	WASHER, INT TOOTH, PHOS-BRZ, #8
13	4	X-RHM-BRS-632-250	SCREW, RHM, BRASS, 6-32 X 1/4"
14	4	X-FLW-BRS-10	WASHER, FLAT, BRASS, #10
15	4	X-RHM-BRS-024-500	SCREW, RHM, BRASS, 10-24 X 1/2"
16	1	X-FH-SS-440-375	SCREW, FILLISTER HD, CRES, 4-40 X 3/8"
17	1	WD-850.1	WIRING DIAGRAM, LAMINATED PAPER

NOTES:
1. THIS DRAWING DEVELOPED FROM 9-S-74207H SHEET 6 AND MIL-DTL-15743/5C.
2. EFFECTIVENESS OF ENCLOSURE: SUBMERSIBLE 15 FEET PER MIL-STD-108E(1).
3. ELECTRICAL RATING IS 125VAC, 10AMP, 60Hz, TPDT.
4. TOTAL WEIGHT IS 2.75 LBS.
5. SHOCK AND VIBRATION EXTENSION APPROVAL FROM SYMBOL 838.1 APPROVED BY SUPERVISOR OF SHIPBUILDING, CONVERSION AND REPAIR, NEWPORT NEWS. PER LETTER 9072/9073 SER CVN65/CVN68 CLASS/CVN 77-272CD/0517, DATED 20 MAY 2003. EXTENSION APPROVAL BASED ON COMSACO/AERO NAV TEST REPORT 7-9981 DATED 11 NOV 1987, FOR HI-IMPACT SHOCK PER MIL-S-901, GR A, CL I, TYPE A, LIGHTWEIGHT AND ENVIRONMENTAL VIBRATION PER MIL-STD-167-1, TYPE I.

THIS DRAWING/DOCUMENT CONTAINS INFORMATION WHICH IS PROPRIETARY TO AND PROPERTY OF COMSACO, INC. IT IS DISTRIBUTED WITH THE UNDERSTANDING THAT IT WILL BE RETAINED IN CONFIDENCE AND WILL NEITHER BE DUPLICATED NOR COPIED IN WHOLE OR IN PART NOR USED FOR ANY PURPOSE OTHER THAN THAT FOR WHICH DISCLOSED WITHOUT EXPRESS WRITTEN PERMISSION FROM COMSACO, INC.

UNLESS OTHERWISE SPECIFIED
DIMENSIONS ARE IN INCHES
TOLERANCES ARE:
FRACTIONS DECIMALS ANGLES
+/- 1/64 .XX .XXX .005

DRAWN CHRIS WINDLEY	5/27/2008
CHECKED W WESTHOFF	5/29/2008
QA	
MFG	
APPROVED	

COMSACO, INC. NORFOLK, VA. 23502	
TITLE ROTARY SW ASSY, BRASS, SBM-15, SYMBOL 850.1	
SIZE D 57626	CODE IDENT NO 404-850.1
SCALE	REV -
SHEET 1 OF 1	

NEXT ASSY	USED ON