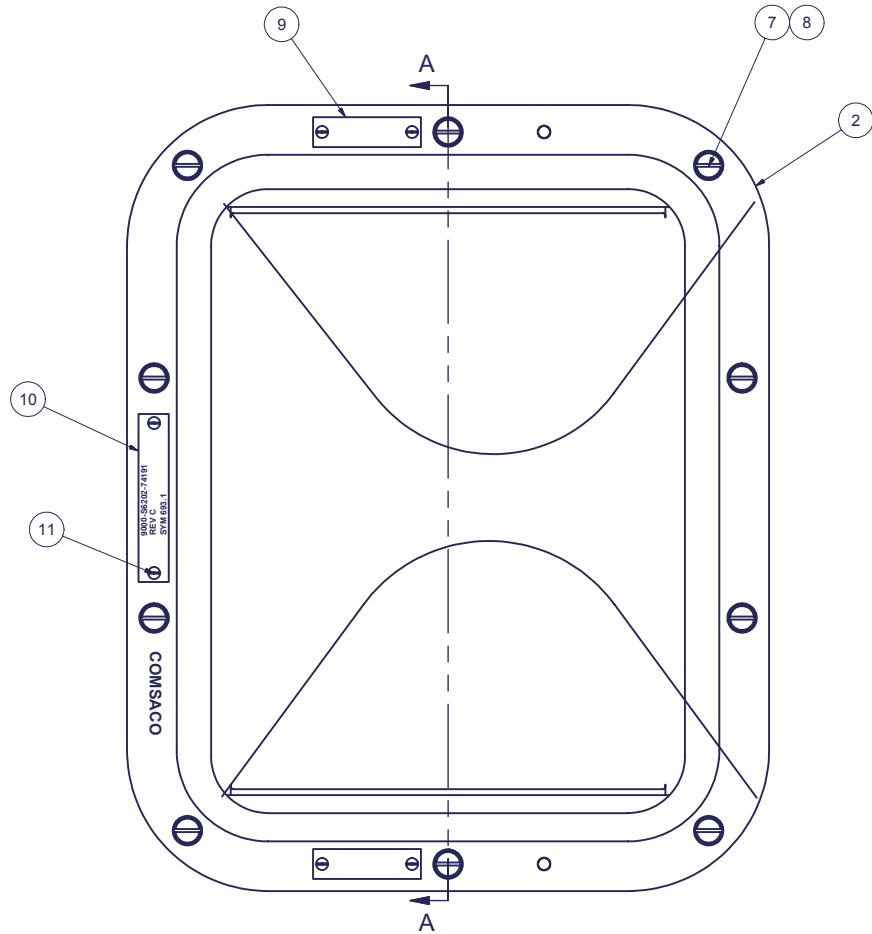
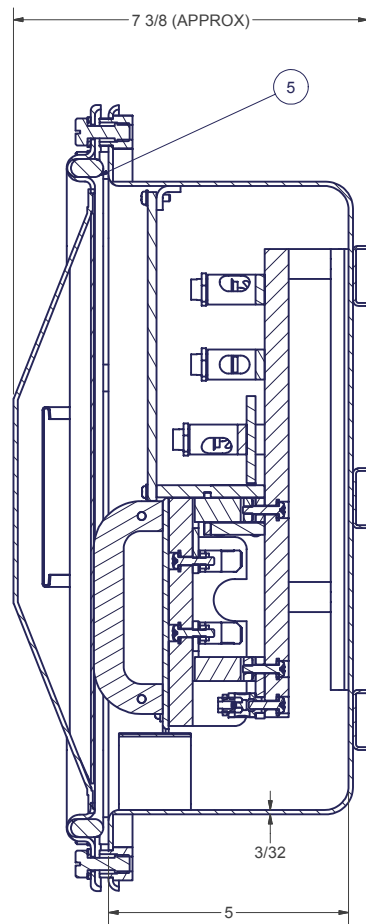


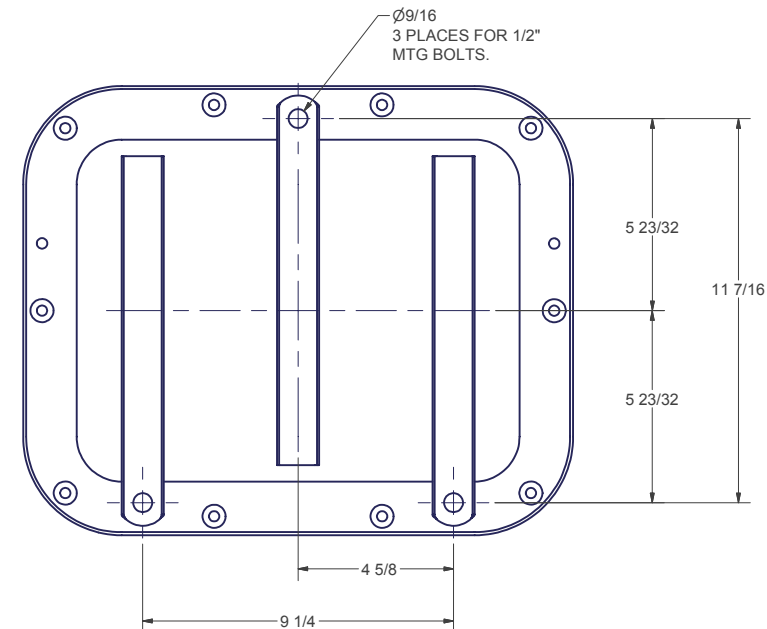
ZONE		REV	REVISIONS	DATE	AUTH
8A			ADDED: NOTE 4, SECTION VIEW A-A, WIRING DIAGRAM.		
8B			DELETED: SIDE VIEW.		
1A		A	REVISED: DWG TO MATCH 9-S-74191.	11/9/04	WW
8B			AUTH: DESIGN REQUIREMENTS.		
1A		B	ADDED: ITEMS 16 & 17. CHANGED: ITEM 12 & 13 QTY WAS 4. ITEM 14 WAS 10-24, ITEM 15 WAS SIZE #10.	4/21/08	AW
			AUTH: MFR REQUIREMENT.		



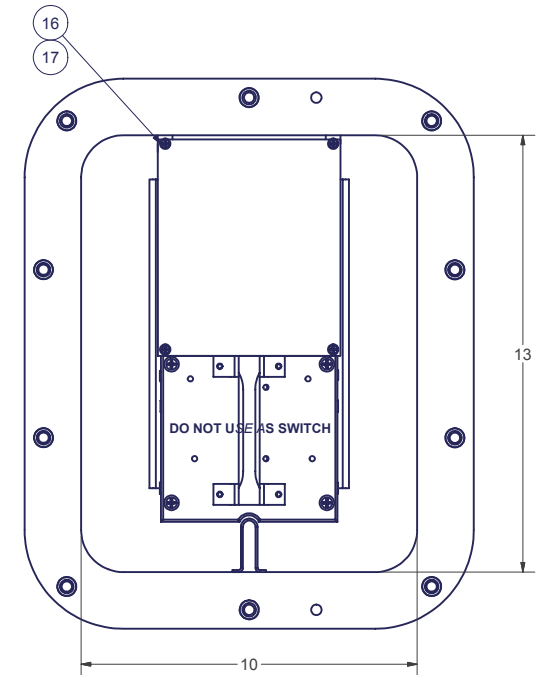
FRONT VIEW



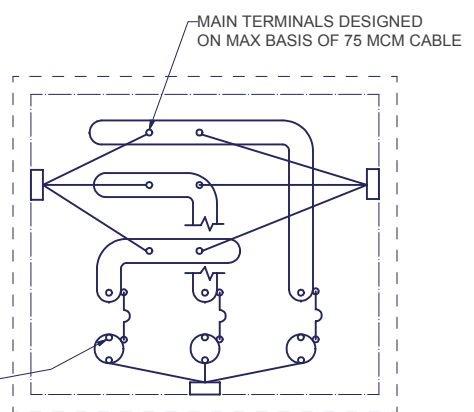
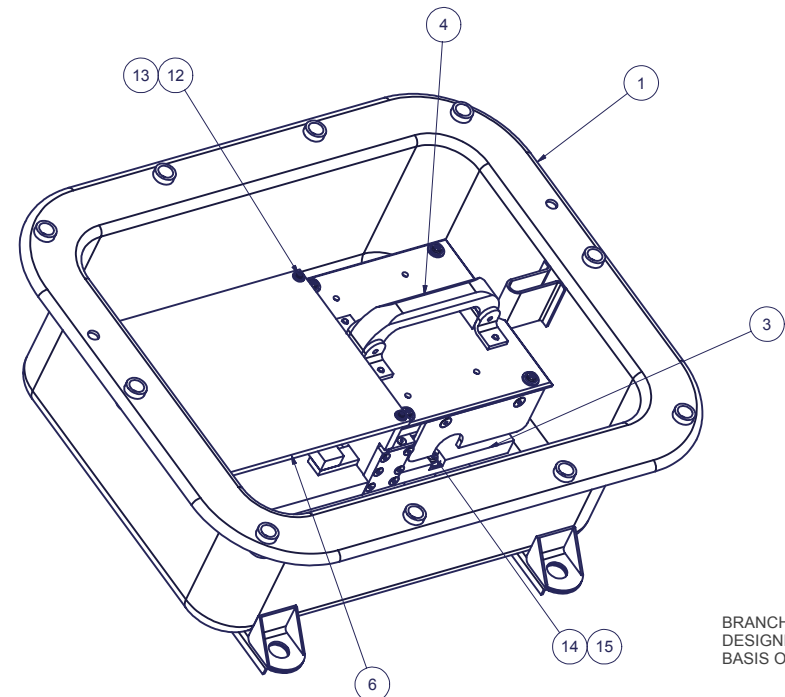
SECTION A-A



BACK VIEW



FRONT VIEW LESS COVER



WIRING DIAGRAM SYM 693.1

NOTES:
 1. THIS DWG DEVELOPED FROM MIL-F-24646/17, MIL-E-24142/6-004 AND 9-S-74191.
 2. RATINGS AND SPECIFICATIONS:
 A) 500 VOLTS AC
 B) 0-30 AMPERE
 C) 60 HERTZ
 D) DEGREE OF ENCLOSURE: SUBMERSIBLE (15 FEET)
 3. THE FUSE PULLER ASSEMBLY SHALL HAVE BLADES THAT ENGAGE THE JAWS FASTENED TO THE BASE. THE BLADES SHALL SPREAD THE JAWS. THE JAWS SHALL GRIP THE BLADE WITH ENOUGH FORCE TO PREVENT HEATING WHEN UNDER FULL LOAD.
 4. TOTAL WEIGHT 29 LBS(EST).

Parts List			
ITEM	QTY	PART NUMBER	DESCRIPTION
1	1	200565	BOX WELDM,ENT, BRASS, 10 X 13 X 5
2	1	200566	COVER WELDMNT, BRASS, 10 X 13 DOMED
3	1	400165	FUSE PANEL SUB-ASSY, GME
4	1	400164	FUSE PULLER ASSY, GME
5	1	100146-4	GASKET, COVER, RUBBER
6	1	100744	BUS GUARD, GME
7	10	AN960B616	WASHER, FLAT, BRASS, 3/8
8	10	74031-5	BOLT, COVER, BRASS, 3/8-16
9	2	74031-25	NAMEPLATE PLATE, BRASS
10	1	100260-693.1	ID PLATE, BRASS
11	6	X-RHM-BRS-632-250	RHMS, BRASS, 6-32 X 1/4"
12	2	X-RHM-BRS-540-500	RHMS, BRASS, 5-40 X 1/2"
13	2	X-ELW-PHB-5	WASHER, SHK PRF, PHOS- BZ, #5
14	4	X-RHM-BRS-1224-750	RHMS, BRASS, 12-24 x 3/4"
15	4	X-ELW-PHB-12	WASHER, SHK PRF, PHOS-BRZ, #12
16	2	X-RHM-BRS-632-500	RHMS, BRASS, 6-32 X 1/2"
17	2	X-ELW-PHB-6	WASHER, SHK PRF, PHOS-BRZ, #6

DRAWN: CHRIS WINDLEY 7/17/2001
 CHECKED: ADAM WESTHOFF 9/21/2001
 QA: _____
 MFG: _____
 APPROVED: _____

COMSACO, INC.
 NORFOLK, VA. 23502

TITLE: **FUSE PANEL, 1CKT, NO/SWS, 3 PHASE, SBM, SYM 693.1**

SIZE: D CODE IDENT NO. 57626 DWG NO. 404-693.1 REV. B

SCALE: _____ SHEET 1 OF 1

SYM 693.1	UNLESS OTHERWISE SPECIFIED DIMENSIONS ARE IN INCHES TOLERANCES ARE: FRACTIONS DECIMALS ANGLES +/- 1/64 .XX .XXX .005
NEXT ASSY USED ON	