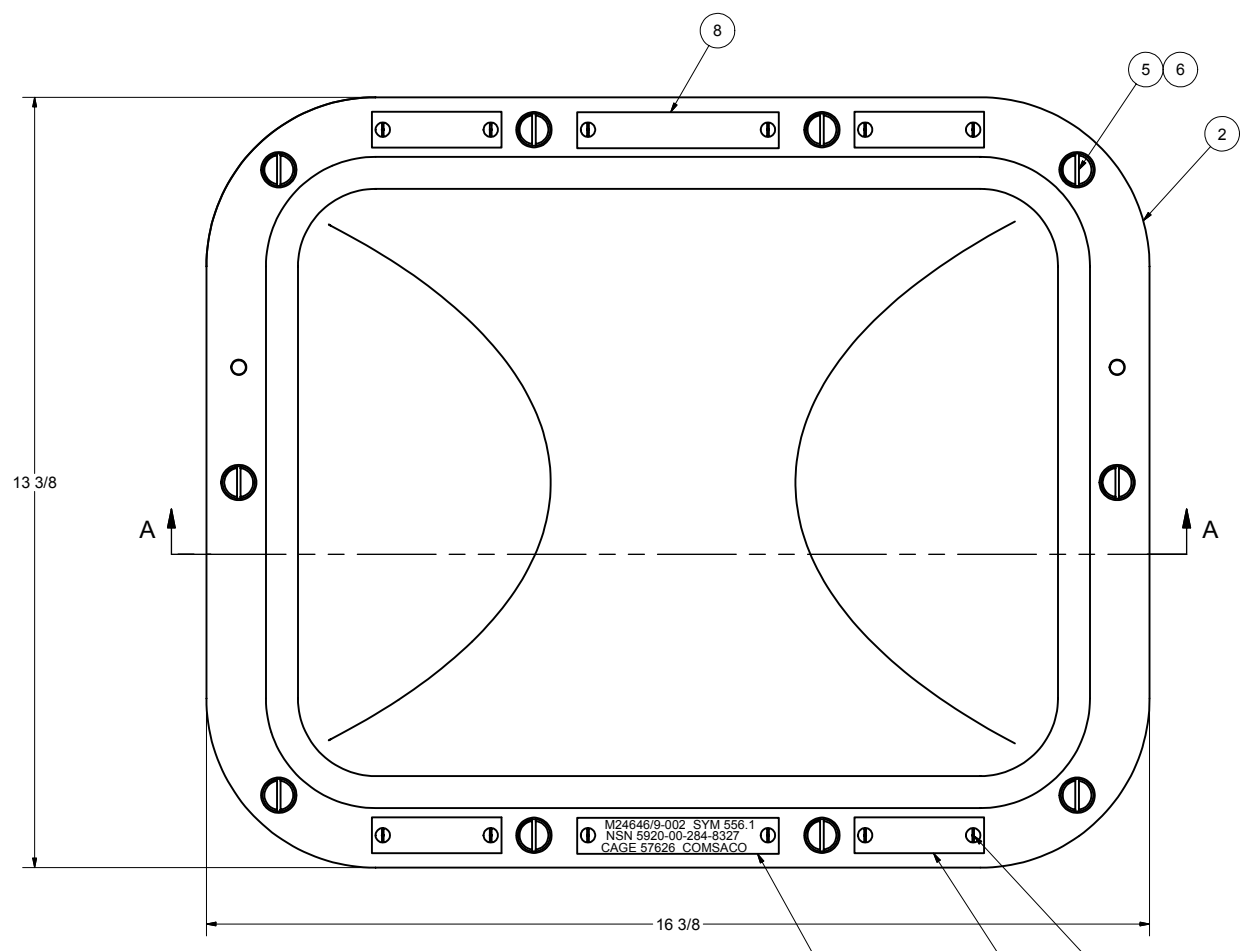
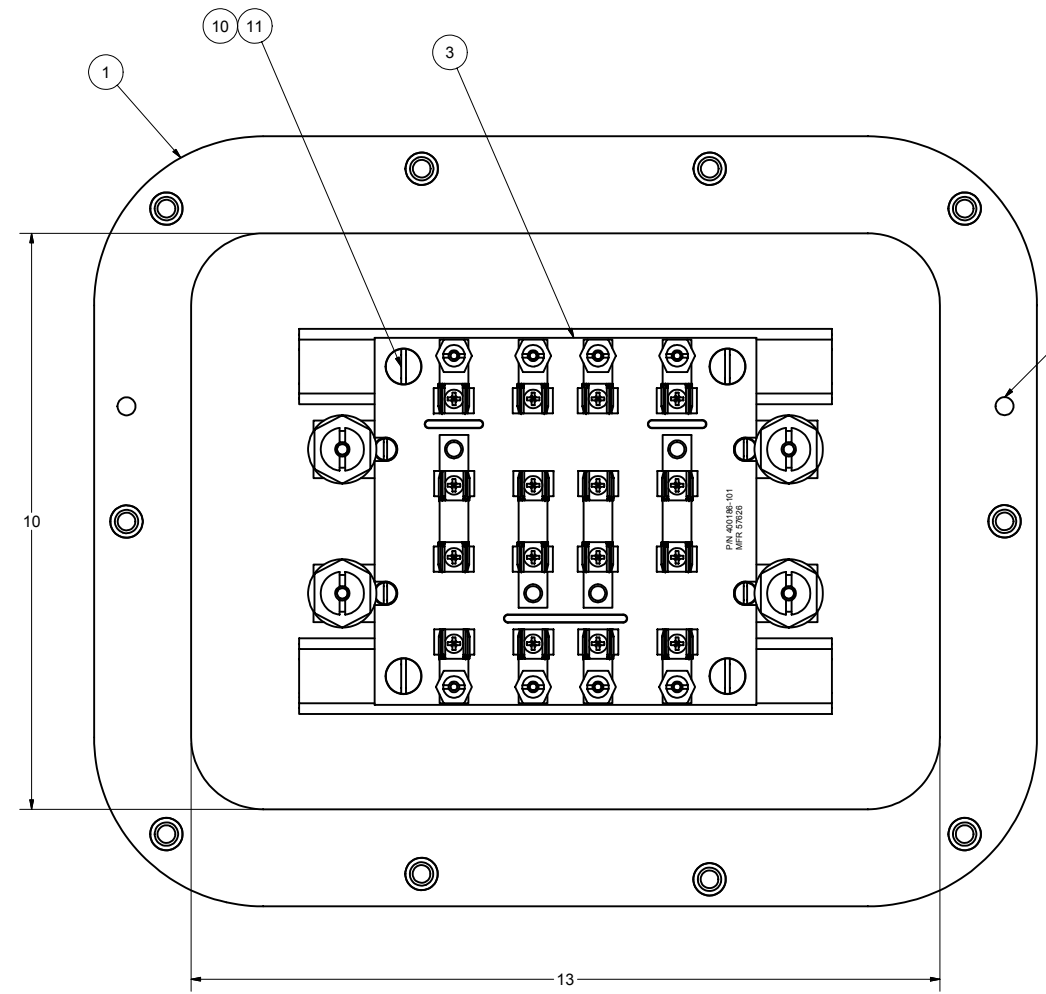


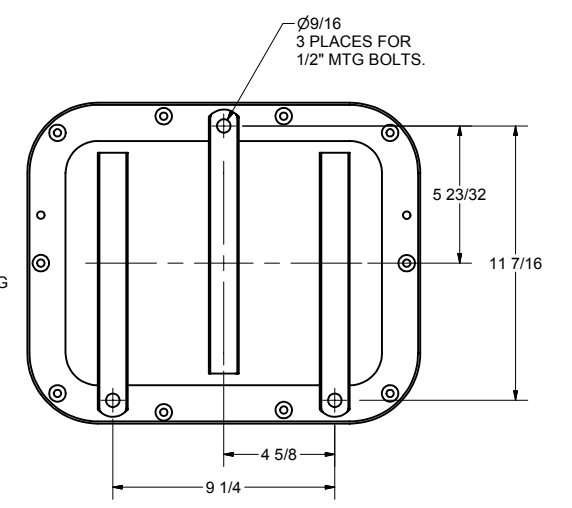
REVISIONS				
ZONE	REV	DESCRIPTION	DATE	AUTH



FRONT VIEW



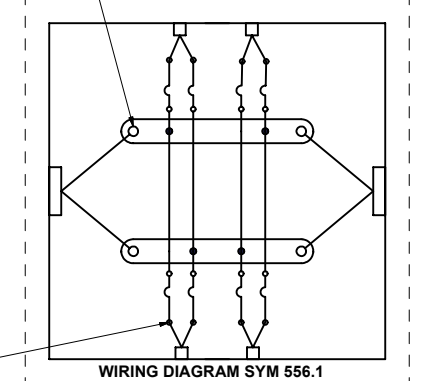
FRONT VIEW LESS COVER



BACK VIEW

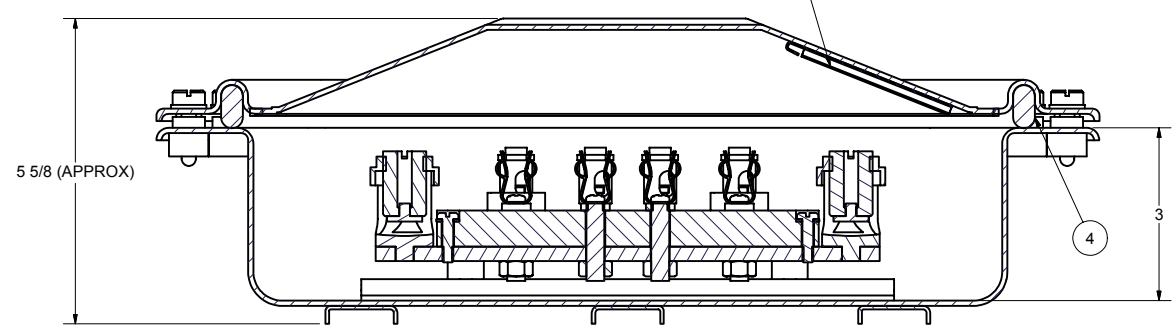
COVER POSITIONING HOLE, 2 PLACES.

MAIN TERMINALS DESIGNED ON MAX BASIS OF 200 MCM CABLE.



WIRING DIAGRAM SYM 556.1

BRANCH TERMINALS DESIGNED ON MAX BASIS OF 40 MCM CABLE.



SECTION A-A

- NOTES:
1. THIS DRAWING DEVELOPED FROM BUSHIPS DWG 9-S-74166 AND MIL-DTL-24646/9A.
 2. SPECIFICATIONS AND RATINGS:
4 CIRCUIT, 250VAC, 1 PHASE LINE, 30 AMPS MAX, FEEDER SIZE 200 MCM, BRANCH CABLE SIZE 40 MCM. USES FUSES TYPES F15 OR F61 PER MIL-PRF-15160. DEGREE OF ENCLOSURE IS 15 FT. SUBMERSIBLE.
 3. QUALITY CONFORMANCE INSPECTIONS REFERENCE MIL-F-24646A PARA. 4.4.
 4. TOTAL WEIGHT IS 26 LBS.

Parts List			
ITEM	QTY	PART NUMBER	DESCRIPTION
1	1	200373	BOX WELDMENT, BRASS, 10 X 13 X 3
2	1	200597	COVER WELDMENT, BRASS, 10 X 13, DOMED
3	1	400186-101	FUSE PANEL SUB-ASSY, 5/8" GPO3
4	1	100146-4	GASKET, COVER, RUBBER
5	10	74031-5	SCREW, COVER, BRASS, 3/8-16 X 1-1/8"
6	10	AN960B616	WASHER, FLAT, BRASS, 3/8"
7	4	74031-25	NAMEPLATE, BRASS, BLANK
8	1	100260	INFO PLATE, BRASS, BLANK
9	1	100260-556.1	INFO PLATE, BRASS, ENGRAVED
10	4	X-ILW-CRES-618	WASHER, INT TOOTH, CRES, 5/16"
11	4	X-RHM-SS-618-750	SCREW, RHM, CRES, SLOTTED, 5/16-1/8 X 3/4"
12	12	X-RHM-BRS-632-250	SCREW, RHM, BRASS, 6-32 X 1/4"
13	1	WD-SYM 556.1	WIRING DIAGRAM, LAMINATED PAPER

DRAWN	CHRIS WINDLEY	9/9/2005
CHECKED	W WESTHOFF	9/12/2005
QA		
MFG		
APPROVED		

COMSACO, INC.
NORFOLK, VA. 23502

TITLE: **FUSE PANEL, BRASS, 4 CKT, 1 PHASE, SBM, SYM 556.1**

SIZE: **D 57626** DWG NO: **404-556.1** REV: -

SCALE: SHEET 1 OF 1

UNLESS OTHERWISE SPECIFIED DIMENSIONS ARE IN INCHES
TOLERANCES ARE:
FRACTIONS DECIMALS ANGLES
+/- 1/64 .XX .XXX .005

NEXT ASSY	USED ON
-----------	---------