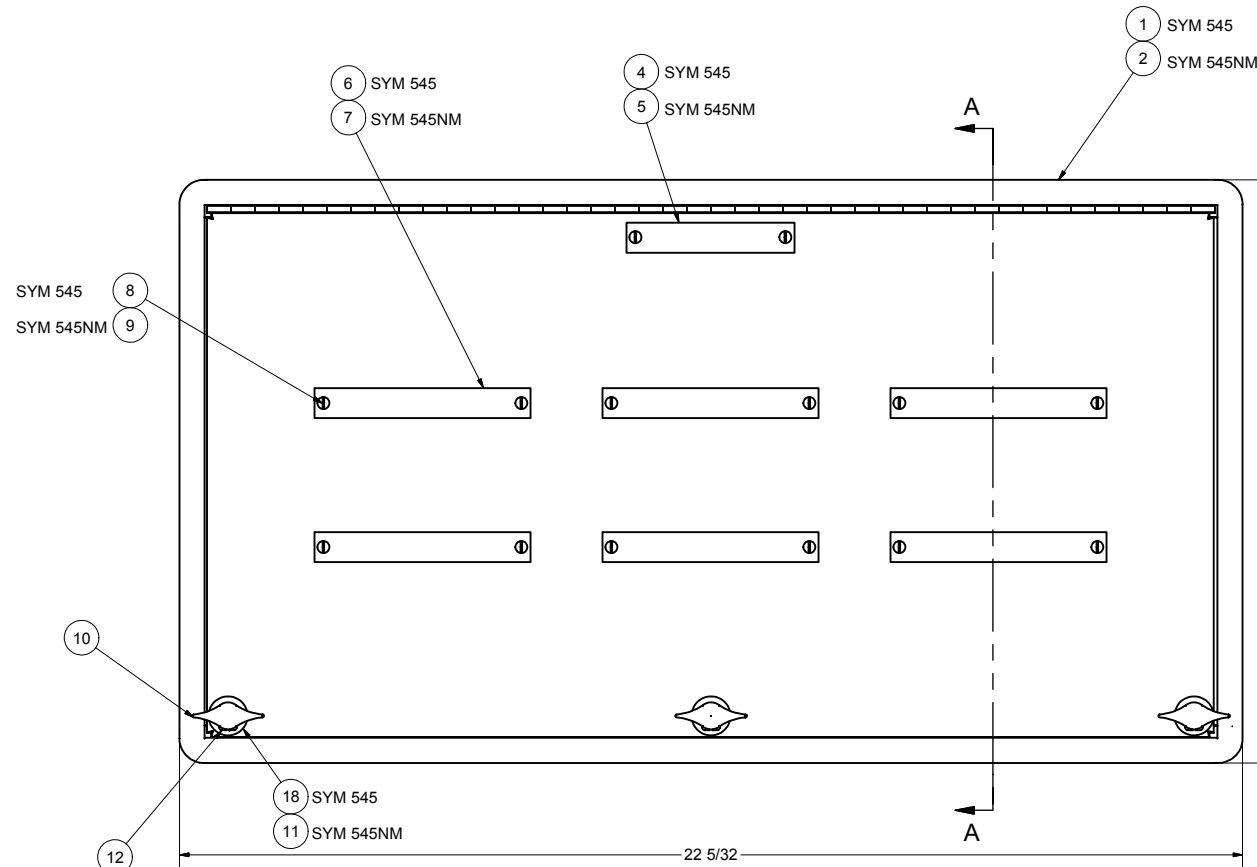
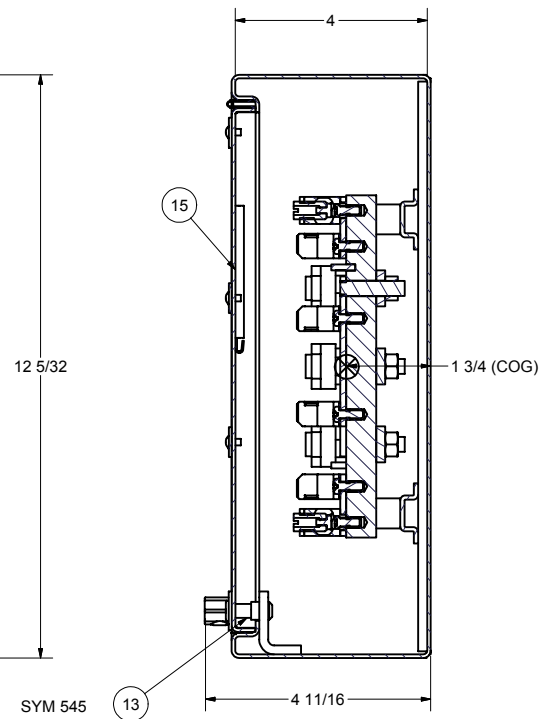


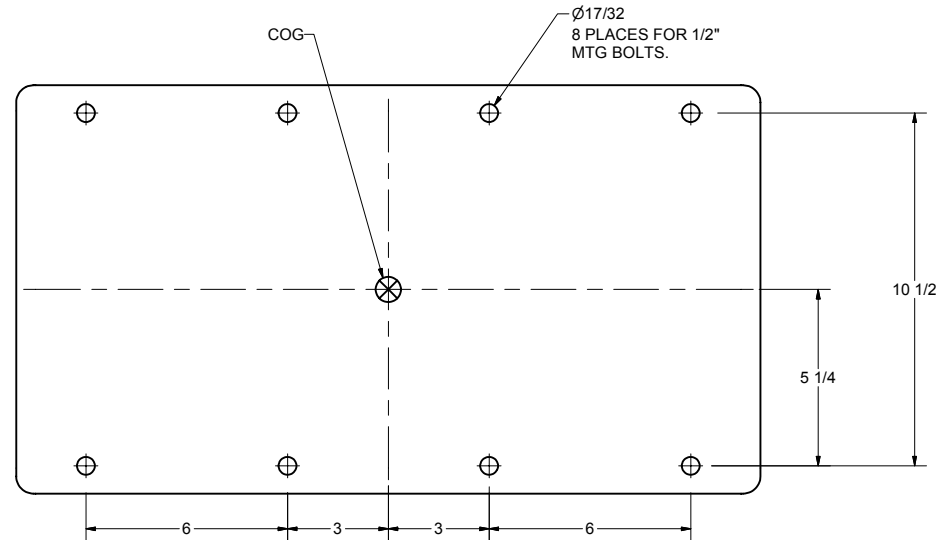
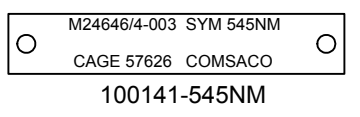
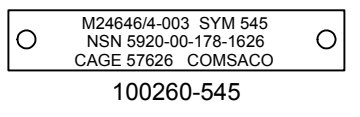
REVISIONS				
ZONE	REV	DESCRIPTION	DATE	AUTH
—	A	ADDED: REF TO MIL-F-24646/4. REVISED: NAMEPLATYE MARKING & P/N.	11/9/90	WW
—	B	ADDED: NOTES 5 & 6. ECN: 224.	12/17/92	WW
—	C	CHANGED: HANDLE WASHER & SCREW WERE ZP-STL. ADDED: NAMEPLATE DETAIL.	1/18/01	AW
—	D	CHANGED: ITEMS 16 & 17 WERE ZP-STL.	4/11/02	AW
ALL	E	ADDED: P/N SYM 545NM. REVISED: DWG INTO CAD FORMAT.	3/6/06	WW



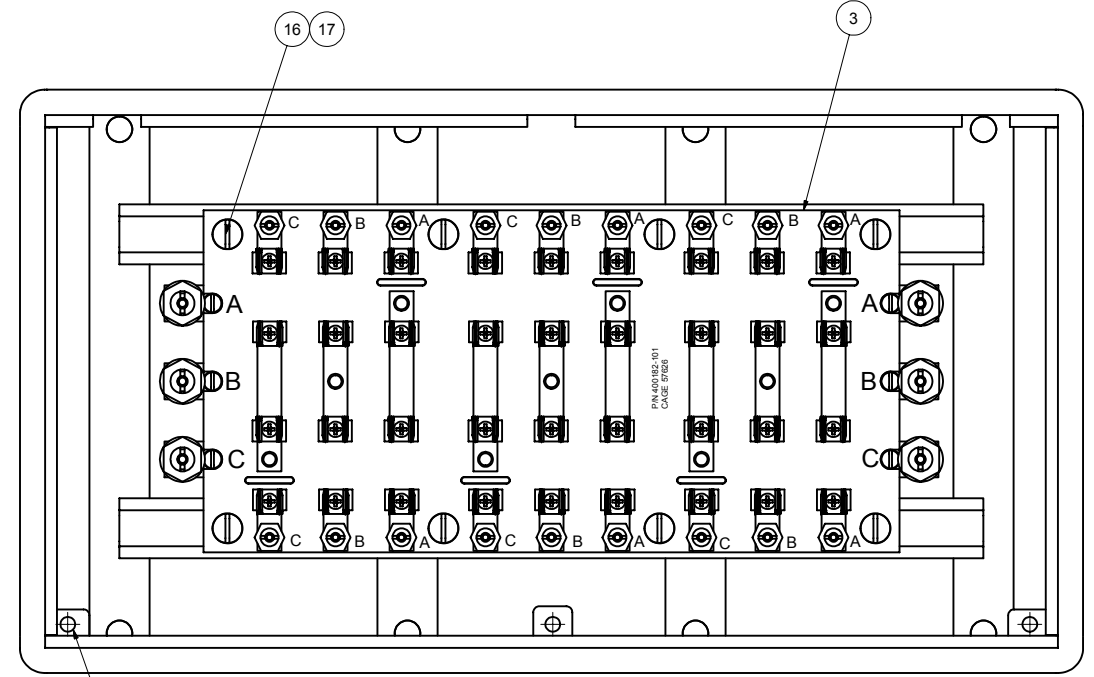
**FRONT VIEW**



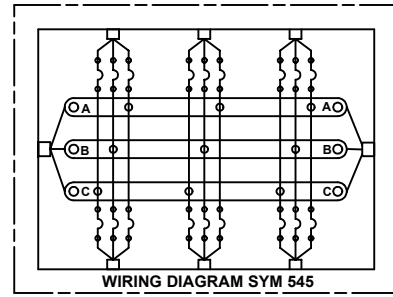
**SECTION A-A**



**BACK VIEW**



**FRONT VIEW LESS COVER**



**WIRING DIAGRAM SYM 545**

- NOTES:**
- THIS DRAWING DEVELOPED FROM MIL-DTL-24646/4A.
  - RATINGS AND SPECIFICATIONS:  
6 CIRCUIT, 450VAC, 3 PHASE LINE, 3 PHASE BRANCH, 0-30 AMP MAX.  
TOTAL CONNECTED LOAD 180AMPS MAX.  
USE FUSE TYPE F15(250V), F61(450V) PER MIL-F-15160.  
DEGREE OF ENCLOSURE IS TE (TOTALLY ENCLOSED).
  - UNLESS OTHERWISE SPECIFIED CABLE ENTRANCE DEVICES WILL BE PROVIDED AND INSTALLED BY THE INSTALLATION ACTIVITY.
  - SYM 545 HAS BEEN FIRST ARTICLE QUALIFIED PER AERO-NAV LABRATORIES, INC REPORT 2-1797 AND COMSACO,INC REPORT FA-1033 AND ACCEPTED BY SUPSHIPS NEWPORT NEWS LETTER 9072/9324 SER CVN65COH-272A/2381 DATED 02 DEC 1992.  
TESTS INCLUDED HIGH IMPACT, GRADE A, CLASS I, LIGHTWEIGHT, TYPE A, BULKHEAD MOUNTED SHOCK PER MIL-S-901C AND VIBRATION PER MIL-STD-167(1).
  - SYM 545NM HAS BEEN SHOCK AND VIBRATION QUALIFIED PER AERO-NAV LABORATORIES,INC. REPORT 1-1314-1 AND COMSACO,INC. REPORT SV-1025A AND ACCEPTED BY SUPSHIPS NEWPORT NEWS LETTER 9072 SER CVN 74/75-272A/0341 DATED 28 FEB 1994. TESTS INCLUDED HIGH IMPACT, GRADE A, CLASS I, LIGHTWEIGHT, TYPE A, HULL/DECK MOUNTED, BACK MTG PLANE, UNRESTRICTED ORIENTATION SHOCK PER MIL-S-901C(1) AND VIBRATION PER MIL-STD-167(1).
  - FINISH PER MIL-E-917.  
A) ONE COAT PRETREATMENT DOD-P-15328 PRIMER.  
B) TWO COATS MIL-E-15090, LIGHT GRAY EQUIPMENT ENAMEL.
  - TOTAL WEIGHT:  
SYM 545 IS 36 LBS.  
SYM 545NM IS 20 LBS.

QTY		Parts List			
SYM 545NM	SYM 545	ITEM	PART NUMBER	DESCRIPTION	
—	1	1	200166	ENCLOSURE WELDMENT, 14GA STEEL	
1	—	2	200306	ENCLOSURE WELDMENT, .080" ALUM	
1	1	3	400182-101	FUSE BASE SUB-ASSY, 5/8" GPO3	
—	1	4	100260-545	NAMEPLATE, BRASS, ENGRAVED	
1	—	5	100141-545NM	NAMEPLATE, ALUM, ENGRAVED	
—	6	6	74031-26	INFO PLATE, BRASS, BLANK	
6	—	7	74031-26A	INFO PLATE, ALUM, BLANK	
—	14	8	X-RHM-BRS-632-250	SCREW, RHM, BRASS, 6-32 X 1/4"	
14	—	9	X-RHM-SS-632-250	SCREW, RHM, CRES, 6-32 X 1/4"	
3	3	10	74031-57	HANDLE, BRASS	
3	—	11	X-FLW-CRES-516	WASHER, FLAT, CRES, 5/16"	
3	3	12	X-RHM-SS-024-375	SCREW, RHM, CRES, 10-24 X 3/8"	
—	3	13	100608	STUD, COVER SECURING, BRASS, 3/8-16	
3	—	14	100616	STUD, COVER SECURING, CRES, 3/8-16	
1	1	15	WD-SYM 545	WIRING DIAGRAM, LAMINATED PAPER	
8	8	16	X-RHM-SS-618-0750	SCREW, RHM, CRES, 5/16-18 X 3/4"	
8	8	17	X-ILW-CRES-618	WASHER, INT TOOTH, CRES, 5/16"	
—	3	18	74031-33	WASHER, FLAT, BRASS, 11/32" ID	

REDRAWN	CHRIS WINDLEY	2/24/2006
ORIGINAL	W WESTHOFF	6/22/1988
QA		
MFG		
APPROVED		

**COMSACO, INC.**  
NORFOLK, VA. 23502

**FUSE PANEL, 6CKT, 450VAC, 3PH/3PH, TE**

SIZE: D 57626  
CODE IDENT NO: 404-545  
DWG NO: 404-545

SCALE: SHEET 1 OF 1

UNLESS OTHERWISE SPECIFIED  
DIMENSIONS ARE IN INCHES  
TOLERANCES ARE:  
FRACTIONS DECIMALS ANGLES  
+/- 1/64 .XX .XXX .005

NEXT ASSY	USED ON
-----------	---------