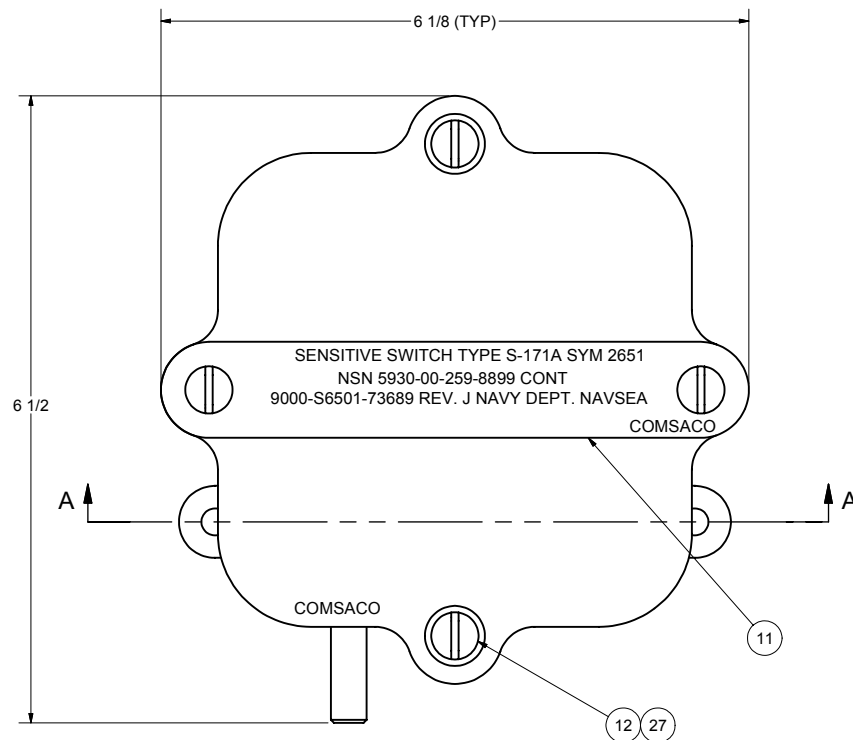
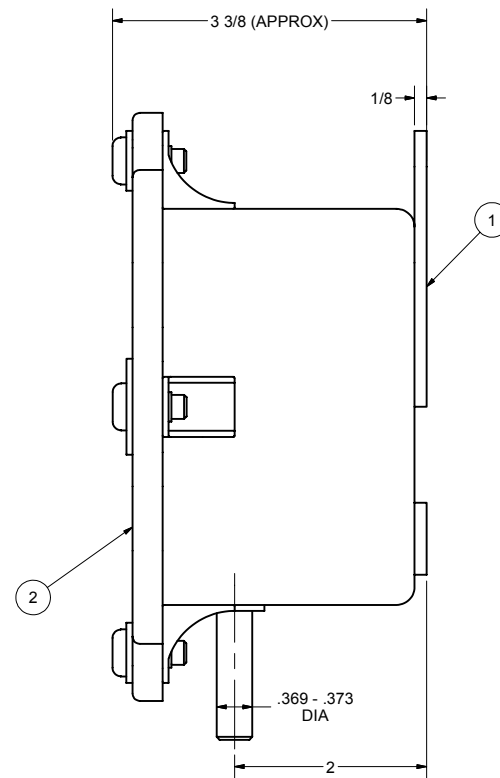


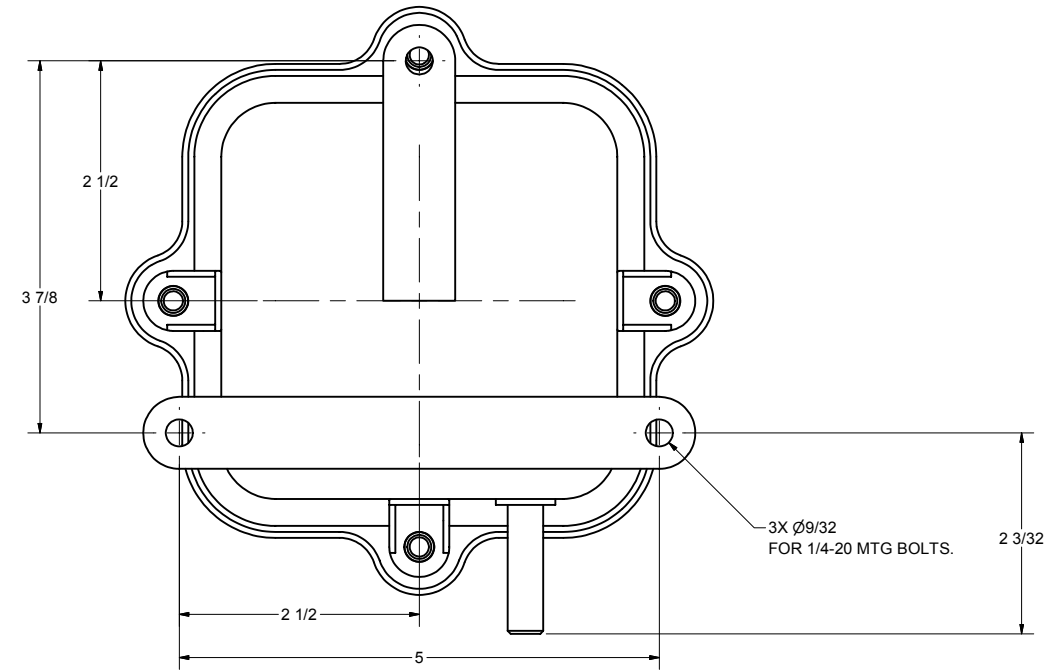
ZONE		REV	REVISIONS	DATE	AUTH
—	A		ADDED: SHAFT DIMENSIONS. CHANGED: ITEM 12 WAS 3/4" LG, ITEM 21 WAS 3/4" LG.	8/8/90	WW
ALL	B	1B	REVISED: DWG INTO CAD FORMAT. ITEM 3 WAS MS28775-427.	7/11/07	WW



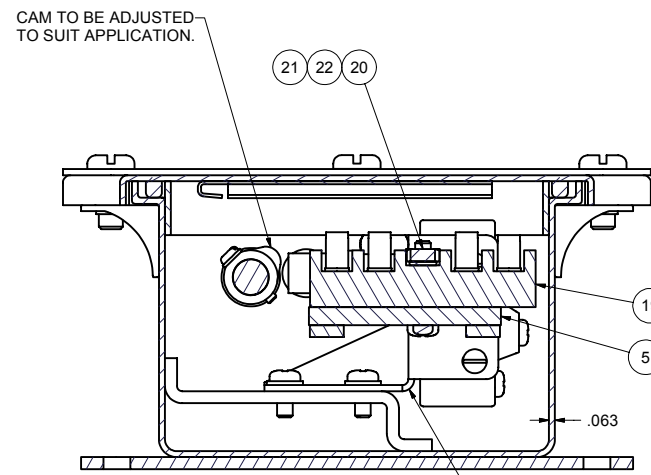
FRONT VIEW



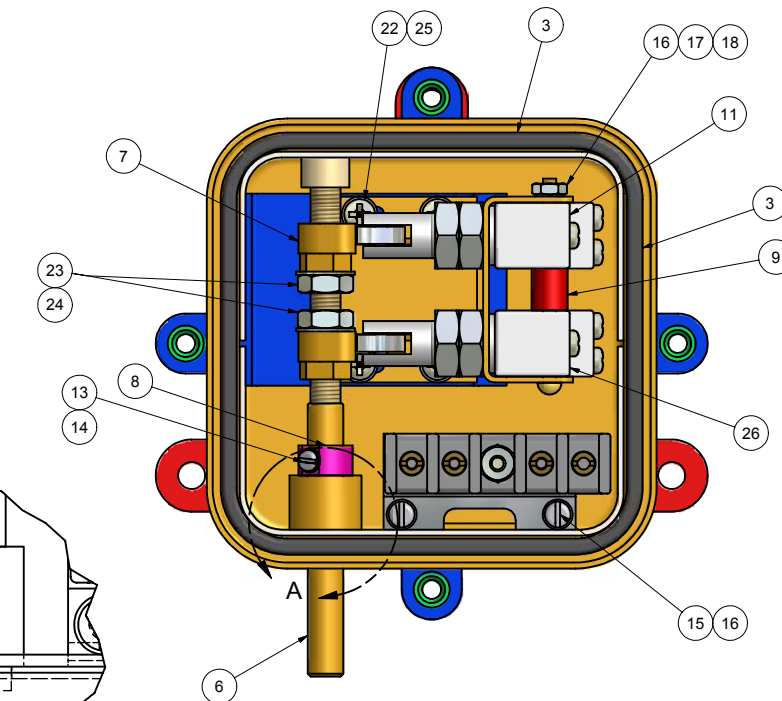
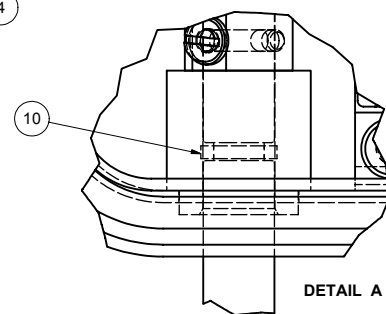
SIDE VIEW



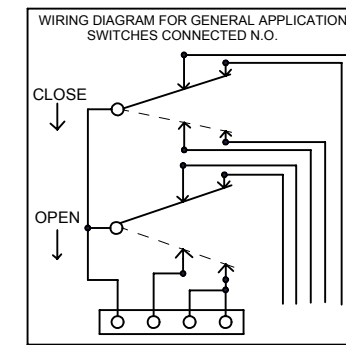
BACK VIEW



SECTION A-A



FRONT VIEW LESS COVER



Parts List				
ITEM	QTY	PART NUMBER	DESCRIPTION	
1	1	200126	BOX WEDLEMNT, BRASS,	
2	1	200200	COVER WELDMENT, BRASS,	
3	1	MS28775-351	"O" RING GASKET, RUBBER	
4	1	200149-101	BRACKET WELDMENT, BRASS	
5	1	100296	INSULATING PLATE, 1/4" LAMINATED PHENOLIC	
6	1	100197	SHAFT, CAM, CRES, 5/16-24 THREAD	
7	2	100196	CAM, BRASS, 5/16-24	
8	1	100195	COLLAR, SHAFT, BRASS	
9	2	100295	SPACER, PHENOLIC, 3/8" OD	
10	1	MS28775-010	"O" RING, RUBBER	
11	1	100294	NAMEPLATE, BRASS, ENGRAVED	
12	4	X-RHM-BRS-0420-625	SCREW, RHM, BRASS, 1/4-20 X 5/8"	
13	1	X-RHM-BRS-440-563	SCREW, RHM, BRASS, 4-40 X 9/16"	
14	1	X-ILW-PHB-4	WASHER, INT TOOTH, PHOS-BRZ, #4	
15	2	X-RHM-BRS-632-0500	SCREW, RHM, BRASS, 6-32 X 1/2"	
16	4	X-ILW-PHB-6	WASHER, INT TOOTH, PHOS-BRZ, #6	
17	2	X-RHM-BR-6332-225	SCREW, RHM, BRASS, 6-32 X 2-1/8"	
18	2	X-NUT-BRS-632	NUT, HEX, BRASS, 6-32	
19	1	9TB4	TERMINAL BOARD, 4T, 35A, 300V, A-A-59125/15	
20	1	X-NUT-BRS-832	NUT, HEX, BRASS, 8-32	
21	1	X-RHM-BRS-832-875	SCREW, RHM, BRASS, 8-32 X 7/8"	
22	5	X-ILW-PHB-8	WASHER, INT TOOTH, PHOS-BRZ, #8	
23	2	X-ILW-PHB-516	WASHER, INT TOOTH, PHOS-BRZ, 5/16"	
24	2	73689-24	NUT, JAM, BRASS, 5/16-24	
25	4	X-RHM-BRS-832-375	SCREW, RHM, BRASS, 8-32 X 3/8"	
26	2	BZ3YQ18T	SWITCH, 5A, 250VAC	
27	2	X-FLW-BRS-250	WASHER, FLAT, BRASS, 1/4"	

- NOTES:
- THIS DRAWING DEVELOPED FROM BUSHIPS DWG 9-S-73689J.
 - AT ASSEMBLY, POSITION SWITCHES SO THAT PLUNGER ROLLERS ARE 1/32" FROM LOWER PART OF CAMS.
 - APPROVED FOR MIL-S-901C GRADE A SHOCK(LIGHTWEIGHT, FIXTURE 4A) AND MIL-STD-167 TY1 VIBRATION PER SUP SHIPS NEWPORT NEWS LETTER 9072 SER SSN688CL-273A/2294 DATED 07DEC1989.

THIS DRAWING/DOCUMENT CONTAINS INFORMATION WHICH IS PROPRIETARY TO AND PROPERTY OF COMSACO, INC. IT IS DISTRIBUTED WITH THE UNDERSTANDING THAT IT WILL BE RETAINED IN CONFIDENCE AND WILL NEITHER BE DUPLICATED NOR COPIED IN WHOLE OR IN PART NOR USED FOR ANY PURPOSE OTHER THAN THAT FOR WHICH DISCLOSED WITHOUT EXPRESS WRITTEN PERMISSION FROM COMSACO, INC.

UNLESS OTHERWISE SPECIFIED DIMENSIONS ARE IN INCHES TOLERANCES ARE:
FRACTIONS DECIMALS ANGLES
+/- 1/64 .XX .XXX .005

REDRAWN
CHRIS WINDLEY 4/24/2007

ORIGINAL
W WESTHOFF 10/15/1987

QA

MFG

APPROVED

SCALE

COMSACO, INC.
NORFOLK, VA. 23502

TITLE
**SWITCH, SENSITIVE, SBM-15,
TYPE S-171A, SYM 2651**

SIZE CODE IDENT NO DWG NO REV
D 57626 404-2651 B

SHEET 1 OF 1

NEXT ASSY	USED ON
-----------	---------