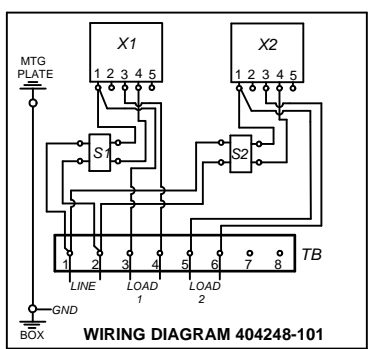
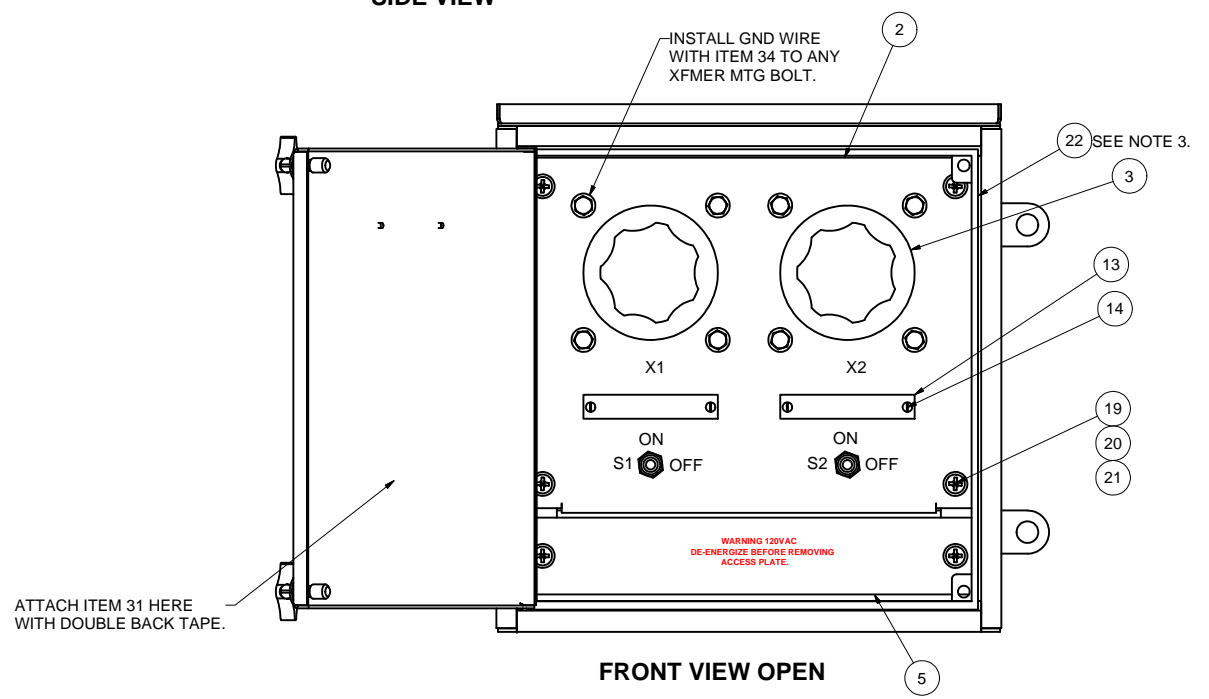
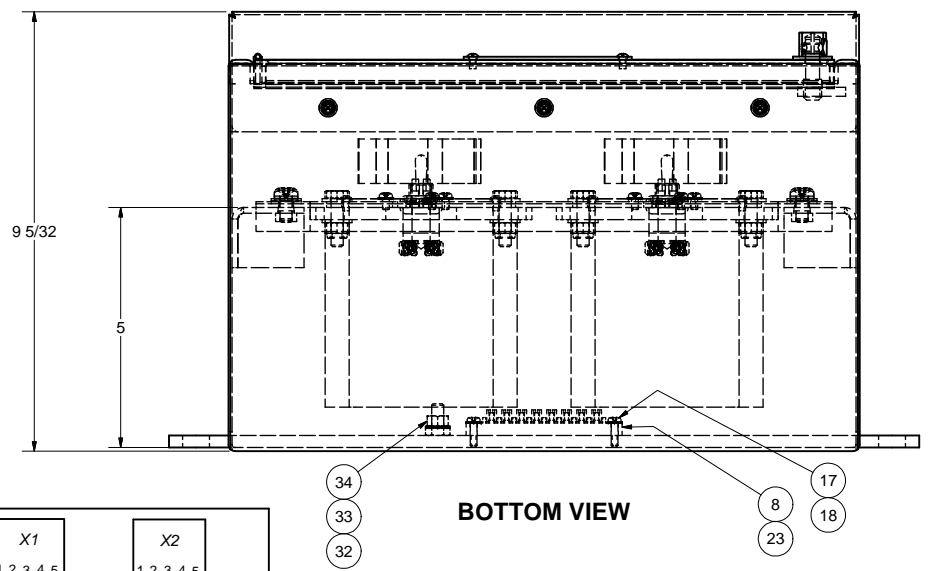
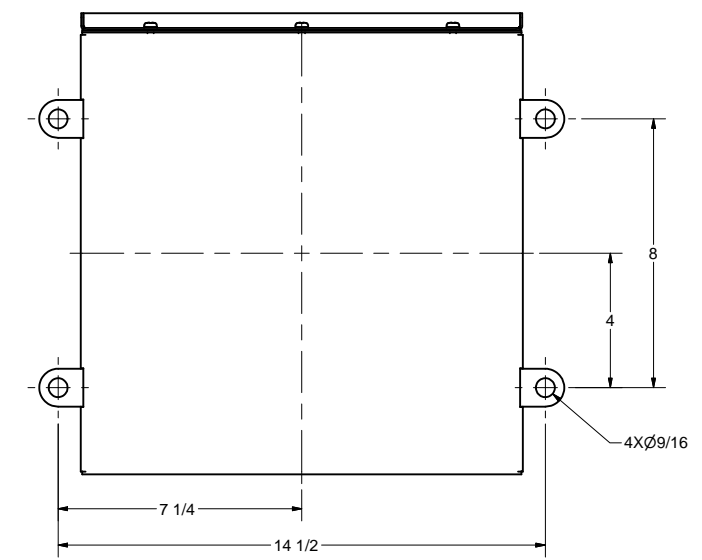
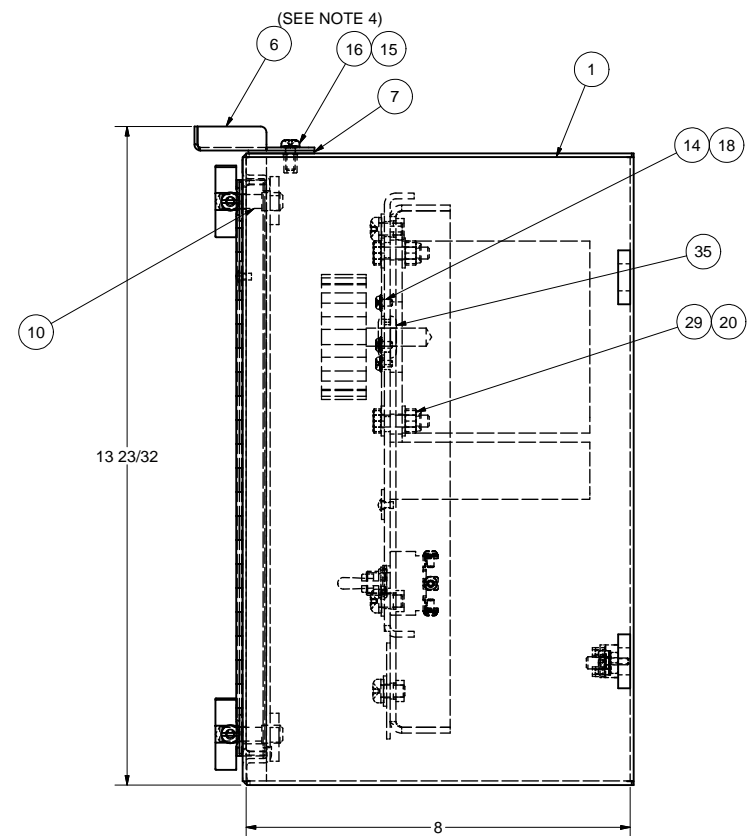
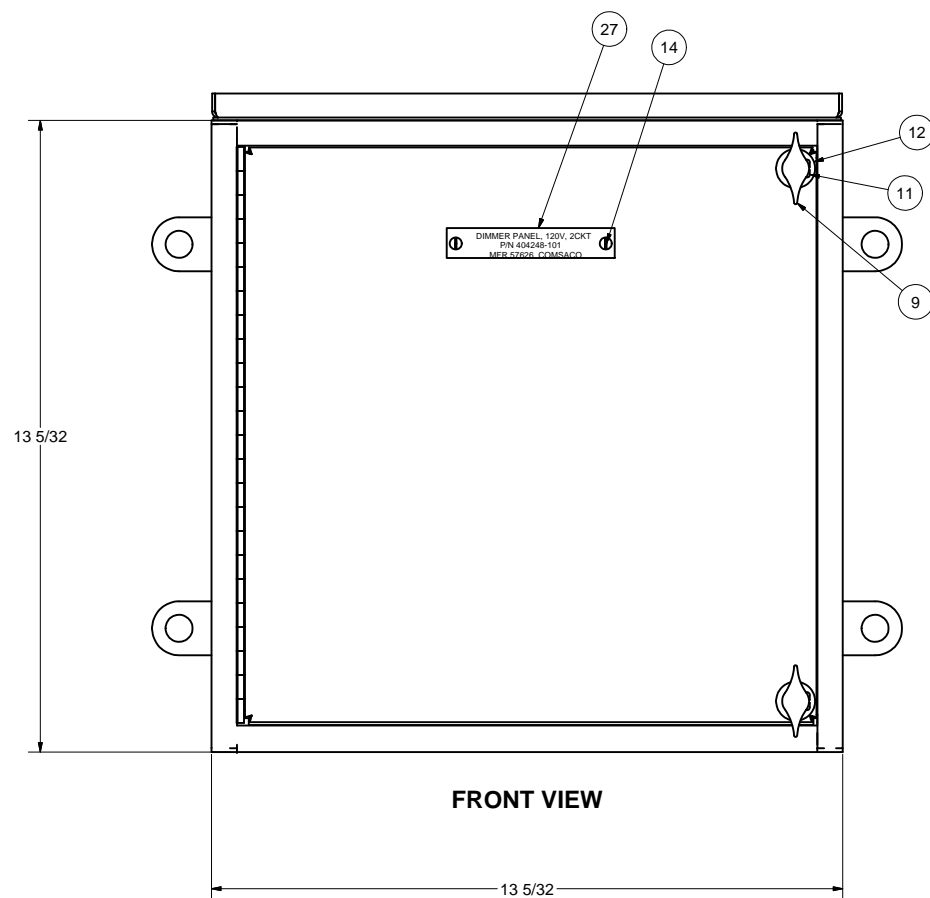


REVISIONS				
ZONE	REV	DESCRIPTION	DATE	AUTH



ASSY -101		Parts List	
ITEM	QTY	PART NUMBER	DESCRIPTION
1	1	200810	ENCLOSURE WELDMENT, 14GA CRES
2	1	101236	PLATE, COMPONENT MTG, 11GA CRES
3	2	1010B	VARIABLE TRANSFORMER, 120V, 10A
4	2	MS35059-24	SWITCH, TOGGLE, 2 POLE, 115V, 20A
5	1	101240	PLATE, ACCESS, 14GA CRES
6	1	101239-1	DRIPSHIELD, 16GA CRES
7	1	101239-2	GASKET, DRIPSHIELD, 1/16" RUBBER
8	1	26TB8	TERMINAL BOARD, DBL ROW, 300V, 30A, 8 TERM
9	2	74031-57	HANDLE, BRASS
10	2	100608	STUD, COVER HANDLE, CRES, 3/8-16
11	2	X-RHM-SS-1024-375	RHMS, CRES, 10-24 X 3/8"
12	2	X-FLWS-CRES-516	WASHER, FLAT, SEALING, CRES, 5/16"
13	2	100260-1C	INFO PLATE, CRES, BLANK
14	12	X-RHM-SS-632-250	RHMS, BRASS, 6-32 X 1/4"
15	3	X-ILW-CRES-10	WASHER, INTERNAL TOOTH, CRES, #10
16	3	X-RHM-SS-1024-500	RHMS, CRES, 10-24 X 1/2"
17	2	X-RHM-BRS-632-500	RHMS, BRASS, 6-32 X 1/2"
18	8	X-ELW-PHB-6	WASHER, EXT TOOTH, PHOS-BRZ, #6
19	6	X-RHM-SS-420-0500	RHMS, CRES, 1/4-20 X 1/2"
20	22	X-FLW-CRES-250	WASHER, FLAT, CRES, 1/4"
21	6	X-SLW-CRES-250	WASHER, SPLIT-LOCK, CRES, 1/4"
22	A/R	Z-R-TRM-0625-250	STRIP, RUBBER, 1/16" NEOPRENE
23	8	MS21004-8	TERMINAL LUG, RECT, 18-14AWG, #4 STUD
24	10'	M16878-15-BJE9	WIRE, 16GAGE, WHITE, 600V
25	16	MS25036-106	LUG, TERM, RING, 18-14AWG, #6 STUD
26	2	N1030B	BOOT, TOGGLE SW, RUBBER, M5423/02-01
27	1	100260-404248	ID PLATE, CRES, ENGRAVED
28	8	X-BLT-SS-420-1000	BOLT, HEX HEAD, CRES, 1/4-20 X 1"
29	8	X-LNUT-SS-0420	NUT, LOCK, CRES, 1/4-20
30	1	WM-404248-101	WIRE MARKER SLEEVING SET
31	1	WD-404248-101	WIRING DIAGRAM, LAMINATED PLASTIC
32	1	X-ELW-CRES-0250	WASHER, EXT TOOTH, CRES, 1/4"
33	1	X-NUT-CRES-0420	NUT, HEX, CRES, 1/4-20
34	2	MS25036-154	LUG, TERM, RING, INSL, 18-14AWG, 1/4" STUD
35	2	9307K23	GROMMET, RUBBER, 3/8" ID

- NOTES:  
1. RATINGS AND SPECIFICATIONS:  
2 CIRCUIT, 120VAC, 10 AMP MAX. PER CIRCUIT.  
DEGREE OF ENCLOSURE PER MIL-STD-108E: DRIPPROOF 15 DEGREES.  
2. TOTAL WEIGHT: 50 LBS ESTIMATED.  
3. INSTALL PUSH-ON RUBBER STRIP WITH ADHESIVE.  
4. APPLY RTV SEALANT TO THREADS OF SCREWS WHEN INSTALLING.

THIS DRAWING/DOCUMENT CONTAINS INFORMATION WHICH IS PROPRIETARY TO AND PROPERTY OF COMSACO, INC. IT IS DISTRIBUTED WITH THE UNDERSTANDING THAT IT WILL BE RETAINED IN CONFIDENCE AND WILL NEITHER BE DUPLICATED NOR COPIED IN WHOLE OR IN PART NOR USED FOR ANY PURPOSE OTHER THAN THAT FOR WHICH DISCLOSED WITHOUT EXPRESS WRITTEN PERMISSION FROM COMSACO, INC.

UNLESS OTHERWISE SPECIFIED DIMENSIONS ARE IN INCHES TOLERANCES ARE:  
FRACTIONS DECIMALS ANGLES  
+/- 1/64 .XX .XXX .005

DRAWN CHRIS WINDLEY	10/17/2006	<b>COMSACO, INC.</b> NORFOLK, VA. 23502 <b>TITLE</b> DIMMER PANEL, CRES, DRIPPROOF, 120VAC, 10A, (2) CIRCUIT SIZE CODE IDENT NO DWG NO D 57626 404248 SCALE SHEET 1 OF 1
CHECKED W WESTHOFF	10/25/2006	
MFG		
APPROVED		

NEXT ASSY	USED ON
-----------	---------