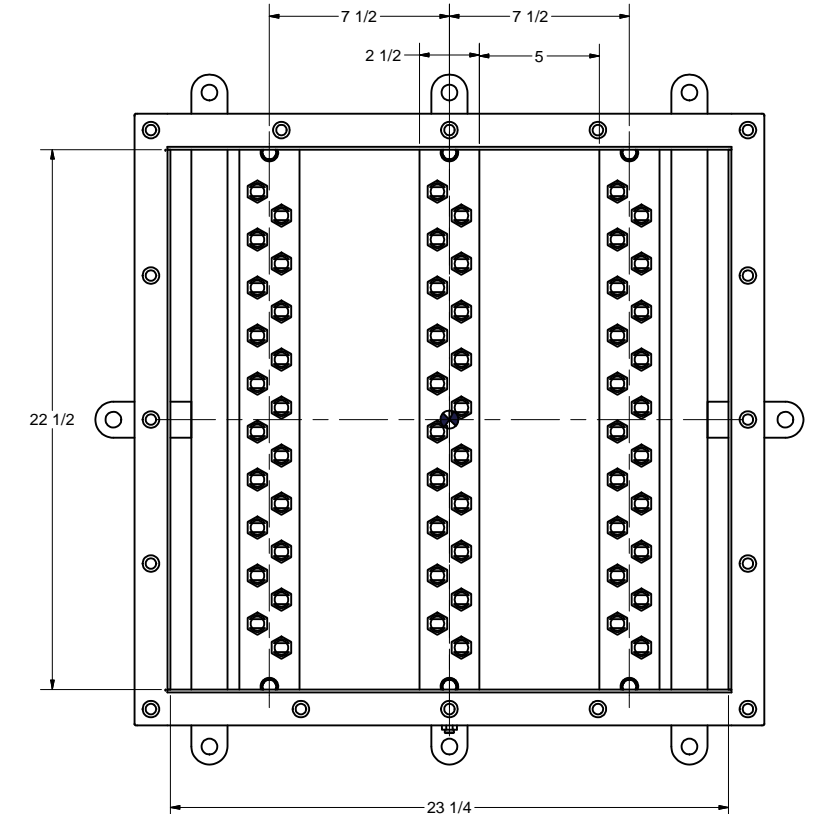
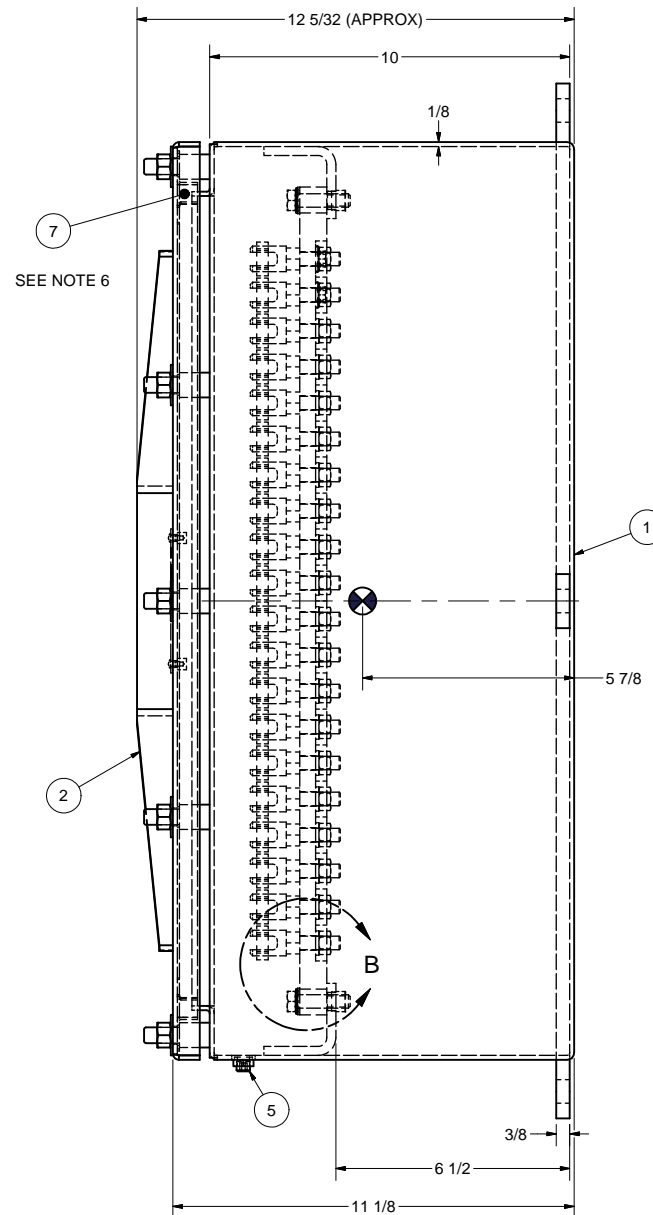
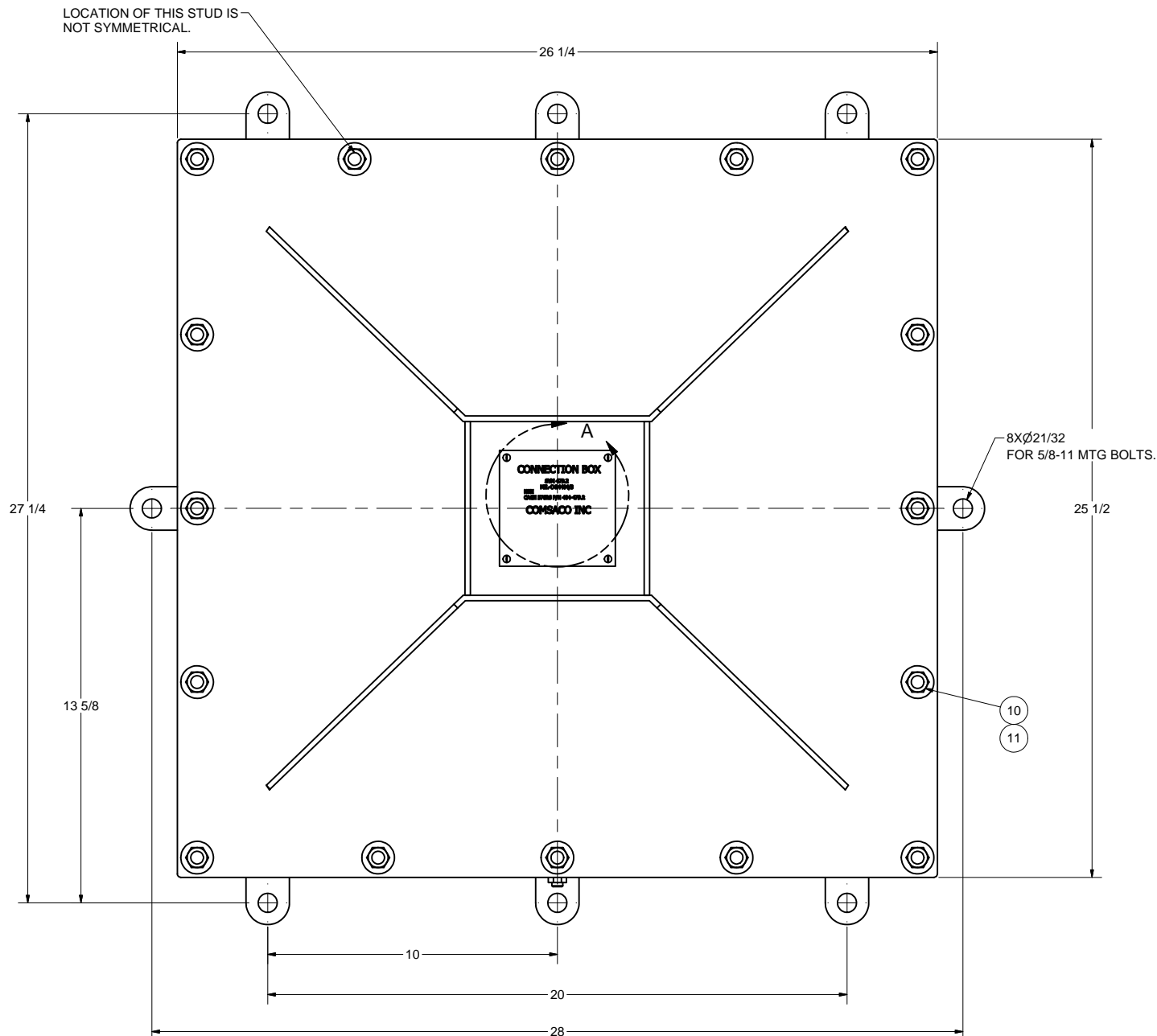
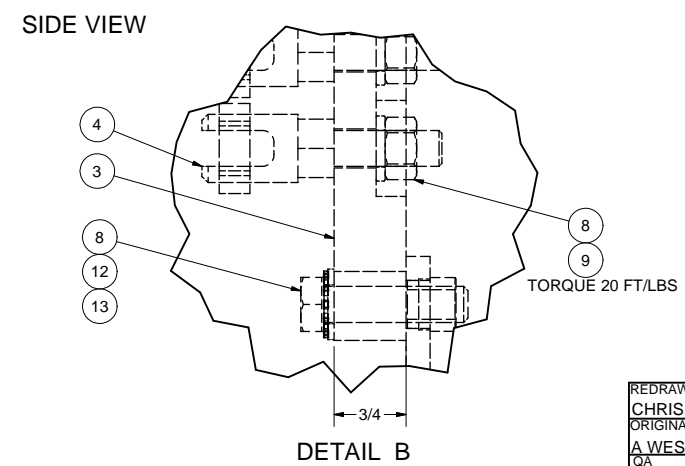


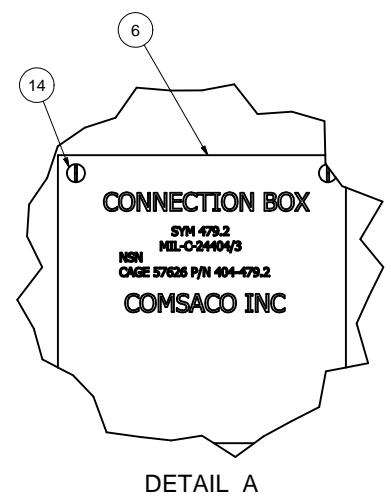
ZONE		REV		REVISIONS		DATE	AUTH
				DESCRIPTION			
ALL	A			REVISED: DWG INTO CAD FORMAT, NAMEPLATE VIEW.		7/25/14	RLF
				AUTH: MFR REQ. & ECO 1273.			



FRONT VIEW LESS COVER



DETAIL B



DETAIL A

FRONT VIEW

SIDE VIEW

- NOTES:
- TOTAL WEIGHT IS 130 LBS (EST).
 - ELECTRICAL RATING IS 250V, FOR 60 TERMINALS FOR A MAXIMUM OF 120 CABLES 14,000 TO 60,090 CM. (8-2 AWG)
 - UNLESS OTHERWISE SPECIFIED CABLE ENTRANCE DEVICES WILL BE PROVIDED BY THE INSTALLING ACTIVITY.
 - MANUFACTURED TO MEET THE FOLLOWING TESTS PER MIL-C-24404:
 - DIELECTRIC STRENGTH TESTED AT 1500V BETWEEN LIVE PARTS AND GROUND. (4.5.1)
 - INSULATION RESISTANCE TESTED AT 500V BETWEEN ELECTRICAL CONDUCTORS AND GROUND. (4.5.2)
 - TEMPERATURE RISE (4.5.3)
 - HIGH IMPACT SHOCK TEST, LIGHTWEIGHT, GRADE A, CLASS I, TYPE A PER MIL-DTL-901D. (4.5.4)
 - VIBRATION TEST, TYPE I, 4-33 HZ, PER MIL-STD-167-1. (4.5.5)
 - SALT SPRAY TEST PER MIL-STD-202 METHOD 101C. (4.5.6)
 - EFFECTIVENESS OF ENCLOSURE, SUBMERSIBLE 15 FEET, PER MIL-STD-108. (4.5.7)
 - FINISH AS FOLLOWS:
 - PRIME WITH ZINC-MOLYBDATE PER TT-P-645.
 - PAINT EXTERIOR WITH LIGHT GRAY ENAMEL.
 - PAINT INTERIOR WITH WHITE ENAMEL.
 - COVER GASKET MADE FROM FOUR PIECES OF ITEM 7. FORCE FIT INTO COVER GASKET RETAINERS, APPLY 3M SCOTCH-GRIP RUBBER ADHESIVE 1300 OR EQUAL AT JOINTS.
 - THIS DRAWING DEVELOPED FROM MIL-C-24404 AND MIL-C-24404/3.

Parts List			
ITEM	QTY	PART NUMBER	DESCRIPTION
1	1	200223	BOX WELDMENT, 11GA STEEL,
2	1	200224	COVER WELDMENT, 11GA STEEL
3	3	100256-2	TERMINAL STRIP, 3/4" THICK GME
4	60	DGM-6L	LUG, CABLE, BRONZE, 8-2AWG
5	1	73142-30	PLUG, PIPE, BRASS, 1/8" NPT, 3/16" HEX
6	1	100244-3	ID PLATE, BRASS, ENGRAVED, SYM 479.2
7	9'	Z-R-SQR-0500-R900	RUBBER STRIP, 1/2" X 1/2", PER MIL-R-900
8	66	X-ELW-CRES-375	WASHER, EXT TOOTH, CRES, 3/8"
9	60	X-NUT-CRES-816	HEX NUT, CRES, 3/8-16
10	16	X-NUT-CRES-716-14	HEX NUT, CRES, 7/16-14
11	16	X-FLW-CRES-716	WASHER, FLAT, CRES, 7/16"
12	6	X-BLT-SS-816-1.50	BOLT, HEX HD, CRES, 3/8-16 X 1-1/2"
13	6	X-FLW-CRES-375	WASHER, FLAT, CRES, 3/8"
14	4	X-RHM-BRS-632-250	SCREW, RHM, BRASS, 6-32 X 1/4"

REDRAWN	CHRIS WINDLEY	7/24/2014
ORIGINAL	A WESTHOFF	3/5/2003
QA		
MFG		
APPROVED		

COMSACO, INC. NORFOLK, VA. 23502	
DEGAUSSING CONNECTION BOX, STEEL, SYM 479.2	
SIZE	CODE IDENT NO
D 57626	404-479.2
SCALE	SHEET 1 OF 1

UNLESS OTHERWISE SPECIFIED
DIMENSIONS ARE IN INCHES
TOLERANCES ARE:
FRACTIONS DECIMALS ANGLES
+/- 1/64 .XX .XXX .005

NEXT ASSY	USED ON
-----------	---------