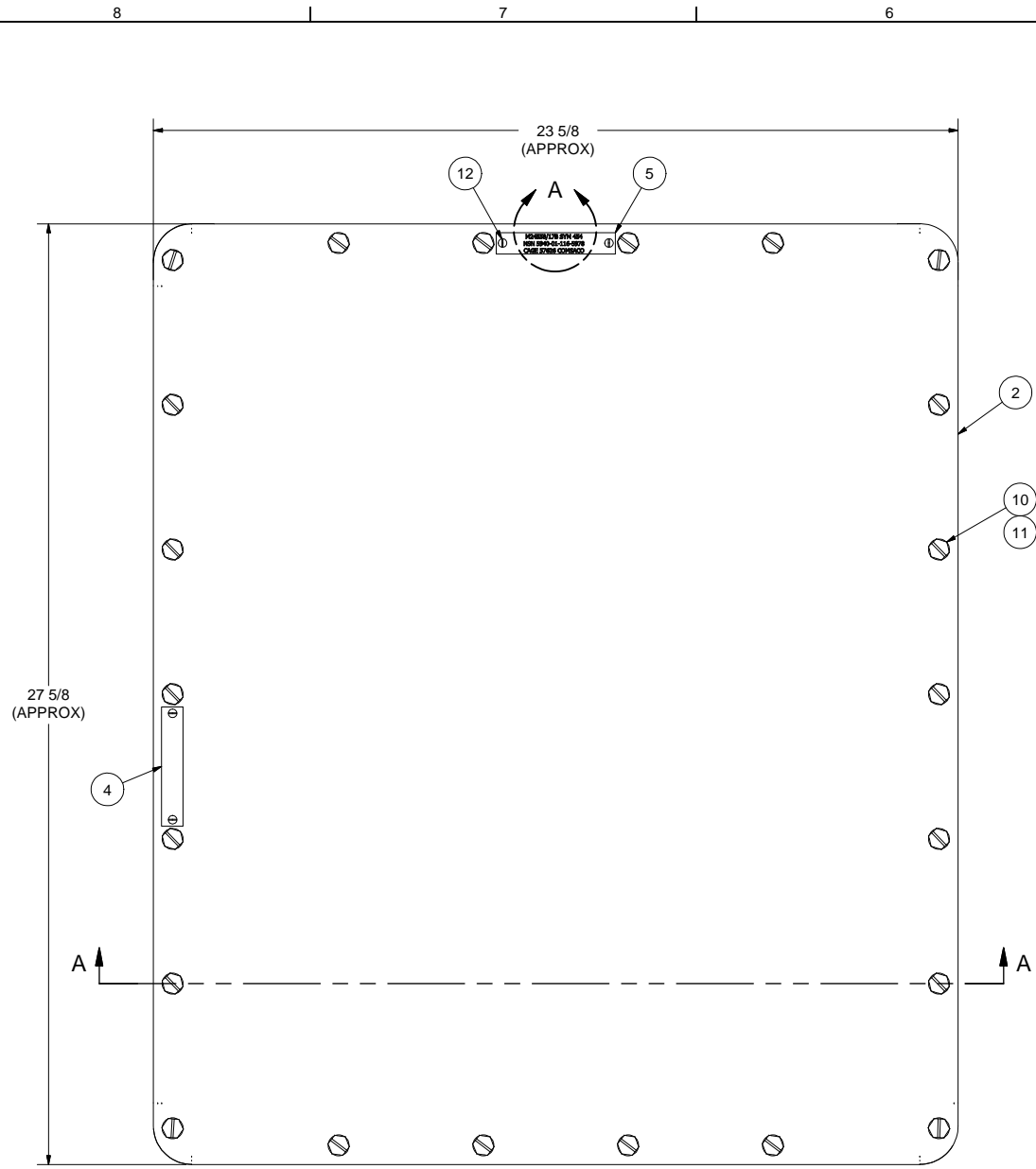


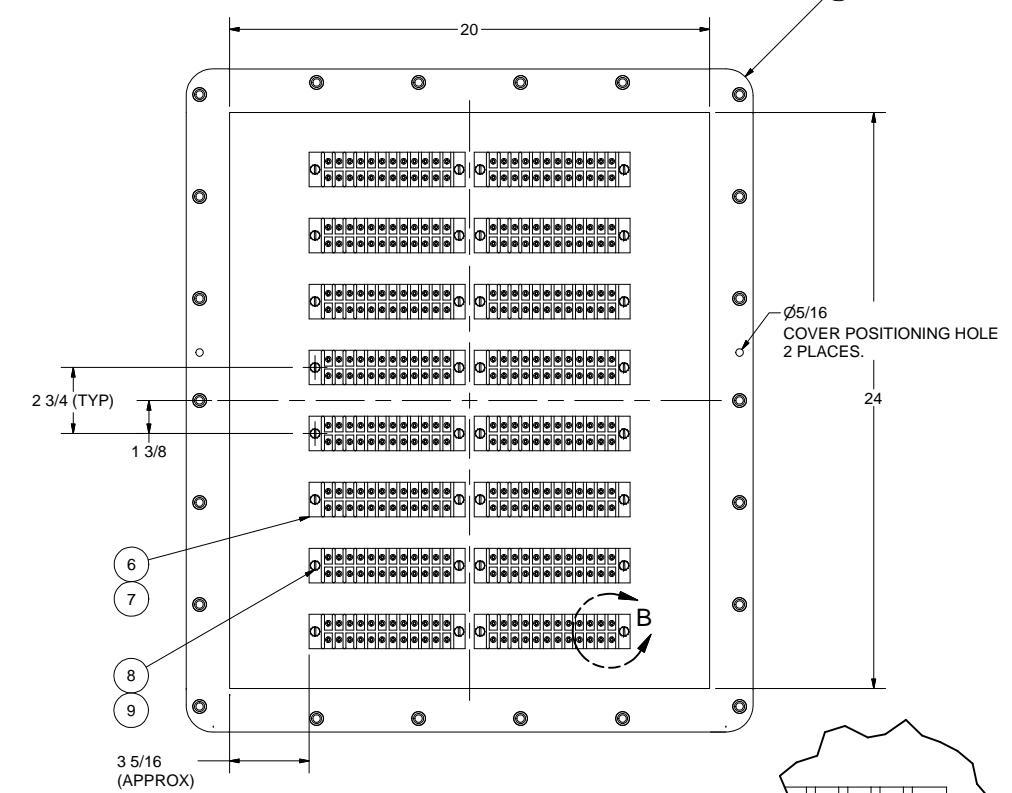
REVISIONS				
ZONE	REV	DESCRIPTION	DATE	AUTH
ALL	A	REVISED: DWG INTO CAD FORMAT. AUTH: ADMIN REQUIREMENTS.	1/29/14	AW



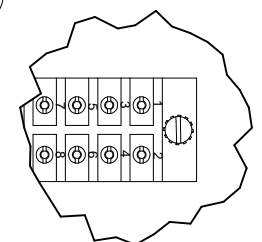
FRONT VIEW

M24558/17B SYM 454
NSN 5940-01-116-5978
CAGE 57626 COMSACO

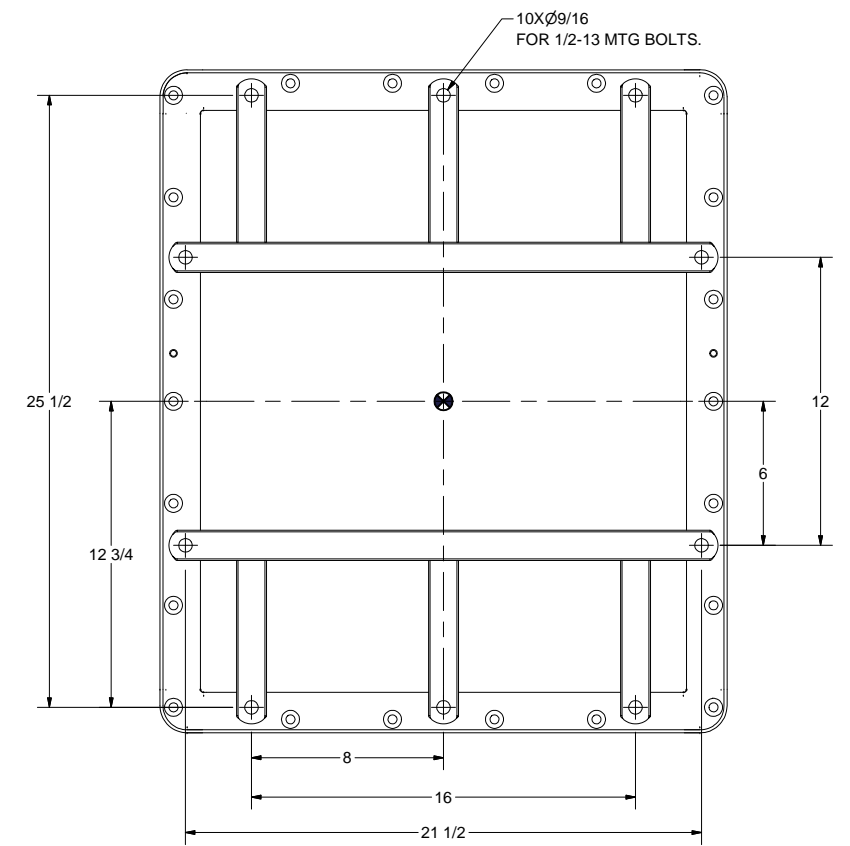
DETAIL A



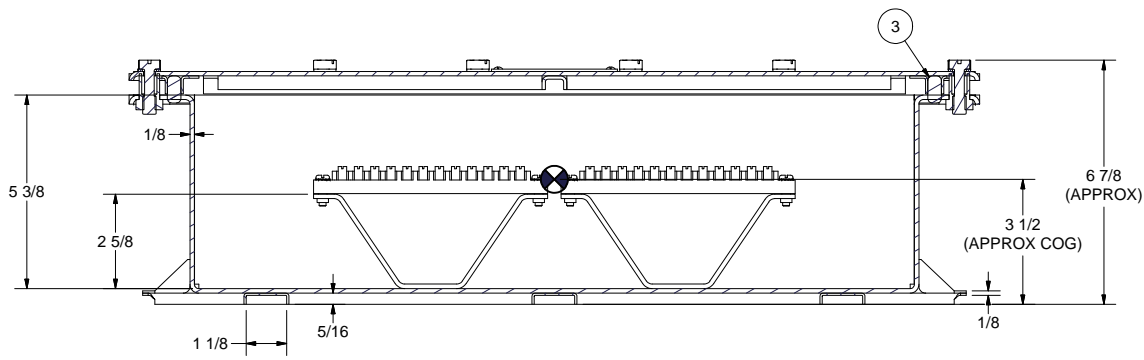
FRONT VIEW LESS COVER



DETAIL B



BACK VIEW



SECTION A-A

- NOTES:
- THIS DRAWING DEVELOPED FROM MIL-DTL-24558/17B.
 - RATINGS AND SPECIFICATIONS:
 - A) 600 VOLTS, 30 AMPS MAXIMUM PER STUD OF TERMINAL BOARD.
 - B) 384 TERMINALS, 1,152 WIRES MAX.
 - C) DEGREE OF ENCLOSURE: SUBMERSIBLE TO 15 FEET (SBM-15) PER MIL-STD-108.
 - D) MAGNETIC PERMEABILITY: LESS THAN 2.0 FERROUS MATERIALS: NONE.
 - E) WEIGHT: 94LBS MAX.
 - UNLESS OTHERWISE SPECIFIED, CABLE ENTRANCE DEVICES WILL BE PROVIDED AND INSTALLED BY THE INSTALLING ACTIVITY.
 - TERMINAL BOARDS ARE MOLDED BARRIER STUD TYPE, CLASS 6TB PER A-A-59125/12, MAXIMUM LUGS PER STUD IS 3, BU-SHIPS TYPE L81. STUDS ARE 6-32.
 - SYMBOL 454 HAS RECEIVED SHOCK AND VIBRATION EXTENSION APPROVAL THOUGH TESTING OF SYMBOL 452. APPROVED BY SUPERVISOR OF SHIPBUILDING PASCAGOULA PER LETTERS LHD-1/9072 SER 272C/102 DATED 2 OCT 1987 FOR SHOCK AND LHD-1/9073 SER 272C/106 DATED 13 NOV 1987 FOR VIBRATION.
 - A) SHOCK PER MIL-S-901C: LIGHTWEIGHT HIGH IMPACT, GRADE A, CLASS I, TYPE A, BULKHEAD MOUNTED, BACK MTG PLANE, UNRESTRICTED ORIENTATION.
 - B) VIBRATION PER MIL-STD-167 TYPE I, EXPLORATORY AND ENDURANCE UP TO 50HZ.
 - C) EFFECTIVENESS OF ENCLOSURE PER MIL-STD-108. (SBM-15FT)
 - BARREL NUTS FOR TERMINAL BOARDS TO BE PACKAGED SECURELY AND SHIPPED LOOSE INSIDE ENCLOSURE.
 - FINISH: INTERIOR ONLY WITH WHITE ENAMEL.

Parts List			
ITEM	QTY	PART NUMBER	DESCRIPTION
1	1	200130-101	BOX WELDMENT, BRASS, 20X24, M24142/7
2	1	200127-102	COVER WELDMENT, BRASS, 20X24, M24142/7
3	1	100146-15	GASKET, RUBBER, 20X24 ENCL
4	1	100260-1	INFO PLATE, BRASS, BLANK
5	1	100260-454	ID PLATE, BRASS, ENGRAVED
6	16	6TB24	TERMINAL BOARD, 24T, 30A, 600V, DBL ROW
7	16	101250-3-24	BARREL NUT KITS, BRASS, 6-32
8	32	X-RHM-CRES-1024-750	SCREW, RHM, CRES, 10-24 X 3/4"
9	32	X-ELW-CRES-10	WASHER, EXT TOOTH, CRES, #10
10	22	100215	BOLT, COVER, BRASS, 3/8-16 X 1-1/4", SLOTTED
11	22	AN960B616	WASHER, FLAT, BRASS, 3/8"
12	4	X-RHM-BRS-632-250	SCREW, RHM, BRASS, 6-32

THIS DRAWING/DOCUMENT CONTAINS INFORMATION WHICH IS PROPRIETARY TO AND PROPERTY OF COMSACO, INC. IT IS DISTRIBUTED WITH THE UNDERSTANDING THAT IT WILL BE RETAINED IN CONFIDENCE AND WILL NEITHER BE DUPLICATED NOR COPIED IN WHOLE OR IN PART NOR USED FOR ANY PURPOSE OTHER THAN THAT FOR WHICH DISCLOSED WITHOUT EXPRESS WRITTEN PERMISSION FROM COMSACO, INC.

UNLESS OTHERWISE SPECIFIED DIMENSIONS ARE IN INCHES TOLERANCES ARE:
FRACTIONS DECIMALS ANGLES
+/- 1/64 .XX .XXX .005

REDRAWN
CHRIS WINDLEY 12/13/2013
ORIGINAL
W WESTHOFF 12/15/1987
QA
MFG
APPROVED

COMSACO, INC.
NORFOLK, VA. 23502

TITLE
**TERMINAL BOX ASSY, BRASS,
20 X 24, SYM 454**

SIZE CODE IDENT NO DWG NO REV
D 57626 404-454 A

SCALE SHEET 1 OF 1

P/N	USED ON