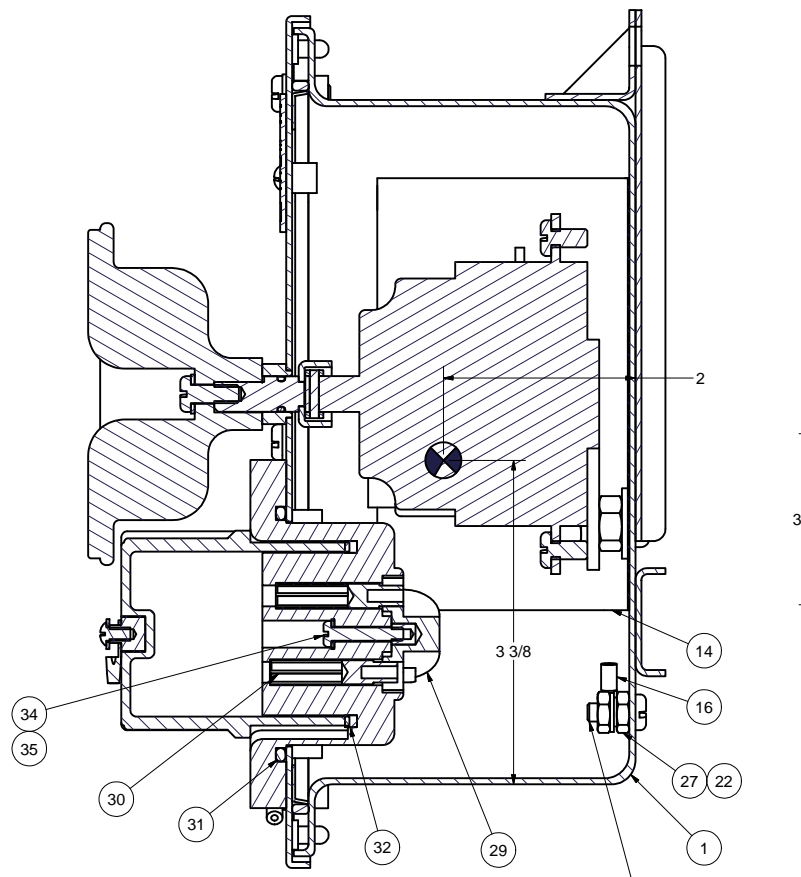
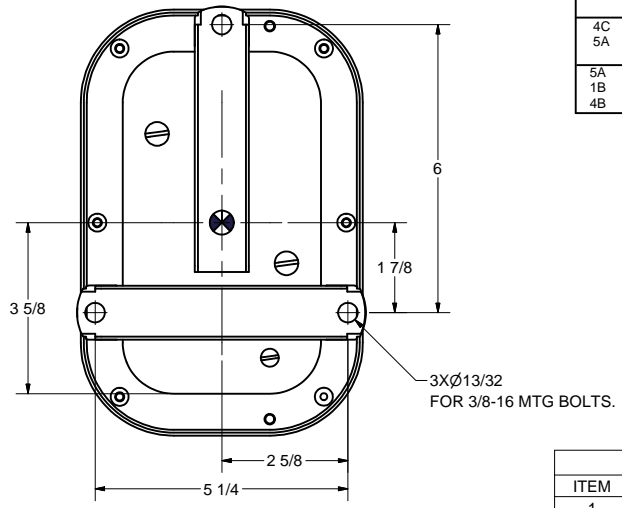


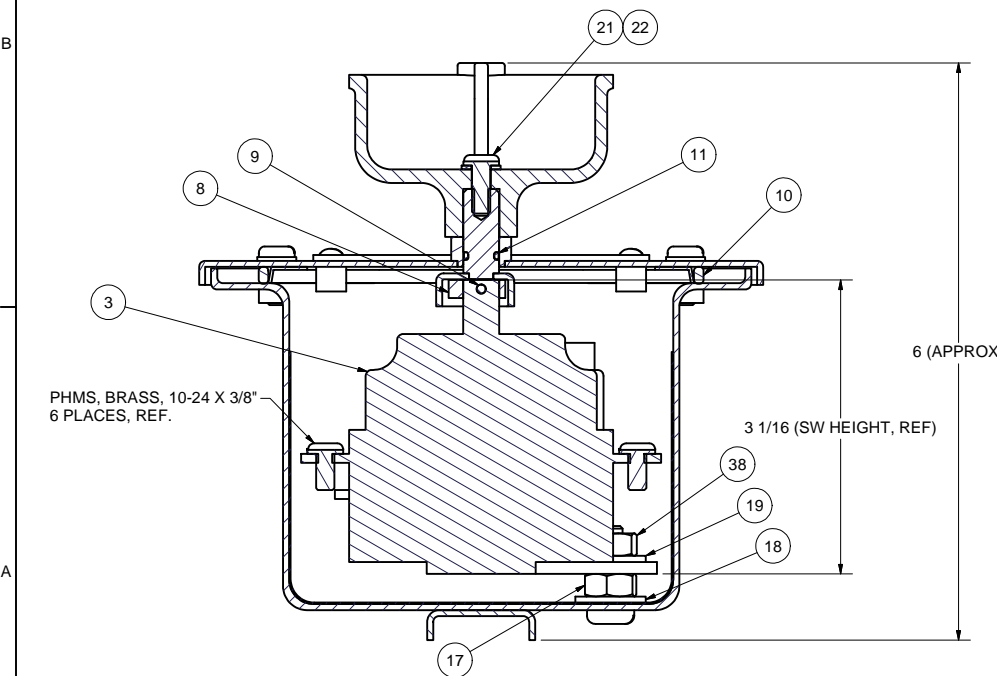
FRONT VIEW



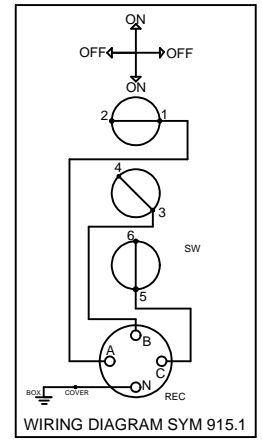
SECTION A-A
(WIRING NOT SHOWN FOR CLARITY)



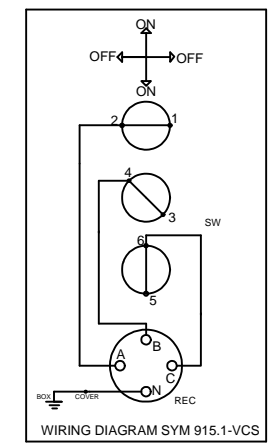
BACK VIEW



SECTION B-B



ITEM 26



*ITEM 39 (FOR SYM 915.1-VCS ONLY)

- NOTES:
1. THIS DRAWING DEVELOPED FROM MIL-DTL-2726/19B.
 2. RECEPTACLE PLUG USED WITH THIS UNIT IS SYM 717.1 PER MIL-R-2726/3C.
 3. PLUG AND HANDLE ARE INTERLOCKED TO PREVENT INSERTION OR REMOVAL WHEN SWITCH IS "ON".
 4. EFFECTIVENESS OF ENCLOSURE: WATERTIGHT PER MIL-STD-108E(1).
 5. ELECTRICAL RATING IS 450V, 30AMP, 60HZ.
 6. WIRING DIAGRAM SHALL BE ATTACHED TO THE UNDER SIDE OF THE COVER, LOCATE TO SUIT.
 7. RECEPTACLE ASSEMBLY, SYM 758.2 CONSISTS OF ITEMS 4 AND 29 THROUGH 37.
 8. APPLY LOCKTITE ADHESIVE TO THREADS BEFORE INSTALLATION.

REVISIONS				
ZONE	REV	DESCRIPTION	DATE	AUTH
1A, 4C 1B, 6A 6C 6D	A	ADDED: ITEMS 27&28. GND SCREW CALLOUT. CHANGED: ITEM 16 QTY, WAS 5, OVERALL HEIGHT WAS 6-1/4". SW TO RECEPTACLE DISTANCE WAS 2-5/8". SW TO WARNING PLATE WAS 2-3/16". DELETED: C77 LUG, WHICH WAS ITEM 17, REVISED ITEM #S. AUTH: DESIGN REQUIREMENTS.	3/15/05	AW
1A, 5A 1B	B	ADDED: ITEMS 29 THRU 37, NOTE 8. CHANGE: ITEM 4 WAS SYM 758.2. AUTH: MFR REQUIREMENTS.	3/24/05	WW
1B	C	CHANGED: ITEM 27 & 28 WERE CRES, ITEM 35 WAS EXT TOOTH. AUTH: DESIGN REQUIREMENTS.	7/1/05	WW
1A 5A	D	ADDED: NOTE 9, ITEM 38. CHANGED: ITEM 17 QTY WAS 4. ITEM 15 WAS M81044-12-12-8. DELETED: ITEM 37. ECO 1328.	6/12/06	WW
8C 1B	E	REVISED: NAMEPLATE WAS /19B. ITEM 19 WAS X-SLW-CRES-250. ITEM 35 WAS X-ILW-PHB-6. AUTH: MIL-R-2726/19C & MFR REQ.	4/23/09	AW
4C 5A	F	ADDED: CENTER OF GRAVITY (COG) REVISED: NOTE 7, WAS 7LBS(EST) AUTH: DESIGN REQ.	10/20/09	WW
5A 1B 4B	G	ADDED: WIRING DIAGRAM, ITEM 39, FOR SYM 915.1-VCS. DELETE: ITEM 28 & CHANGE ITEM 22 QTY FROM 5 TO 7. AUTH: DESIGN REQ.	7/18/14	AW

Parts List			
ITEM	QTY	PART NUMBER	DESCRIPTION
1	1	200699	BOX WELDMENT, BRASS, 4 X 7 X 3-1/2
2	1	200700	COVER WELDMENT, BRASS, 4 X 7
3	1	3SR3A4	SWITCH, ROTARY, 30A, 500V, TPST
4	1	100975	RECEPTACLE BODY, PLASTIC, MIL-R-2726/9
5	1	SYM 1142.1	CAP ASSY, MIL-R-2726/13
6	1	100974	HANDLE, NYLON, BLACK
7	1	200701	SW COUPLER WELDMENT, BRASS
8	1	74089-149	SWITCH COUPLER PLATE, CRES
9	1	100531-3	SWITCH COUPLER PLATE PIN, CRES
10	1	MS28775-362	GASKET, "O" RING, RUBBER
11	1	MS28775-010	O-RING, SYNTHETIC RUBBER, .241" ID X .070" THK
12	1	100994	WARNING PLATE, BRASS
13	1	100995	ID PLATE, BRASS
14	1	100996	INSULATOR, SW CONTACT, NOMEX 410
15	5'	M16878-16BMG8	WIRE, 10 GAGE, GRAY
16	6	MS2659-105	LUG, TERMINAL, NON-INSL, #10 STUD
17	2	X-NUTH-CRES-0420	HEXNUT, HEAVY, CRES, 1/4-20
18	2	X-FLW-CRES-250	WASHER, FLAT, CRES, 1/4"
19	2	MS35338-101	WASHER, SPLIT-LOCK, PHOS-BRZ, 1/4"
20	4	X-RHM-BRS-024-375	RHMS, BRASS, 10-24 X 3/8"
21	7	X-RHM-BRS-024-500	SCREW, RHM, BRASS, 10-24 X 1/2"
22	7	X-ELW-PHB-10	WASHER, EXT TOOTH, PHOS-BRZ, #10
23	6	X-FLW-BRS-10	WASHER, FLAT, BRASS, #10
24	4	X-RHM-BRS-632-250	SCREW, RHM, BRASS, 6-32 X 1/4"
25	1	WM-915.1	WIRE MARKER SET, 1/4" WHITE HEAT SHRINK, M23053/5
26	1	WD-SYM 915.1	WIRING DIAGRAM, PAPER, ADHESIVE (FOR SYM 915.1)
27	3	X-NUT-BRS-1024	NUT, HEX, BRASS, 10-24
28	2	X-ELW-PHB-10	WASHER, EXT TOOTH, PHOS-BRZ, #10
29	1	100977	INSULATOR CAP, CONTACT, PLASTIC
30	4	100976	CONTACT, SILVER PLATED COPPER
31	1	MS28775-229	O-RING, GASKET, RUBBER
32	1	100997	GASKET, PLUG SEALING, 1/8" RUBBER
33	2	100998	RETAINER CLIP, BRASS
34	1	X-RHM-BRS-632-875	RHMS, BRASS, 6-32 X 7/8"
35	1	X-SLW-BRS-6	WASHER, SPLIT-LOCK, BRASS, #6
36	1	X-RHM-BRS-032-500	RHMS, BRASS, 10-32 X 1/2"
37	2	X-ELW-PHB-10	WASHER, EXT TOOTH, PHOS-BRZ, #10
38	2	X-NUT-BRS-0420	NUT, HEX, BRASS, 1/4-20
39*	1	WD-915.1-VCS	WIRING DIAGRAM, PAPER, ADHESIVE

THIS DRAWING/DOCUMENT CONTAINS INFORMATION WHICH IS PROPRIETARY TO AND PROPERTY OF COMSACO, INC. IT IS DISTRIBUTED WITH THE UNDERSTANDING THAT IT WILL BE RETAINED IN CONFIDENCE AND WILL NEITHER BE DUPLICATED NOR COPIED IN WHOLE OR IN PART NOR USED FOR ANY PURPOSE OTHER THAN THAT FOR WHICH DISCLOSED WITHOUT EXPRESS WRITTEN PERMISSION FROM COMSACO, INC.

UNLESS OTHERWISE SPECIFIED DIMENSIONS ARE IN INCHES TOLERANCES ARE: FRACTIONS DECIMALS ANGLES +/- 1/64 .XX .XXX .005

DRAWN CHRIS WINDLEY	1/17/2005
CHECKED	
QA	
MFG	
APPROVED W WESTHOFF	3/8/2005

COMSACO, INC. NORFOLK, VA. 23502	
TITLE RECEPTACLE CONNECTOR W/SW, 450V, 30A, SYM 915.1	
SIZE D 57626	REV G
SCALE	SHEET 1 OF 1

NEXT ASSY	USED ON
-----------	---------