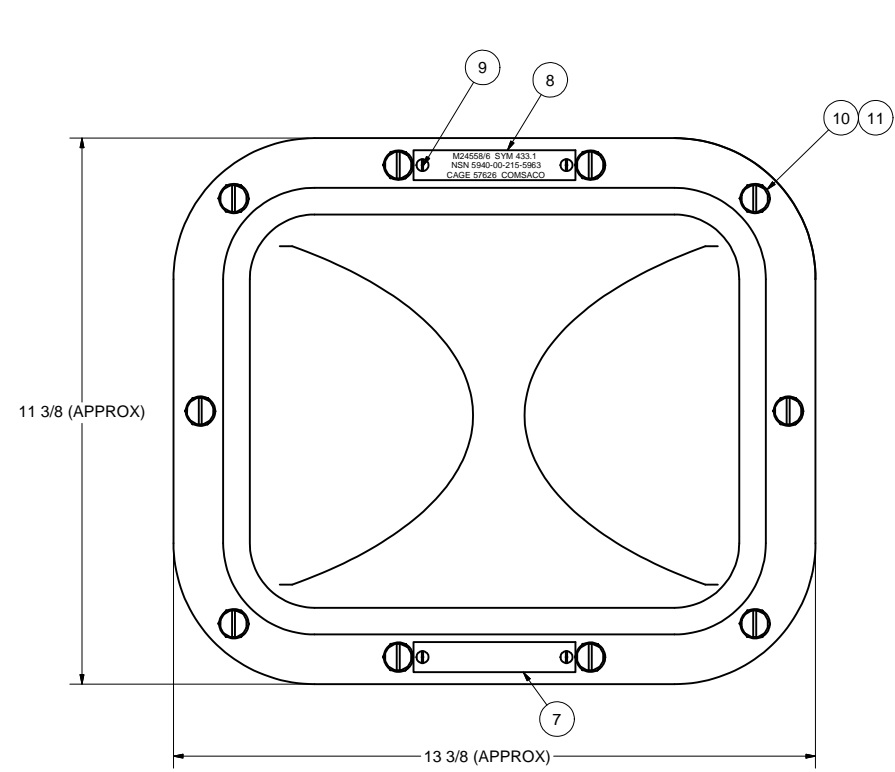


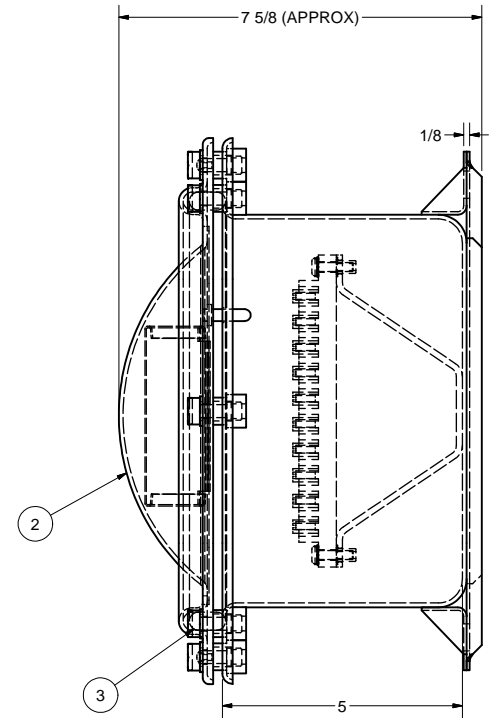
M24558/6 SYM 433.1  
NSN 5940-00-215-5963  
CAGE 57626 COMSACO

ITEM 8

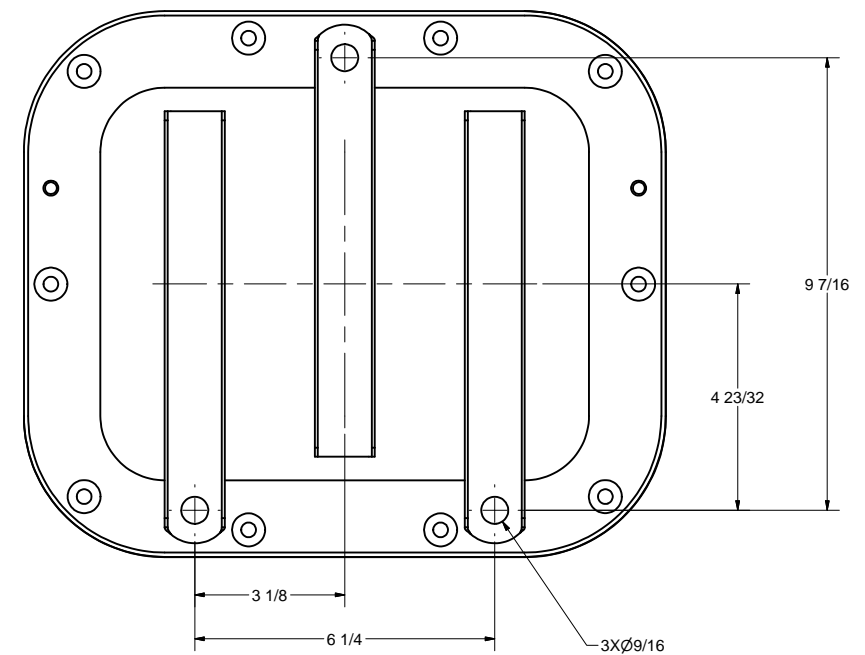
ZONE		REV	DESCRIPTION	DATE	AUTH
—		A	ADDED: NOTE 1, FINISH DATA, CAGE #.	1/20/98	WW
ALL		B	ADDED: SHOCK & VIBRATION NOTE, ITEM 12. CHANGED: ITEM 8 WAS 100305-2. REVISED: DWG INTO CAD FORMAT. AUTH: DESIGN REQUIREMENTS.	11/13/07	WW
7A		C	ADDED: NOTE 8.	7/3/08	WW



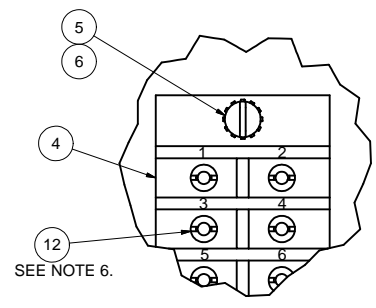
FRONT VIEW



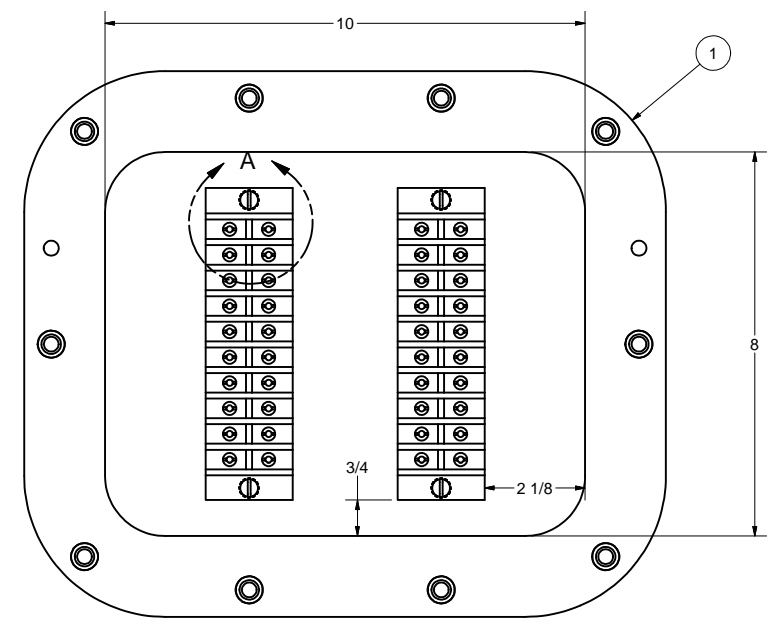
SIDE VIEW



BACK VIEW



DETAIL A



FRONT VIEW LESS COVER

- NOTES:
- THIS DRAWING DEVELOPED FROM MIL-T-24558/6A.
  - RATINGS AND SPECIFICATIONS:
    - A) 600 VOLTS, 40 AMPS MAXIMUM PER STUD OF TERMINAL BOARD.
    - B) 40 TERMINALS, 160 WIRES MAX.
    - C) DEGREE OF ENCLOSURE: SUBMERSIBLE TO 15 FEET (SBM-15) PER MIL-STD-108.
    - D) MAGNETIC PERMEABILITY: LESS THAN 2.0 FERROUS MATERIALS: NONE.
    - E) WEIGHT: 18 LBS MAX. (BRASS), 9 LBS MAX. (ALUMINUM).
  - UNLESS OTHERWISE SPECIFIED, CABLE ENTRANCE DEVICES WILL BE PROVIDED AND INSTALLED BY THE INSTALLING ACTIVITY.
  - TERMINAL BOARDS ARE MOLDED BARRIER STUD TYPE, CLASS 4TB PER A-A-59125/10, MAXIMUM LUGS PER STUD IS 4. BU-SHIPS TYPE L80. STUDS ARE 8-32.
  - SHOCK AND VIBRATION APPROVAL BY EXTENSION HAS BEEN GRANTED FOR THIS EQUIPMENT BASED ON SIMILARITY TO SYMBOL 525 TERMINAL BOX PER SUPERVISOR OF SHIPBUILDING, CONVERSION AND REPAIR, USN GROTON, LTR N00024-88-C-2000, F#E910, SER 272E/910, DATED 06 JUN 1991 AND SUPERVISOR OF SHIPBUILDING, CONVERSION AND REPAIR, USN, NEWPORT NEWS, LTR 9072, SER CVN65COH-273B/0462, DATED 10 MAR 1992. SYMBOL 525 HAS PASSED FIRST ARTICLE TESTING PER COMSACO REPORT FA-1009 AND AERO-NAV LABORATORIES TEST REPORT 7-9795-8, DATED 04 SEPT 1987. TESTS INCLUDED LIGHTWEIGHT SHOCK GRADE A, CLASS 1, TYPE A AND TYPE 1 VIBRATION.
  - BARREL NUTS FOR TERMINAL BOARDS TO BE PACKAGED SECURELY AND SHIPPED LOOSE INSIDE ENCLOSURE.
  - FINISH: INTERIOR ONLY WITH WHITE ENAMEL.
  - ALUMINUM ASSEMBLY PROVIDED PER COMSACO PART NUMBER SYM 433.1MA.

Parts List				
ITEM	QTY	PART NUMBER	DESCRIPTION	
1	1	200140	BOX WELDMENT, BRASS, 8X10X5	
2	1	200174-101	COVER WELDMENT, BRASS, DOMED, 8X10	
3	1	100146-1	GASKET, COVER, RUBBER	
4	2	4TB20	TERMINAL BOARD, 20T, 40A,600V, A-A-59125/10	
5	4	X-RHM-BRS-024-750	SCREW, RHM, BRASS, 10-24 X 3/4"	
6	4	X-ELW-PHB-10	WASHER, EXT TOOTH, PHOS-BRZ, #10	
7	1	100305-1	INFO PLATE, BRASS, BLANK	
8	1	100305-433.1	ID PLATE, BRASS, ENGRAVED	
9	5	X-RHM-BRS-632-250	SCREW, RHM, BRASS, 6-32 X 1/4"	
10	10	74031-5	BOLT, COVER, BRASS, 3/8-16 X 1-1/18	
11	10	AN960B616	WASHER, FLAT, BRASS, 3/8"	
12	40	101250-4	BARREL NUT, BRASS, 8-32	

THIS DRAWING/DOCUMENT CONTAINS INFORMATION WHICH IS PROPRIETARY TO AND PROPERTY OF COMSACO, INC. IT IS DISTRIBUTED WITH THE UNDERSTANDING THAT IT WILL BE RETAINED IN CONFIDENCE AND WILL NEITHER BE DUPLICATED NOR COPIED IN WHOLE OR IN PART NOR USED FOR ANY PURPOSE OTHER THAN THAT FOR WHICH DISCLOSED WITHOUT EXPRESS WRITTEN PERMISSION FROM COMSACO, INC.

UNLESS OTHERWISE SPECIFIED DIMENSIONS ARE IN INCHES  
TOLERANCES ARE:  
FRACTIONS DECIMALS ANGLES  
+/- 1/64 .XX .XXX .005

REDRAWN  
**CHRIS WINDLEY** 10/11/2007

ORIGINAL ISSUE  
**W WESTHOFF** 8/11/1996

QA

MFG

APPROVED  
**W WESTHOFF** 8/11/1996

**COMSACO, INC.**  
NORFOLK, VA. 23502

TITLE  
**TERMINAL BOX ASSY, BRASS, 40T, SBM-15, SYM 433.1**

SIZE CODE IDENT NO DWG NO REV  
**D 57626 404-433.1 C**

SCALE SHEET 1 OF 1

NEXT ASSY	USED ON
-----------	---------