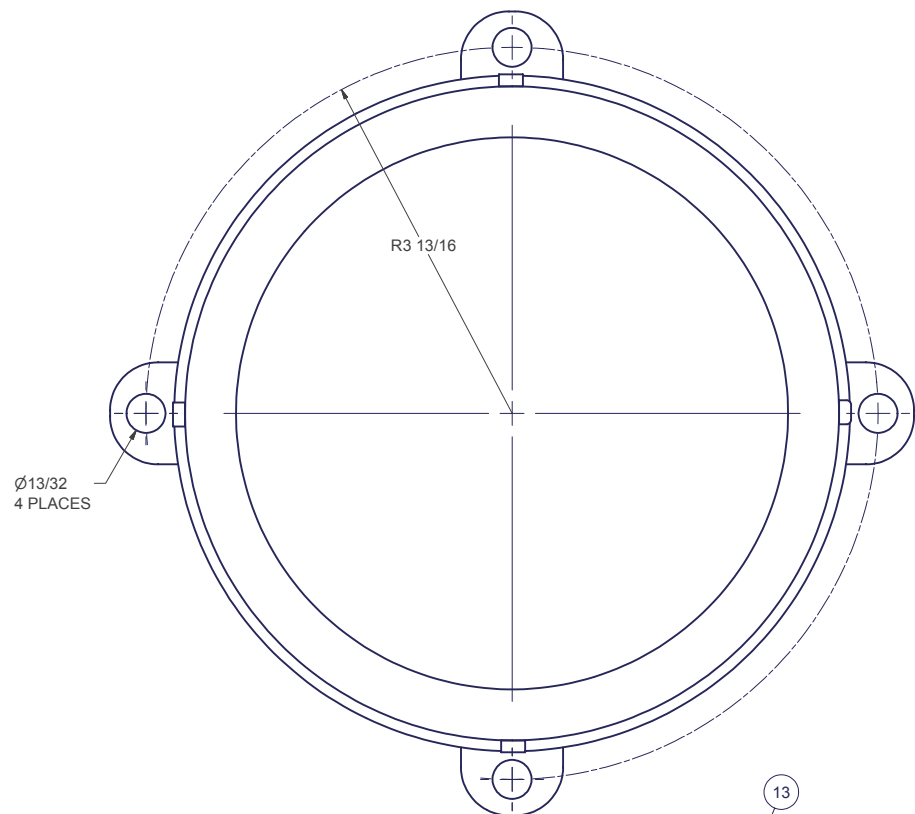
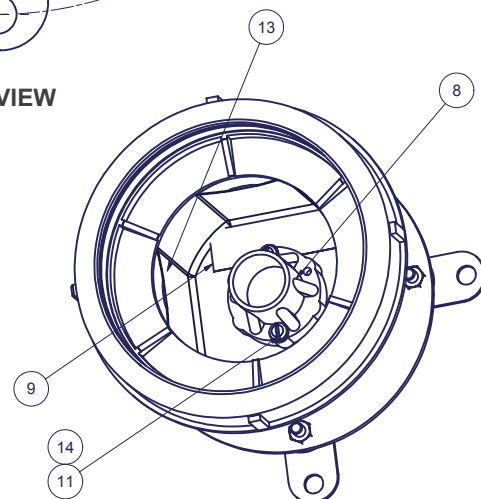


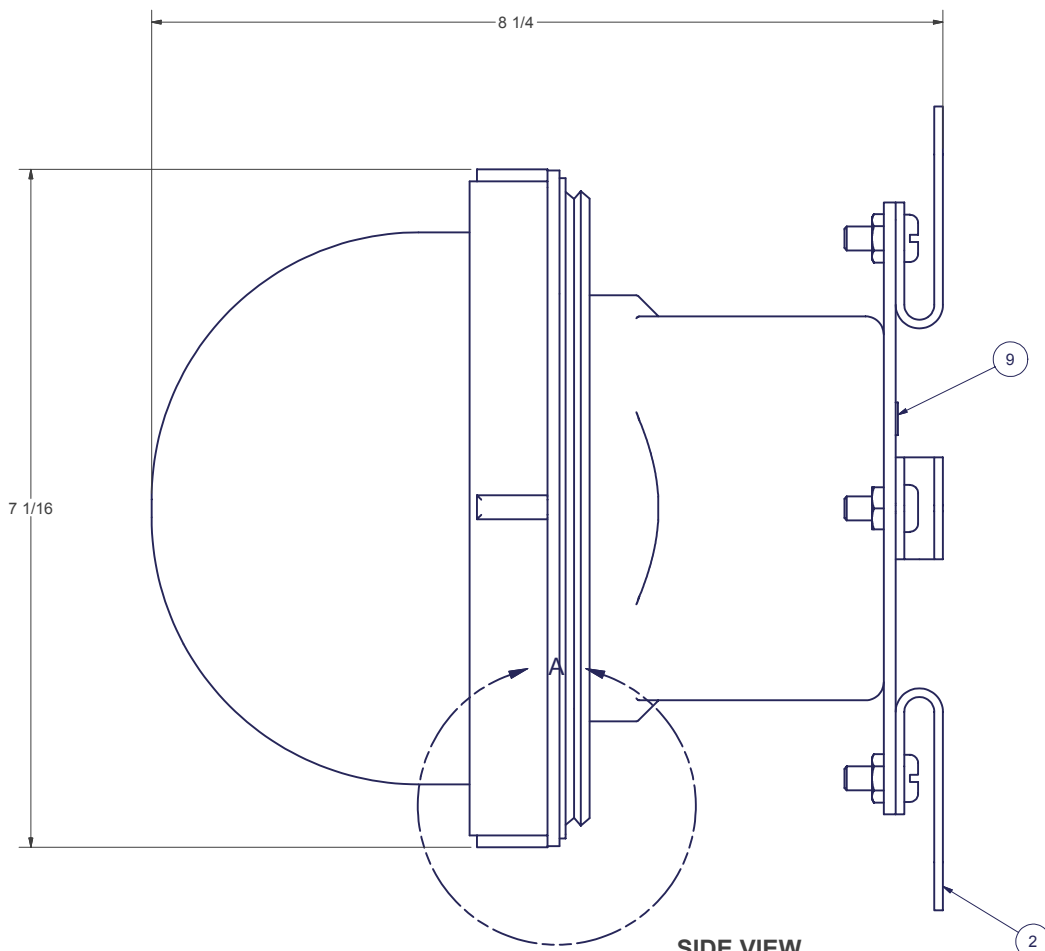
REVISIONS				
ZONE	REV	DESCRIPTION	DATE	AUTH
B3	A	CHANGE: ITEM 11 WAS FHMS 10-24 X 3/4.	9/29/88	WW
1A 4A 3A	B	ADDED: SPECIFICATIONS TO ITEMS 3 & 4, -101 TO APPLICATION BLACK. DELETED: "TT-E-489" FROM FINISH BLOCK	6/5/91	WW
2B	C	CHANGED: ITEM 11 LENGTH WAS 11/16. REVISED: ITEM 2 WAS 400112, DWG INTO CAD FORMAT. ECO: 1044	9/4/03	AW



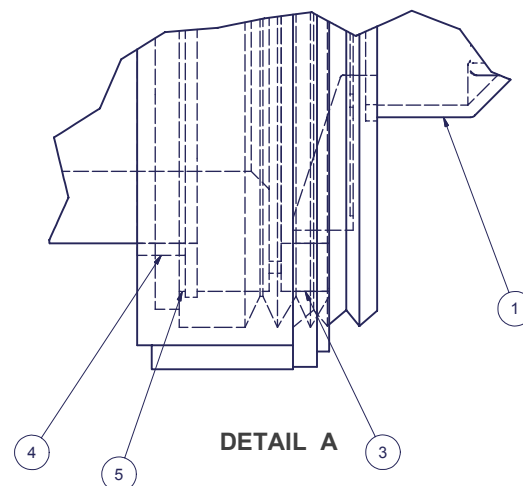
TOP VIEW



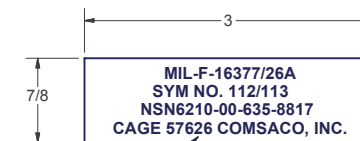
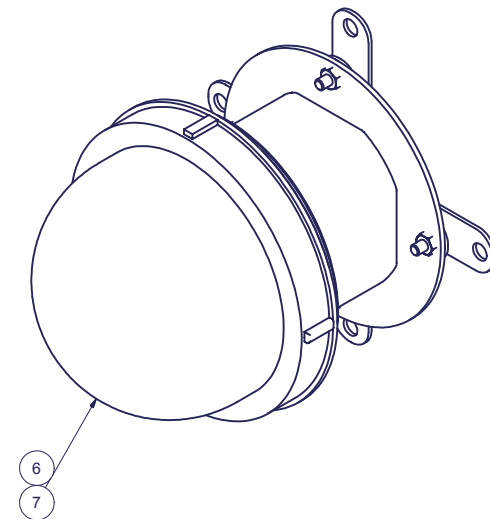
TOP VIEW W/O GLOBE



SIDE VIEW

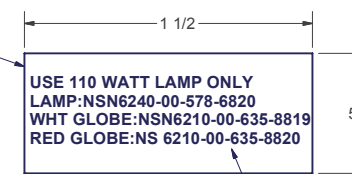


DETAIL A



100373

1/8" HIGH CHARACTERS MIN.



100372

1/16" HIGH CHARACTERS MIN.

- NOTES:
- THIS DRAWING DEVELOPED FROM MIL-F-16377/26A.
 - RATINGS AND SPECIFICATIONS:
 - 120 VOLTS, 110 WATTS
 - DEGREE OF ENCLOSURE, WATERTIGHT
 - WEIGHT: 8 LBS, 9 OZ.
 - QUALITY CONFORMANCE TESTS AND INSPECTIONS PER MIL-F-16377 AS FOLLOWS:
 - VISUAL AND DIMENSIONAL INSPECTION PER PAR. 4.5. SAMPLE PER MIL-STD-105, LEVEL I, AQL 2.5%.
 - OPERATIONAL AND DIELECTRIC TESTS PER PAR. 4.6. SAMPLE PER MIL-STD-105 LEVEL S-2, ZERO FAILURES ALLOWED.
 - MECHANICAL OPERATION.
 - DIELECTRIC @ 1240 VAC.
 - MATERIAL FOR SLIP RING MAY BE BRASS (.032" THICK) OR POLYESTER (.014" THICK).
 - FINISH: INTERIOR AND EXTERIOR ONE COAT WHITE ENAMEL COLOR 17875.
 - KIT ITEM 2 IN PLASTIC BAG AND PLACE INSIDE ENCLOSURE.

-101	SYM 112 BODY
-101	M16377/26-001
-103	SYM 113
-102	SYM 112
P/N	NEXT ASSY USED ON

UNLESS OTHERWISE SPECIFIED
DIMENSIONS ARE IN INCHES
TOLERANCES ARE:
FRACTIONS DECIMALS ANGLES
+/- 1/64 .XX .XXX .005

ASSY	ITEM	PART NUMBER	DESCRIPTION
-103	-102	-101	ITEM
1	1	1	200213 BOX WELDMENT, M16377/26, BRASS
4	4	4	2 400112-102 SHOCKMOUNT ASSY, BRASS
1	1	1	3 100371 GASKET, 1/4" SQUARE, NEOPREN
1	1	1	4 100370 GASKET, CENTERING, NEOPRENE
1	1	1	5 100369 RING, SLIP, BRASS OR POLYESTER
—	1	—	6 M16377-26-002 GLOBE, WHITE, M16377/26-002
1	—	7	M16377-26-003 GLOBE, RED, M16377/26-003
1	1	1	8 M970-6-1 LAMPHOLDER, 2 CONTACT, 250V, 600W
2	2	2	9 100373 ID LABEL, TYPE I, PAPER
2	2	2	11 COMMERCIAL RHMS, 10-24 X 3/4, BRASS
—	—	—	12 110R30/FL/RS LAMP, 110 WATT, MS16563-1
1	1	1	13 100372 LABEL, TYPE IV, PAPER
2	2	2	14 COMMERCIAL WASHER, EXTERNAL TOOTH, #10 PH-BRZ

REDRAWN	CHRIS WINDLEY	4/23/2003	COMSACO, INC. NORFOLK, VA. 23502 LIGHT FIXTURE ASSY, SYM 112/113	
ORIGINAL	WALTER WESTHOFF	4/19/1988		
QA				
MFG				
APPROVED			TITLE LIGHT FIXTURE ASSY, SYM 112/113	
	SIZE	CODE IDENT NO.	DWG NO.	REV
	D	57626	404-112-113	C
	SCALE		SHEET 1 OF 1	