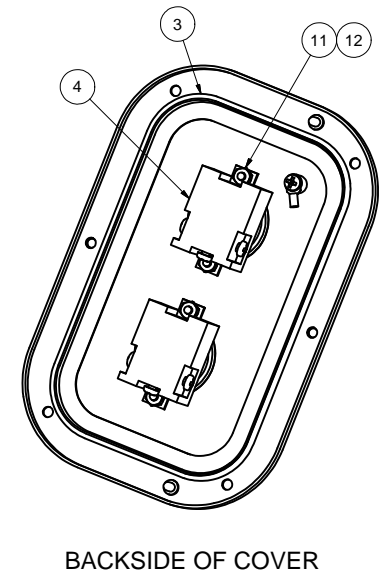
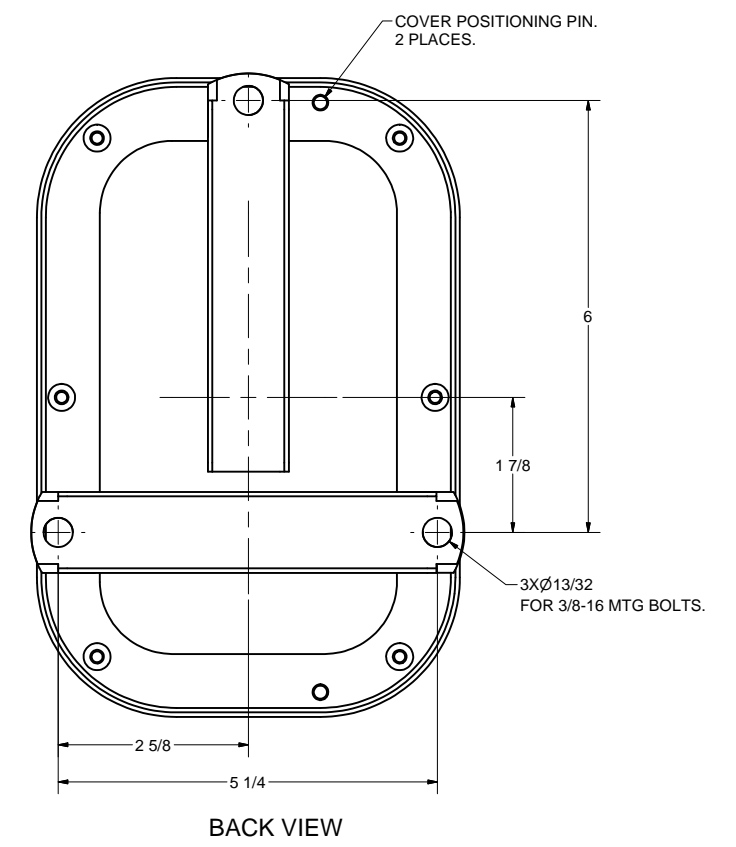
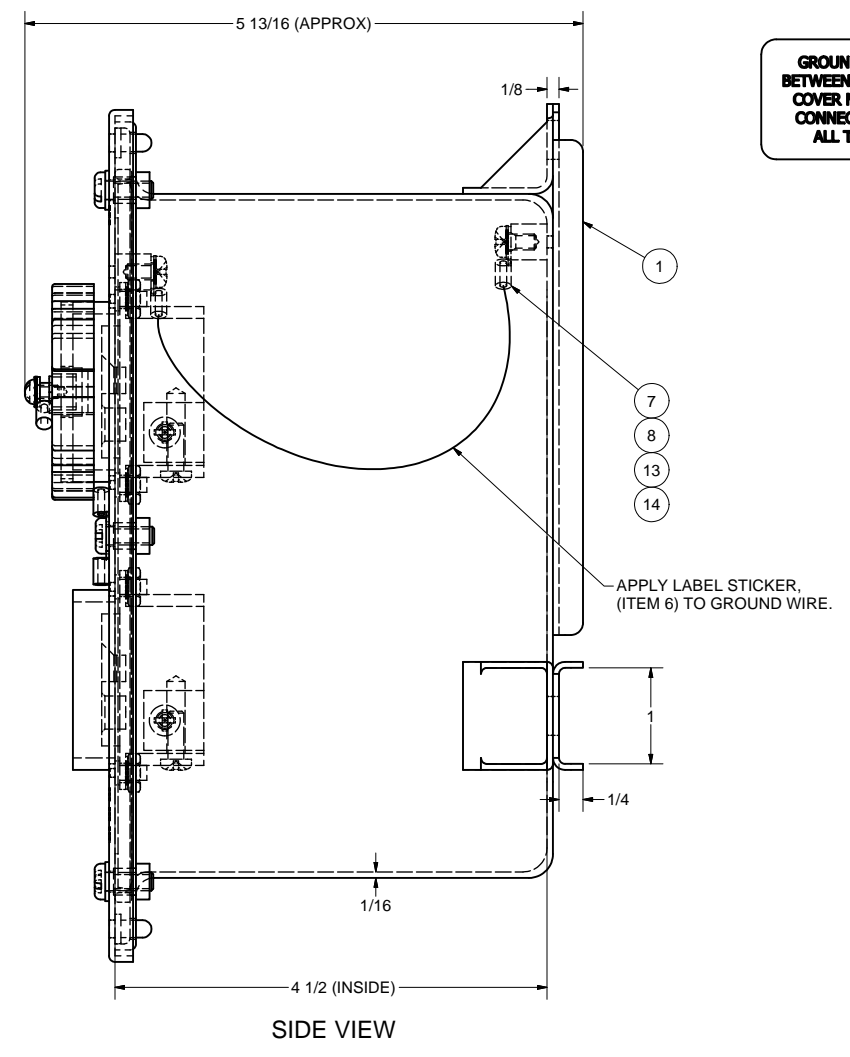
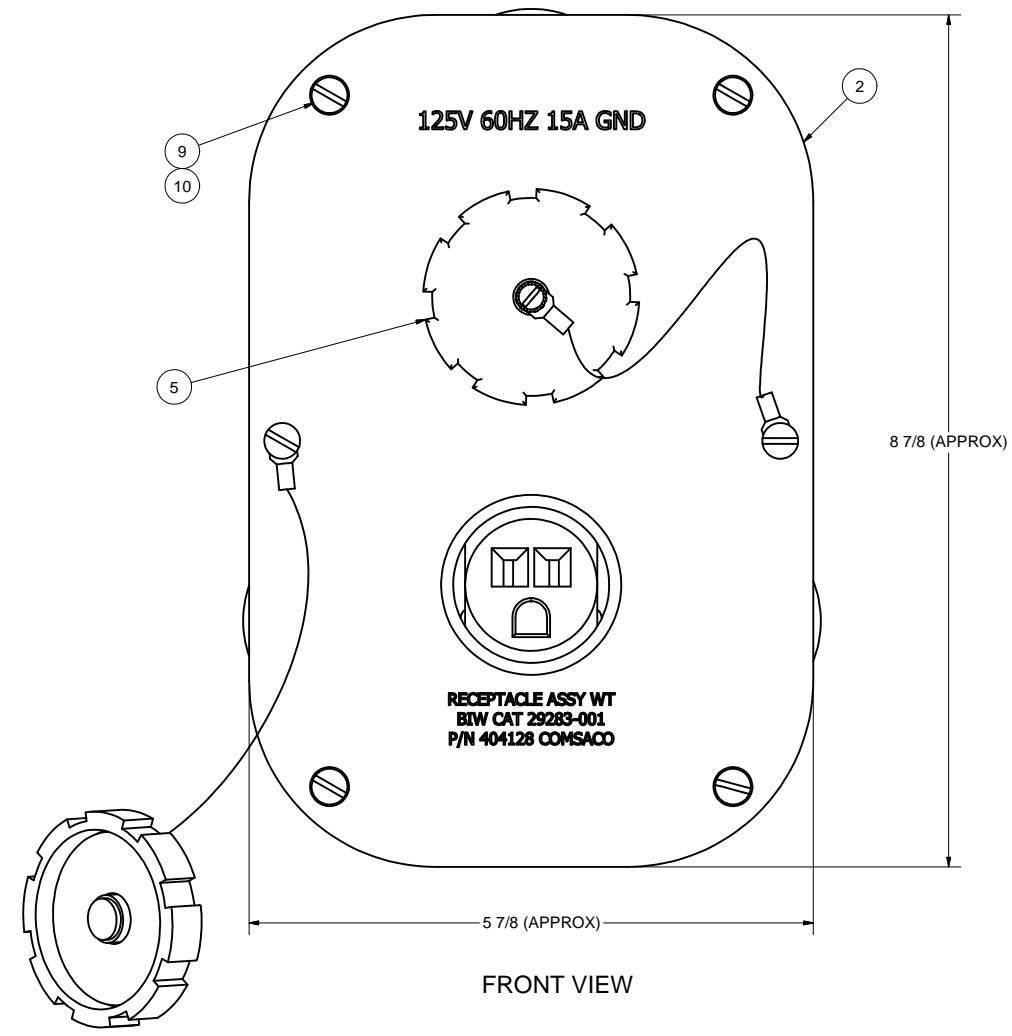


REVISIONS				
ZONE	REV	DESCRIPTION	DATE	AUTH
ALL	A	ADDED: ITEM 6, SHOCK AND VIBRATION APPROVALS. DELETED: LANYARD CUT AND INSTALL LUG CALLOUT. REVISED: DWG INTO CAD FORMAT. COVER TEXT WAS "COMSACO MARINE". AUTH: ECO 1026.	6/5/13	WW
2A	B	REVISED: ITEM 11, WAS EXT TOOTH. AUTH: DWG ERROR.	1/21/14	AW

**GROUND WIRE BETWEEN BOX AND COVER MUST BE CONNECTED AT ALL TIMES**

**GROUND WIRE BETWEEN BOX AND COVER MUST BE CONNECTED AT ALL TIMES**

100798, ITEM 6



- NOTES:**
- THIS DRAWING DEVELOPED FROM BIW CATALOG PAGE 29283-001, MIL-R-2726 AND MIL-DTL-24142/4.
  - RECEPTACLE FITTING, ITEM 4, IS INDUSTRY NUMBER 5284 MODIFIED TO HAVE NICKLE PLATED GROUND CONTACTS AND MOUNTING STRAP.
  - INTENDED USE: PROVIDES WATERTIGHT RECEPTACLES FOR USE WITH 125 VAC, 60 HZ SINGLE PHASE POWER. MATES WITH SYMBOL 1218.3 PLUG.
  - RATINGS:
    - 125VAC, 15AMPS, 60HZ, SINGLE PHASE, GROUNDED.
    - DEGREE OF ENCLOSURE: WATERTIGHT PER MIL-STD-108E.
    - WEIGHT: 5 LBS.
  - INSPECTIONS AND TESTS:
    - P/N 404128, BIW CAT# 29283-001, DEPICTED ON THIS DRAWING HAS MET SHOCK QUALIFICATION REQUIREMENTS IN ACCORDANCE WITH MIL-S-901C. SHOCK QUALIFICATION METHOD: HIGH IMPACT SHOCK TEST SHOCK TEST CATEGORY: LIGHTWEIGHT SHOCK GRADE: A EQUIPMENT TEST/ANALYSIS CLASS: I SHOCK TEST TYPE: A MOUNTING LOCATION(SHIP): HULL MOUNTING PLANE(SHIP): BACK MOUNTING ORIENTATION(SHIP): UNRESTRICTED APPLICABLE SHOCK TEST REPORT: AERONAV LABORATORIES 1-1482-1 REV -, 19JUL1991. APPROVAL LETTER REFERENCE: SUPERVISOR OF SHIPBUILDING, CONVERSION AND REPAIR, USN BATH, 9072 SER 254/2842, 24SEP1991. TEST MOUNTING HARDWARE: (3)3/8-16 GRADE 2 STEEL BOLTS, FLAT WASHERS, SPACERS AND LOCKNUTS PER MIL-DTL-1222J.
    - P/N 404128, BIW CAT# 29283-001, DEPICTED ON THIS DRAWING HAS MET THE VIBRATION TYPE I QUALIFICATION REQUIREMENTS OF MIL-STD-167-1 (4-50Hz) BY TEST PER RETLIF TESTING LABORATORIES REPORT 1-1482-1 REV -, DATED 19JUL1991 AND APPROVED PER BATH IRON WORKS SER. NO. CVP-1342 DATED 04OCT1991.

Parts List			
ITEM	QTY	PART NUMBER	DESCRIPTION
1	1	200316	BOX WELDMENT, BRASS, 4X7, M24142/4
2	1	200317	COVER WELDMENT, BRASS, 4X7, M24142/4
3	1	MS28775-362	GASKET, "O" RING, RUBBER
4	2	M2726-37-001-1	RECEPTACLE, SINGLE, 125V, 15A
5	2	400179-101	CAP ASSEMBLY, RECEPTACLE, PLASTIC, W/LANYARD
6	1	100798	LABEL, GROUND, ADHESIVE BACKED COATED PAPER
7	12"	M81044-12-14-8	WIRE, 14AWG, GRAY, 600V
8	2	MS25036-153	LUG, INSL, 16-14AWG, #8 STUD
9	6	X-RHM-BRS-024-0500	SCREW, RHM, BRASS, 10-24 X 1/2"
10	4	X-FLW-BRS-10	WASHER, FLAT, BRASS, #10
11	4	X-ILW-CRES-8	WASHER, INT TOOTH, CRES, #8
12	4	X-NUT-CRES-832-U	NUT, HEX, CRES, 8-32, SMALL BODY
13	2	X-RHM-BRS-832-313	SCREW, RHM, BRASS, 8-32 X 5/16"
14	2	X-ILW-PHB-8	WASHER, EXT TOOTH, PHOS-BRZ, #8

REDRAWN  
CHRIS WINDLEY 6/4/2013

ORIGINAL  
W WESTHOFF 5/17/1991

QA

MFG

APPROVED

UNLESS OTHERWISE SPECIFIED DIMENSIONS ARE IN INCHES TOLERANCES ARE: FRACTIONS DECIMALS ANGLES +/- 1/64 .XX .XXX .005

**COMSACO, INC.**  
NORFOLK, VA. 23502

TITLE  
**RECEPTACLE ASSY, DUPLEX, 125VAC, 15A, WT**

SIZE CODE IDENT NO DWG NO REV  
D 57626 404128 B

SCALE SHEET 1 OF 1

NEXT ASSY	USED ON
-----------	---------