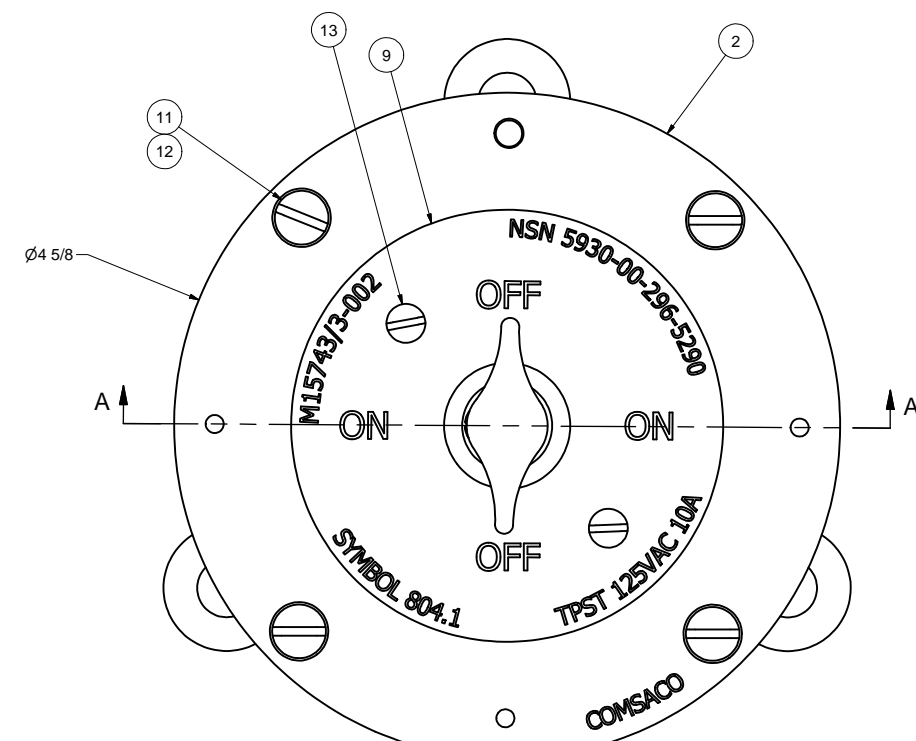
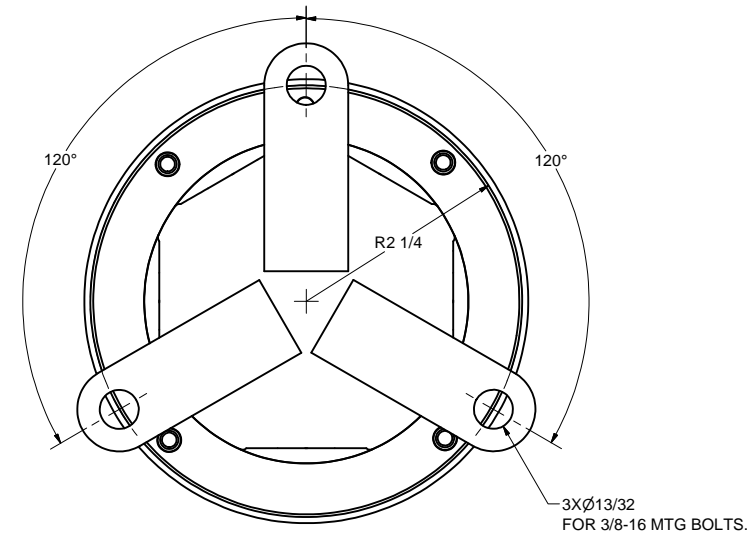
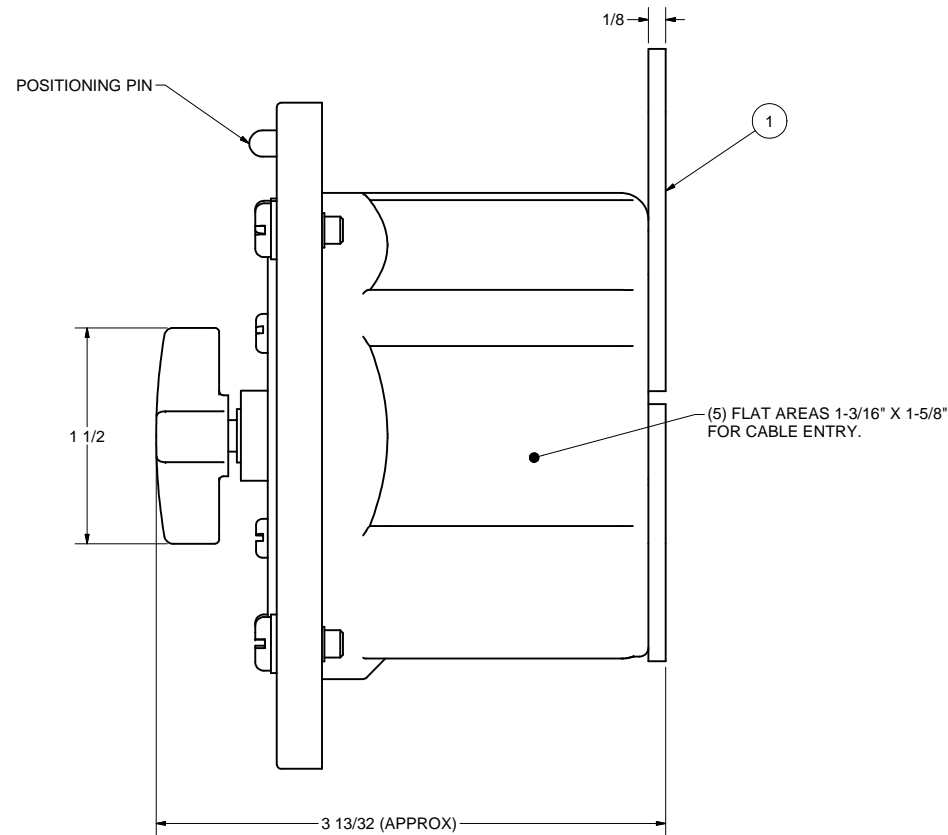


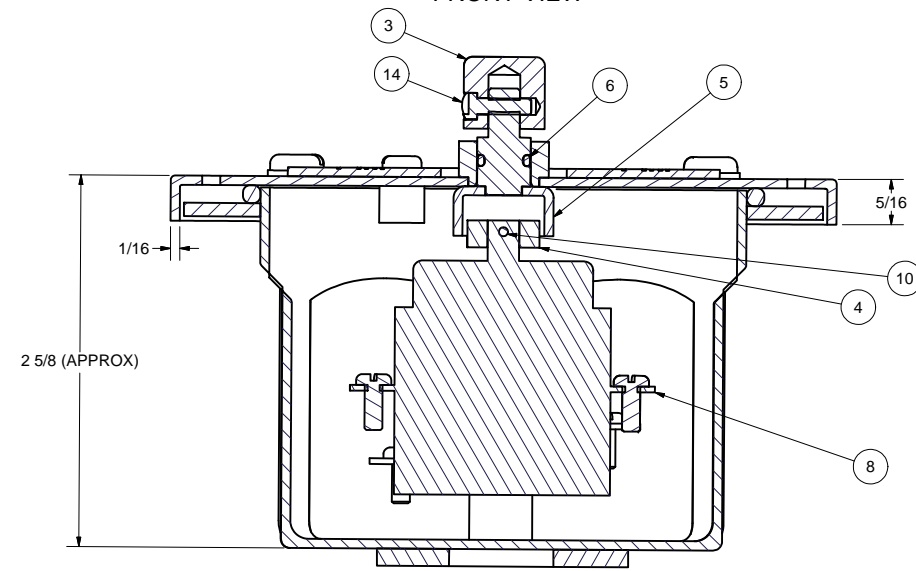
REVISIONS				
ZONE	REV	DESCRIPTION	DATE	AUTH
—	A	ADDED: MATERIAL TO PARTS LIST.	5/24/99	WW
—	B	REVISED: ID PLATE (REMOVED "COMSACO") AND DWG VIEWS.	8/2/00	AW
ALL	C	DELETED: PLASTIC WASHER 74207-16 UNDER SW HANDLE. REVISED: DWG INTO CAD FORMAT, TITLE BLOCK WAS "WT", WIRING DIAGRAM, ITEM 15 WAS CRES FH SCREW. AUTH: ADMIN. REQ.	1/28/14	AW



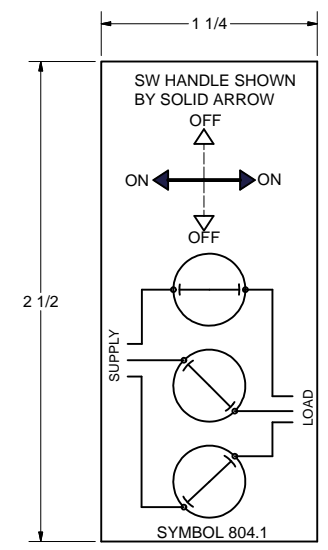
FRONT VIEW



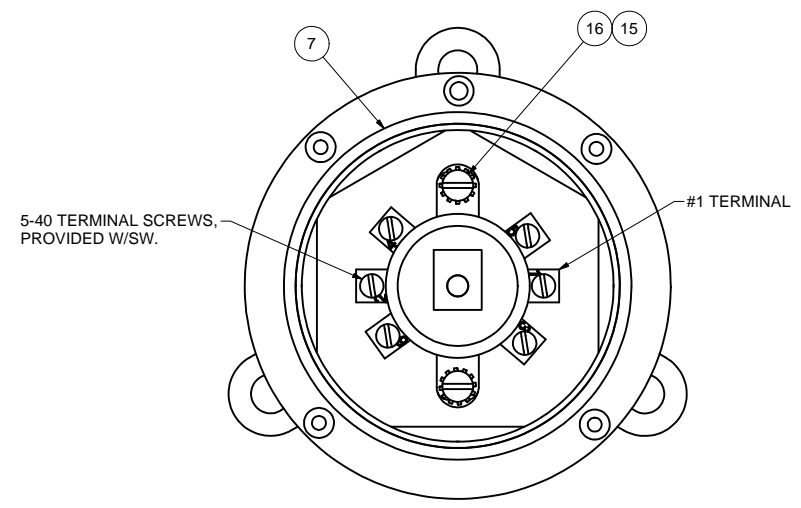
BACK VIEW



SECTION A-A



WIRING DIAGRAM  
ITEM 17



FRONT VIEW LESS COVER

Parts List			
ITEM	QTY	PART NUMBER	DESCRIPTION
1	1	200314	BOX WELDMENT, BRASS 3" RND, M24142/5
2	1	200345	COVER WELDMENT, BRASS, 3" ROUND
3	1	74000-1	HANDLE, SW, BRASS
4	1	74000-198	PLATE, SWITCH COUPLER, BRASS
5	1	74000-199	COUPLER, SWITCH, BRASS
6	1	MS28775-010	O-RING, SYNTHETIC RUBBER, .241" ID X .070" THK
7	1	MS28775-237	O-RING, SYNTHETIC RUBBER, 3.359" ID X .139" THK
8	1	1SR3A4	SWITCH, ROTARY, TPST, 125V, 10A, M15291/3-004
9	1	100441-3	PLATE, ID, BRASS, ENGRAVED
10	1	100531-2	ROLL PIN, CRES, 1/16" OD X 5/8" LG
11	4	X-RHM-BRS-024-500	SCREW, RHM, BRASS, 10-24 X 1/2"
12	4	X-FLW-BRS-10	WASHER, FLAT, BRASS, #10
13	2	X-RHM-BRS-632-250	SCREW, RHM, BRASS, 6-32 X 1/4"
14	1	X-FH-SS-440-375	SCREW, FHM, CRES, 4-40 X 3/8"
15	2	X-RHM-BRS-832-375	SCREW, RHM, BRASS, 8-32 X 3/8"
16	2	X-ILW-PHB-8	WASHER, INT TOOTH, PHOS-BRZ, #8
17	1	WD-804.1	WIRING DIAGRAM, LAMINATED PAPER

NOTES:  
1. THIS DRAWING DEVELOPED FROM 9-S-74207, AND MIL-DTL-15743/3C.  
2. EFFECTIVENESS OF ENCLOSURE: SUBMERSIBLE 15 FEET PER MIL-STD-108E(1).  
3. ELECTRICAL RATING IS 125VAC, 10AMP, 60 HZ, SWITCH ACTION IS "ON-OFF-ON-OFF".  
4. TOTAL WEIGHT IS 2 LBS.  
5. THIS EQUIPMENT HAS BEEN QUALIFIED UNDER MIL-S-901C LIGHT WEIGHT HIGH IMPACT SHOCK, GRADE A, CLASS 1, TYPE A, BULKHEAD MOUNTED, BACK MTG. PLANE, UNRESTRICTED ORIENTATION THROUGH SUPSHIP PASCAGOULA APPROVAL LETTER LHD-1/9072 SER 272B/132 DATED 18NOV1987. APPROVAL GRANTED THROUGH TESTING OF SYMBOL 804.1 BY AERO NAV TEST REPORT 7-9795-3 DATED 07APR1987.  
6. THIS EQUIPMENT HAS BEEN QUALIFIED UNDER MIL-STD-167-1(SHIPS) TYPE I VIBRATION THROUGH TESTING SYM 804.1 PER AERO NAV LAB REPORT 7-9795-3 DATED 07APR1987. SHOCK AND VIBRATION APPROVAL PER SUPSHIP, CONVERSION AND REPAIR, USN, GROTON LETTER N00024-89-C-2000 F#E308 SER 272A/308 DATED 09MAR1993.

THIS DRAWING/DOCUMENT CONTAINS INFORMATION WHICH IS PROPRIETARY TO AND PROPERTY OF COMSACO, INC. IT IS DISTRIBUTED WITH THE UNDERSTANDING THAT IT WILL BE RETAINED IN CONFIDENCE AND WILL NEITHER BE DUPLICATED NOR COPIED IN WHOLE OR IN PART NOR USED FOR ANY PURPOSE OTHER THAN THAT FOR WHICH DISCLOSED WITHOUT EXPRESS WRITTEN PERMISSION FROM COMSACO, INC.

UNLESS OTHERWISE SPECIFIED DIMENSIONS ARE IN INCHES TOLERANCES ARE:  
FRACTIONS DECIMALS ANGLES  
+/- 1/64 .XX 1/2'  
.XXX .005

REDAWN  
CHRIS WINDLEY 12/19/2013  
ORIGINAL ISSUE APPROVED  
W WESTHOFF 11/12/1998  
QA  
MFG  
APPROVED

**COMSACO, INC.**  
NORFOLK, VA. 23502

TITLE  
**ROTARY SW ASSY, BRASS,  
SBM-15, SYMBOL 804.1**

SIZE CODE IDENT NO DWG NO REV  
D 57626 404-804.1 C

SCALE SHEET 1 OF 1

NEXT ASSY	USED ON
-----------	---------