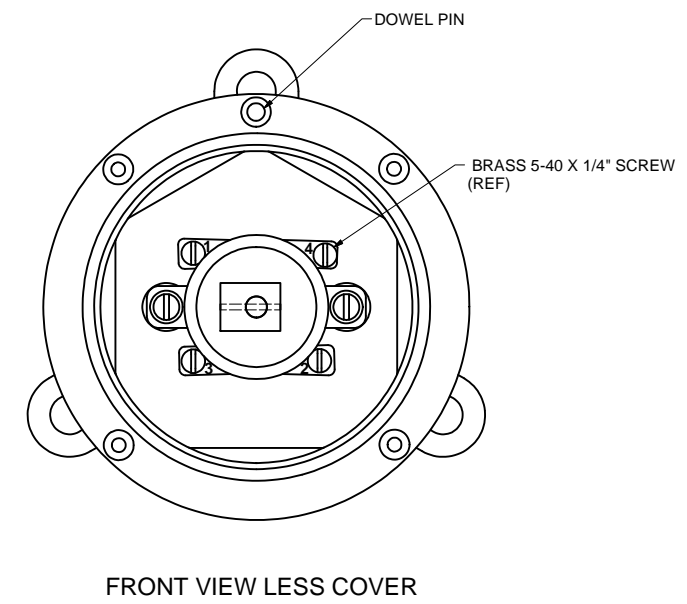
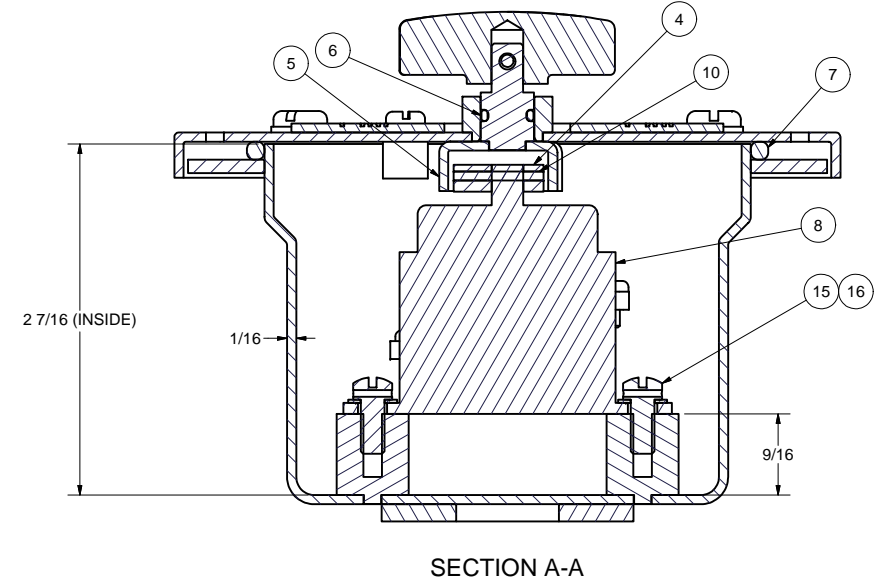
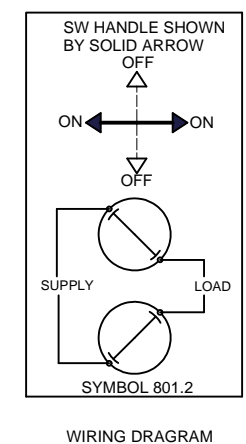
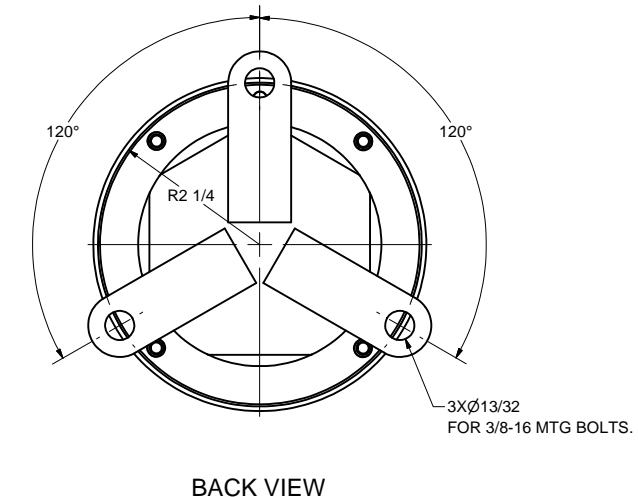
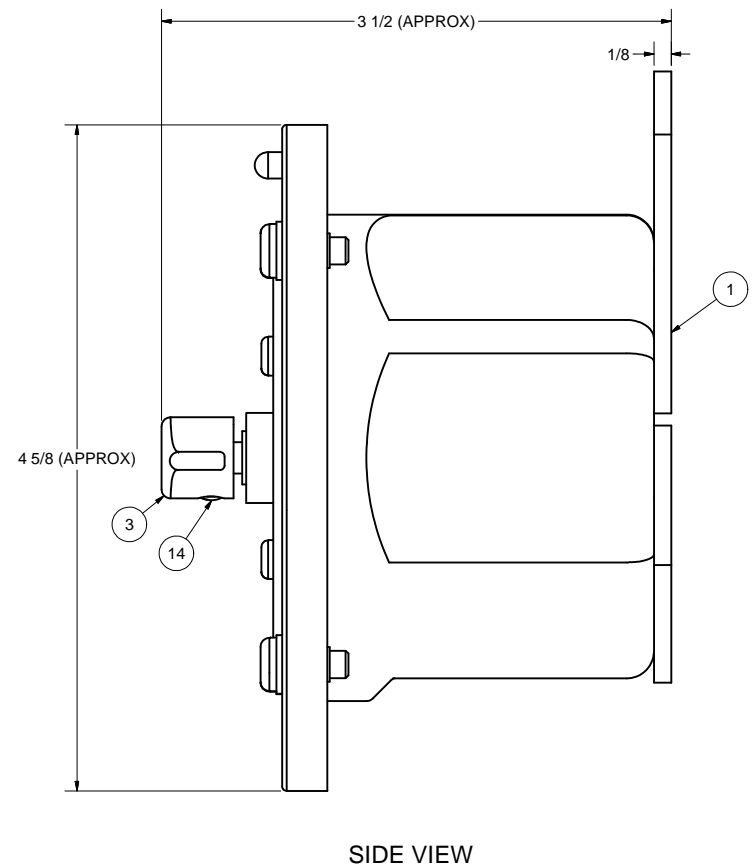
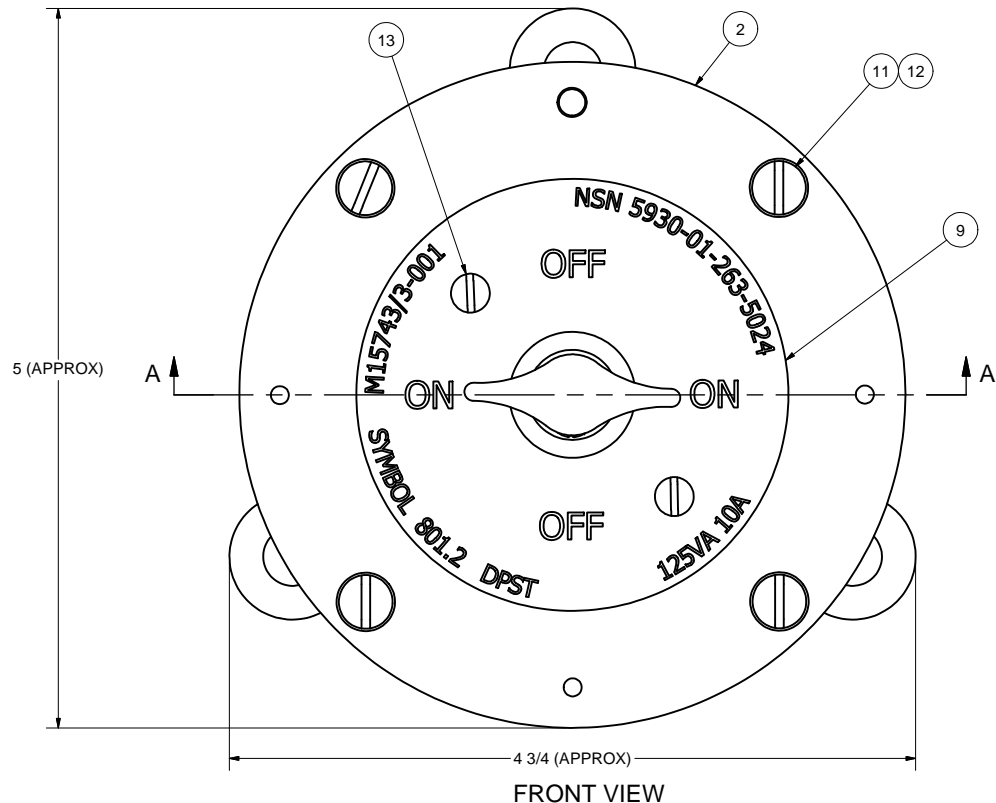


ZONE		REV	REVISIONS	DATE	AUTH
---		A	ADDED: NOTES 1-4.	6/28/99	WW
---		B	REVISED: ID PLATE (REMOVED "COMSACO") AND DWG VIEWS.	8/19/01	AW
ALL		C	REVISED: DWG INTO CAD FORMAT.	1/3/12	WW



ITEM	QTY	PART NUMBER	DESCRIPTION	SPEC	CAGE
1	1	200335	BOX WELDMENT, BRASS, 3" ROUND	MIL-E-24142/5	57626
2	1	200345	COVER WELDMENT, BRASS, 3" ROUND	MIL-E-24142/5	57626
3	1	74000-1	HANDLE, SW, BRASS	MIL-DTL-15743/3	57626
4	1	74000-198	PLATE, SWITCH COUPLER, BRASS	MIL-DTL-15743/3	57626
5	1	74000-199	COUPLER, SWITCH, BRASS	MIL-DTL-15743/3	57626
6	1	MS28775-010	O-RING, SYNETHIC RUBBER, .241" ID X .070" THK	MIL-P-24732	02697
7	1	MS28775-237	O-RING, SYNETHIC RUBBER, 3.359" ID X .139" THK	MIL-P-24732	02697
8	1	1SR2A4	SWITCH, ROTARY, 125VAC, 10A, DPST	MIL-DTL-15291/3	82121/28057
9	1	100441-2	PLATE, ID, BRASS	MIL-DTL-15743/3	57626
10	1	100531-2	ROLL PIN, CRES, 1/16" OD X 5/8" LG	MIL-DTL-15743/3	57626
11	4	X-RHM-BRS-024-500	SCREW, RHM, BRASS, 10-24 X 1/2"	ASME B18.6.3	VARIOUS
12	4	X-FLW-BRS-10	WASHER, FLAT, BRASS, #10	ASME B18.21.1	VARIOUS
13	2	X-RHM-BRS-632-250	SCREW, RHM, BRASS, 6-32 X 1/4"	ASME B18.6.3	VARIOUS
14	1	X-FH-SS-440-375	SCREW, FILLISTER HD, CRES, 4-40 X 3/8"	ASME B18.6.3	VARIOUS
15	2	X-FH-BRS-832-375	SCREW, FILLISTER HD, BRASS, 8-32 X 3/8"	ASME B18.6.3	VARIOUS
16	2	X-ILW-PHBZ-8	WASHER, INT TOOTH, PHOS-BRZ, #8	ASME B18.21.1	VARIOUS
17	1	WD-SYM 801.2	WIRING DIAGRAM, LAMINATED PAPER	MIL-DTL-15743/3	57626

NOTES:  
1. THIS DRAWING DEVELOPED FROM 9-S-74207, AND MIL-DTL-15743/3C.  
2. EFFECTIVENESS OF ENCLOSURE: SUBMERSIBLE 15 FEET PER MIL-STD-108E(1).  
3. ELECTRICAL RATING IS 125VAC, 10AMP, 60 HZ, ACTION IS ON-OFF-ON-OFF.  
4. TOTAL WEIGHT IS 2 LBS.  
5. THIS EQUIPMENT HAS BEEN QUALIFIED UNDER MIL-S-901C LIGHT WEIGHT HIGH IMPACT SHOCK, GRADE A, CLASS 1, TYPE A, BULKHEAD MOUNTED, BACK MTG. PLANE, UNRESTRICTED ORIENTATION THROUGH GOVERNMENT APPROVAL LETTER 9072/9073 SER: CVN 68RCOH-272C/1002 DATED 07OCT1998. APPROVAL GRANTED THROUGH EXTENSION FROM TESTED EQUIPMENT SYMBOL 804.1 WHICH WAS QUALIFIED PER AERO NAV LABS REPORT 7-9795-3.  
6. THIS EQUIPMENT HAS BEEN QUALIFIED UNDER MIL-STD-167-1(SHIPS) TYPE I VIBRATION THROUGH GOVERNMENT APPROVAL LETTER 9073 SER: CVN 77-272S/100549 DATED 02 APR 2009. APPROVAL GRANTED THROUGH EXTENSION FROM TESTED EQUIPMENT SYMBOL 804.1 WHICH WAS QUALIFIED PER AERO NAV LABS REPORT 7-9795-3.

<small>THIS DRAWING/DOCUMENT CONTAINS INFORMATION WHICH IS PROPRIETARY TO AND PROPERTY OF COMSACO, INC. IT IS DISTRIBUTED WITH THE UNDERSTANDING THAT IT WILL BE RETAINED IN CONFIDENCE AND WILL NEITHER BE DUPLICATED NOR COPIED IN WHOLE OR IN PART NOR USED FOR ANY PURPOSE OTHER THAN THAT FOR WHICH DISCLOSED WITHOUT EXPRESS WRITTEN PERMISSION FROM COMSACO, INC.</small>	REDRAWN <b>CHRIS WINDLEY</b> <small>ORIGINAL ISSUE APPROVED</small>	12/21/2011	<b>COMSACO, INC.</b> NORFOLK, VA. 23502
	W. WESTHOFF <small>QA</small>	5/24/1999	
UNLESS OTHERWISE SPECIFIED DIMENSIONS ARE IN INCHES TOLERANCES ARE: FRACTIONS DECIMALS ANGLES +/- 1/64 .XX 1/2° .XXX .005	APPROVED	TITLE <b>ROTARY SW ASSY, BRASS,          SBM-15, SYMBOL 801.2</b>	SIZE CODE IDENT NO DWG NO REV <b>D 57626 404-801.2 C</b>
NEXT ASSY USED ON	SCALE	SHEET 1 OF 1	