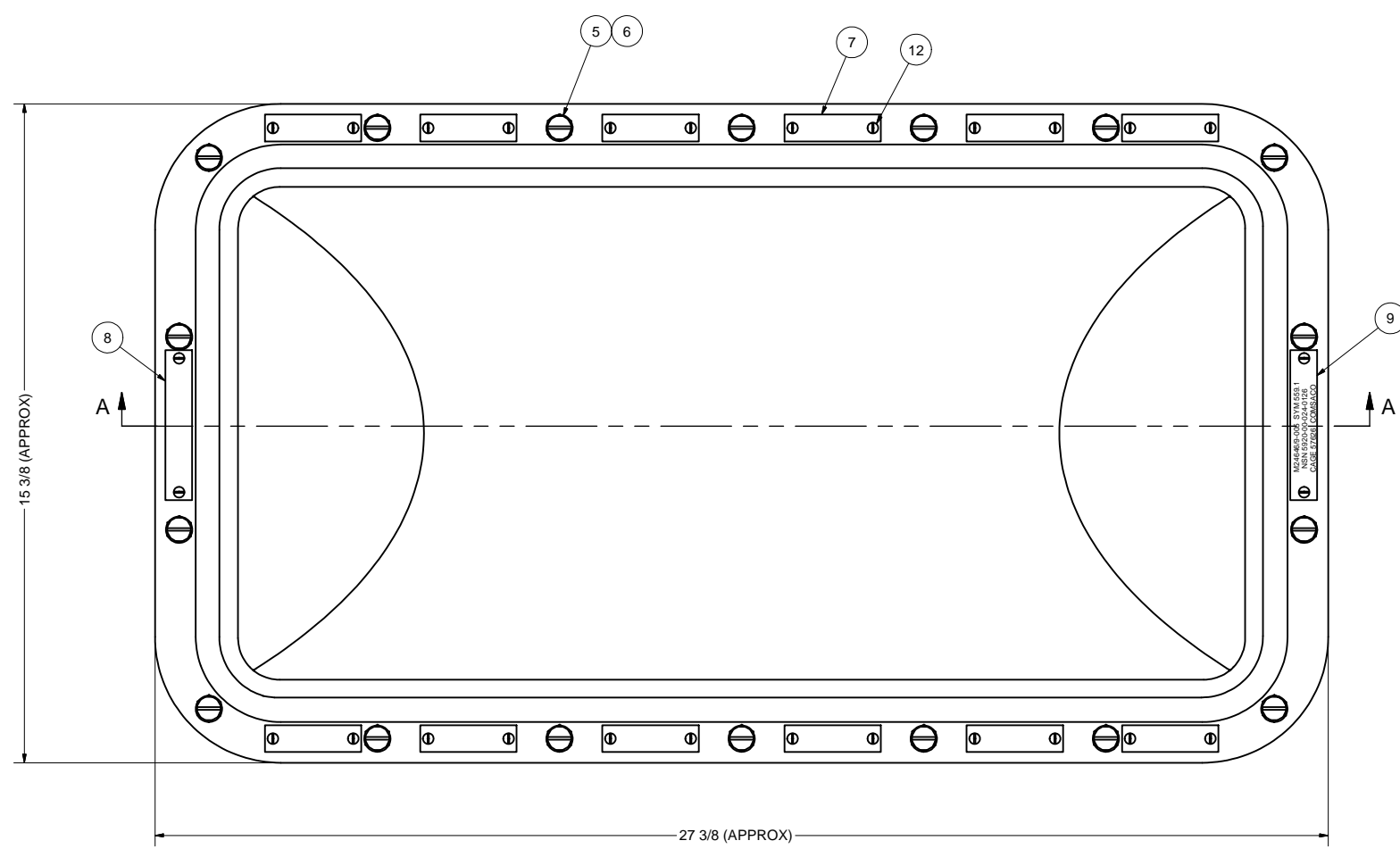
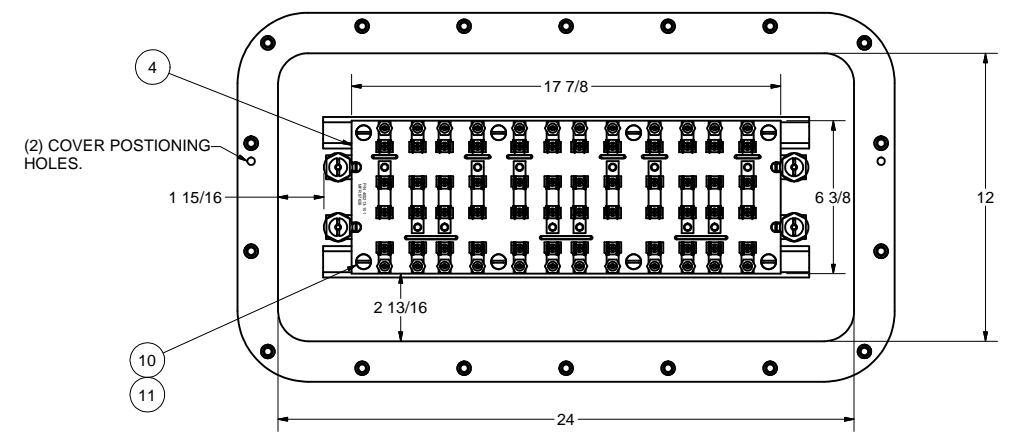


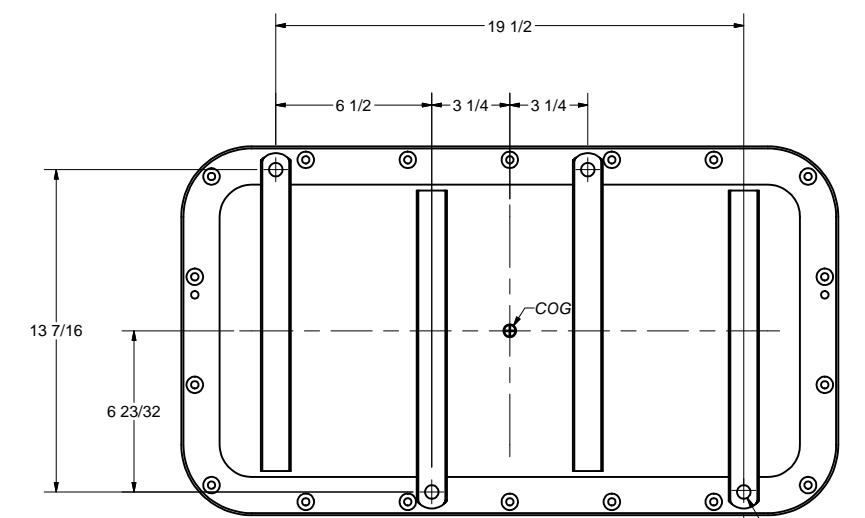
REVISIONS			
ZONE	REV	DESCRIPTION	AUTH



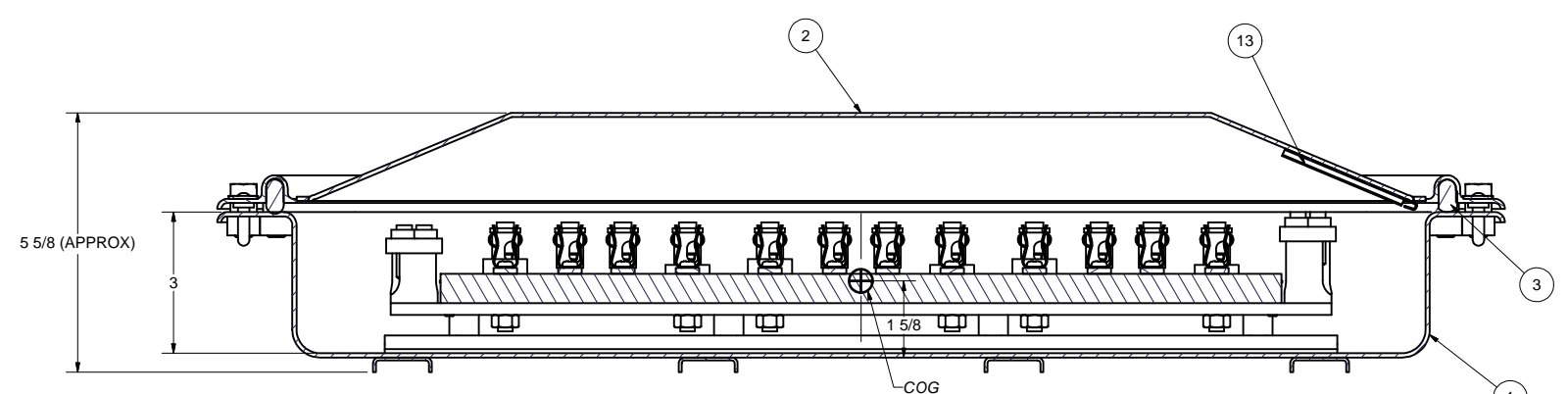
**FRONT VIEW**



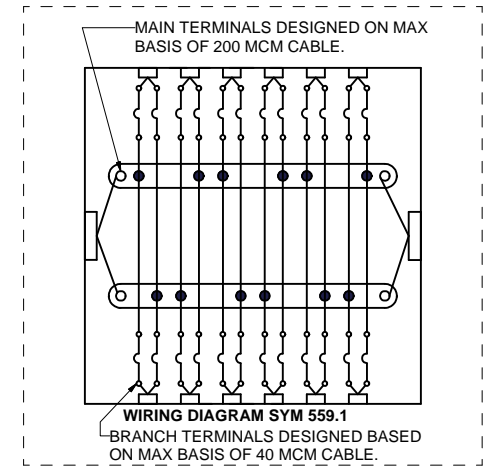
**FRONT VIEW LESS COVER**



**BACK VIEW**



**SECTION A-A**



**WIRING DIAGRAM SYM 559.1**

ITEM	QTY	PART NUMBER	DESCRIPTION
1	1	200443	BOX WELDMENT, BRASS, 12 X 24 X 3
2	1	200444	COVER WELDMENT, BRASS, 12 X 24, DOMED
3	1	100146-10	GASKET, COVER, RUBBER
4	1	400213-101	FUSE PANEL SUB-ASSY, 5/8" GPO3
5	18	74031-5	SCREW, COVER, BRASS, 3/8-16 X 1-1/8"
6	18	AN960B616	WASHER, FLAT, BRASS, 3/8"
7	12	74031-25	INFO PLATE, BRASS, BLANK
8	1	100260-1	INFO PLATE, BRASS, BLANK
9	1	100260-559.1	ID PLATE, BRASS, ENGRAVED
10	8	X-ILW-CRES-618	WASHER, INT TOOTH, CRES, 5/16"
11	8	X-RHM-SS-618-750	SCREW, RHM, CRES, SLOTTED, 5/16-18 X 3/4"
12	28	X-RHM-BRS-632-250	SCREW, RHM, BRASS, 6-32 X 1/4"
13	1	SYM 559.1-WD	WIRING DIAGRAM, LAMINATED PAPER

- NOTES:**
- THIS DRAWING DEVELOPED FROM BUSHIPS DWG 9-S-74169 AND MIL-DTL-24646/9B.
  - SPECIFICATIONS AND RATINGS:  
12 CIRCUIT, 250VAC, 1 PHASE LINE, 30 AMPS MAX, FEEDER SIZE 200 MCM, BRANCH CABLE SIZE 40 MCM. USES FUSES TYPES F15 OR F61 PER MIL-PRF-15160.  
DEGREE OF ENCLOSURE IS 15 FT. SUBMERSIBLE.
  - QUALITY CONFORMANCE INSPECTIONS REFERENCE MIL-F-24646A PARA. 4.4.
  - TOTAL WEIGHT IS 55 LBS(EST).

M24646/9-005 SYM 559.1  
NSN 5920-00-024-0126  
CAGE 57626 COMSACO

**ITEM 9**

UNLESS OTHERWISE SPECIFIED  
DIMENSIONS ARE IN INCHES  
TOLERANCES ARE:  
FRACTIONS DECIMALS ANGLES  
+/- 1/64 .XX .XXX .005

DRAWN CHRIS WINDLEY CHECKED W WESTHOFF QA MFG APPROVED	10/19/2009 10/22/2009	<b>COMSACO, INC.</b> NORFOLK, VA. 23502  <b>FUSE PANEL, BRASS, 12 CKT, 1 PHASE, SBM, SYM 559.1</b>
NEXT ASSY USED ON	SCALE	SIZE CODE IDENT NO DWG NO <b>D 57626 404-559.1</b> SHEET 1 OF 1