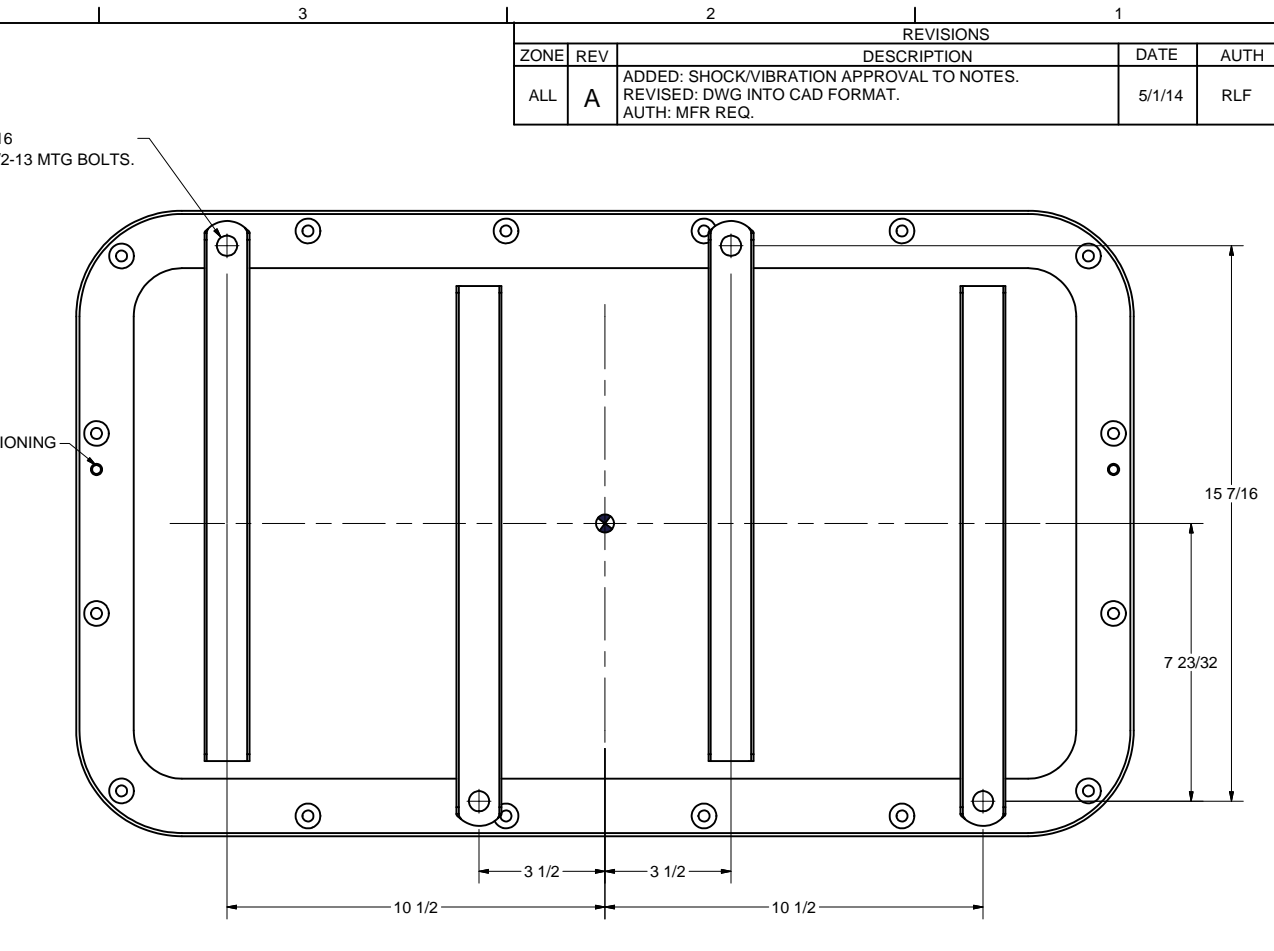
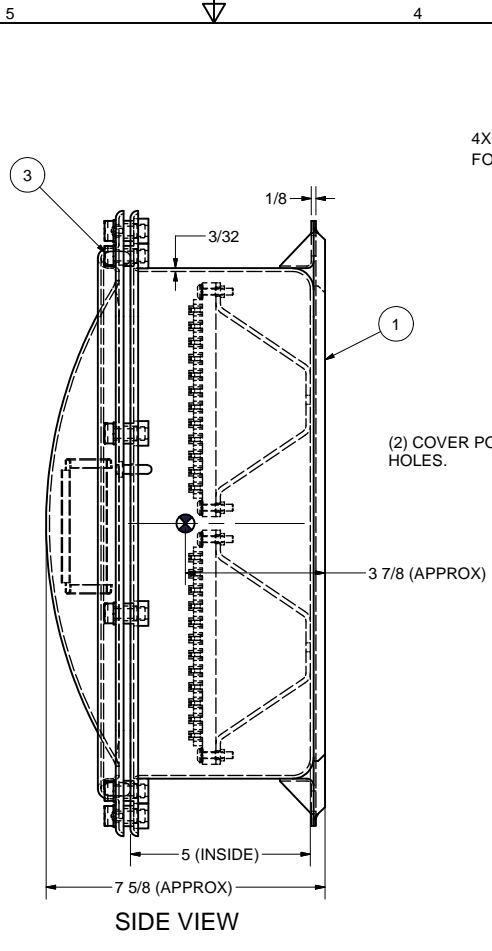
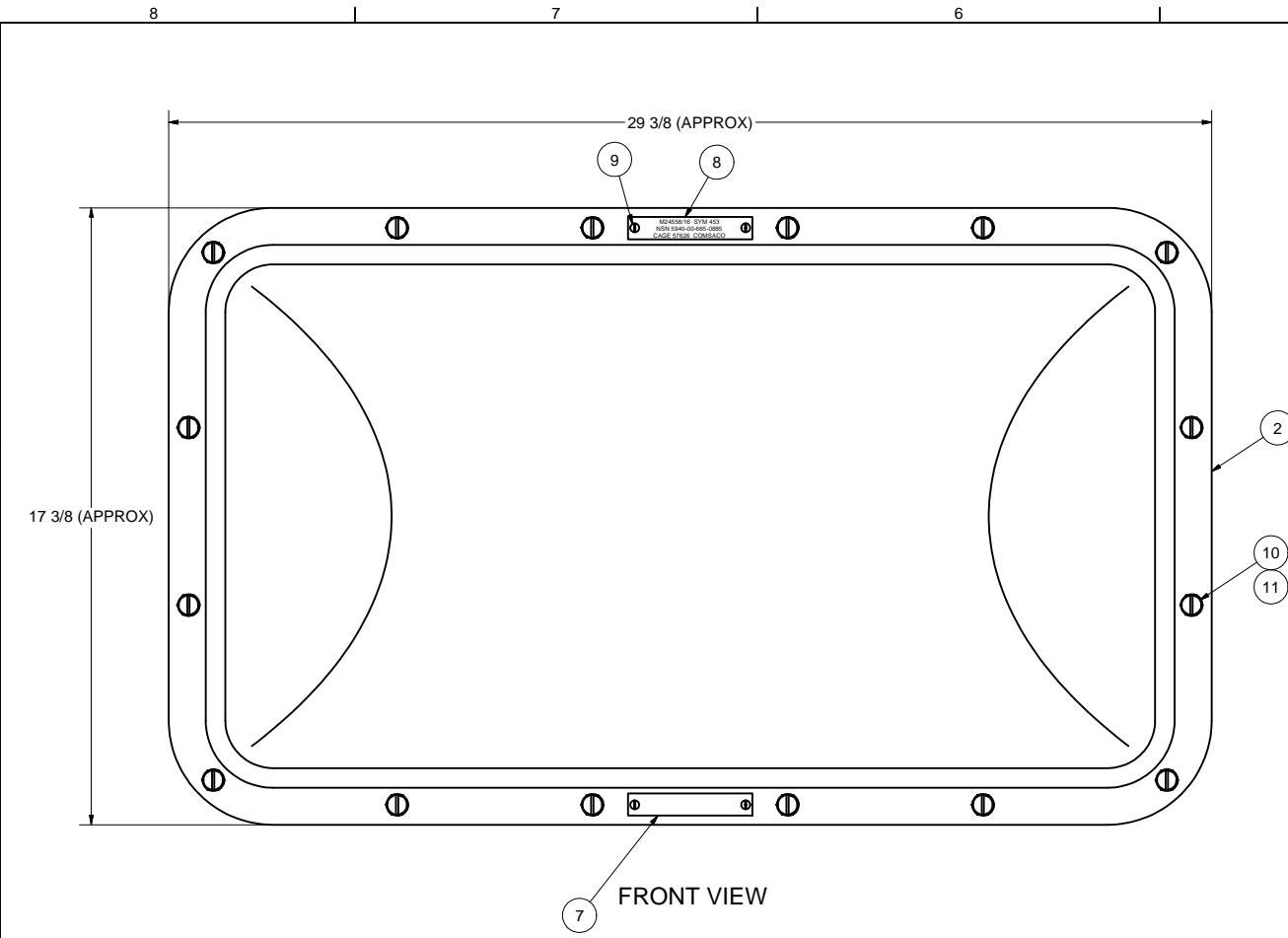
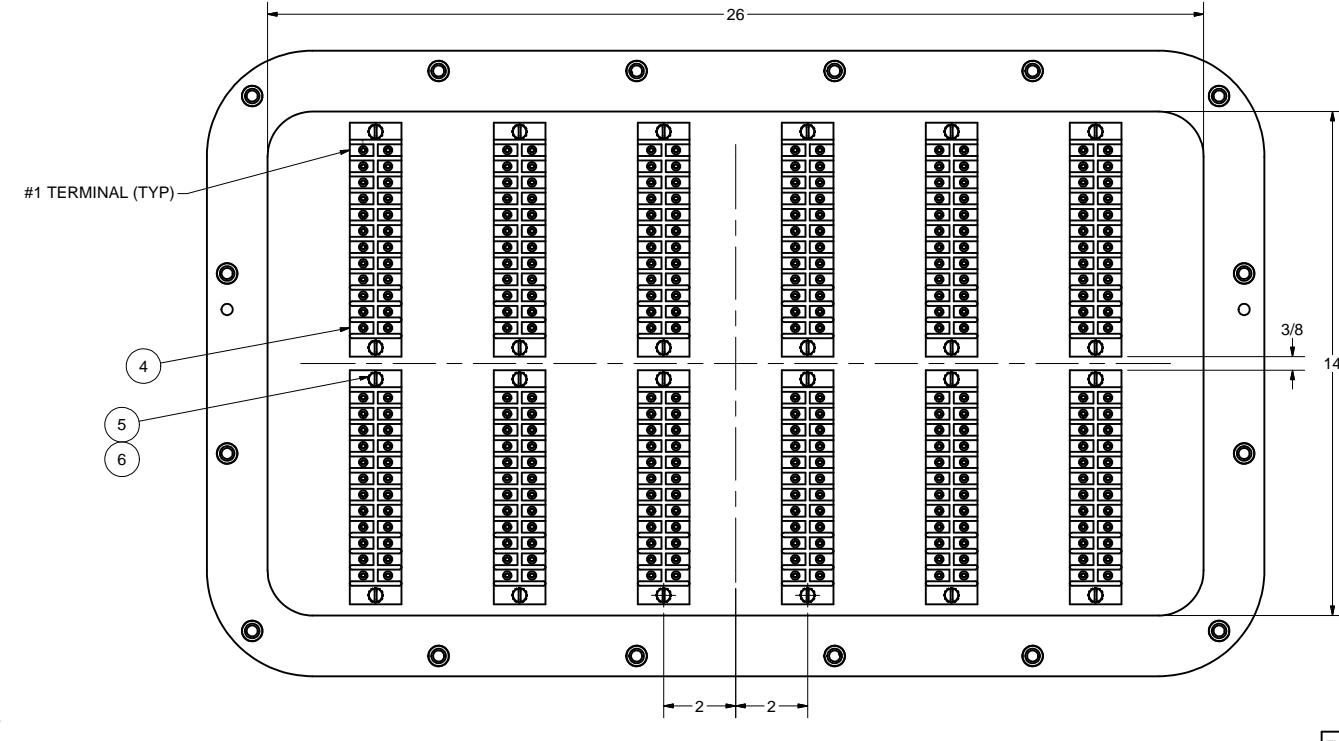


ZONE		REV	REVISIONS	DATE	AUTH
ALL	A		ADDED: SHOCK/VIBRATION APPROVAL TO NOTES. REVISED: DWG INTO CAD FORMAT. AUTH: MFR REQ.	5/1/14	RLF



M24558/16 SYM 453  
NSN 5940-00-665-0885  
CAGE 57626 COMSACO

ITEM 8, ID PLATE  
1/8" ENGRAVED TEXT



FRONT VIEW LESS COVER

- NOTES:
- THIS DRAWING DEVELOPED FROM MIL-DTL-24558/16.
  - RATINGS AND SPECIFICATIONS:
    - 600 VOLTS, 30 AMPS MAXIMUM PER STUD OF TERMINAL BOARD.
    - 288 TERMINALS, 864 WIRES MAX.
    - DEGREE OF ENCLOSURE: SUBMERSIBLE TO 15 FEET (SBM-15) PER MIL-STD-108.
    - MAGNETIC PERMEABILITY: LESS THAN 2.0 FERROUS MATERIALS: NONE.
    - WEIGHT: 51 LBS.
  - UNLESS OTHERWISE SPECIFIED, CABLE ENTRANCE DEVICES WILL BE PROVIDED AND INSTALLED BY THE INSTALLING ACTIVITY.
  - TERMINAL BOARDS ARE MOLDED BARRIER STUD TYPE, CLASS 6TB PER A-A-59125/12, MAXIMUM LUGS PER STUD IS 3. BU-SHIPS TYPE L81. STUDS ARE 6-32.
  - SHOCK AND VIBRATION APPROVAL GRANTED FOR THIS EQUIPMENT PER SUPERVISOR OF SHIPBUILDING, CONVERSION AND REPAIR, USN, NEWPORT NEWS, LTR 9072 SER SSN688C1-273E/0863, DATED 18 MAY 1993. SYMBOL 453 HAS PASSED TESTING PER COMSACO REPORT SV-1050 AND EAST WEST LABORATORIES TEST REPORT 32940-1, DATED 03 MAR 1993. TESTS INCLUDED LIGHTWEIGHT SHOCK GRADE A, CLASS 1, TYPE C AND TYPE 1 VIBRATION 4-33HZ.
  - BARREL NUTS FOR TERMINAL BOARDS TO BE PACKAGED SECURELY AND SHIPPED LOOSE INSIDE ENCLOSURE.
  - FINISH: INTERIOR ONLY WITH WHITE ENAMEL.

ITEM	QTY	PART NUMBER	DESCRIPTION
1	1	200321	BOX WELDMENT, BRASS, 14X26X5
2	1	200174-108	COVER WELDMENT, BRASS, 14X26 DOMED
3	1	100146-14	GASKET, 14X26 COVER, MOLDED RUBBER
4	12	6TB24	TERMINAL BOARD, 24T, 30A, 600V, DBL ROW
5	24	X-RHM-BRS-024-875	SCREW, RHM, BASS, 10-24 X 7/8"
6	24	X-ELW-PHB-10	WASHER, EXT TOOTH, PHOS-BRZ, #10
7	1	100260-1	INFO PLATE, BRASS, BLANK
8	1	100260-453	ID PLATE, BRASS, ENGRAVED
9	4	X-RHM-BRS-632-250	SCREW, RHM, BRASS, 6-32 X 1/4"
10	16	74031-5	BOLT, COVER, BRASS, 3/8-16 X 7/8"
11	16	AN960B616	WASHER, FLAT, BRASS, 3/8"

THIS DRAWING/DOCUMENT CONTAINS INFORMATION WHICH IS PROPRIETARY TO AND PROPERTY OF COMSACO, INC. IT IS DISTRIBUTED WITH THE UNDERSTANDING THAT IT WILL BE RETAINED IN CONFIDENCE AND WILL NEITHER BE DUPLICATED NOR COPIED IN WHOLE OR IN PART NOR USED FOR ANY PURPOSE OTHER THAN THAT FOR WHICH DISCLOSED WITHOUT EXPRESS WRITTEN PERMISSION FROM COMSACO, INC.

UNLESS OTHERWISE SPECIFIED DIMENSIONS ARE IN INCHES  
TOLERANCES ARE:  
FRACTIONS DECIMALS ANGLES  
+/- 1/64 .XX .XXX .005

REDRAWN  
CHRIS WINDLEY 4/30/2014  
ORIGINAL  
W WESTHOFF 7/25/1991  
QA  
MFG  
APPROVED

**COMSACO, INC.**  
NORFOLK, VA. 23502

TITLE  
**TERMINAL BOX, BRASS, 288T,  
SBM-15, SYM 453**

SIZE CODE IDENT NO DWG NO REV  
D 57626 404-453 A

NEXT ASSY USED ON SCALE SHEET 1 OF 1