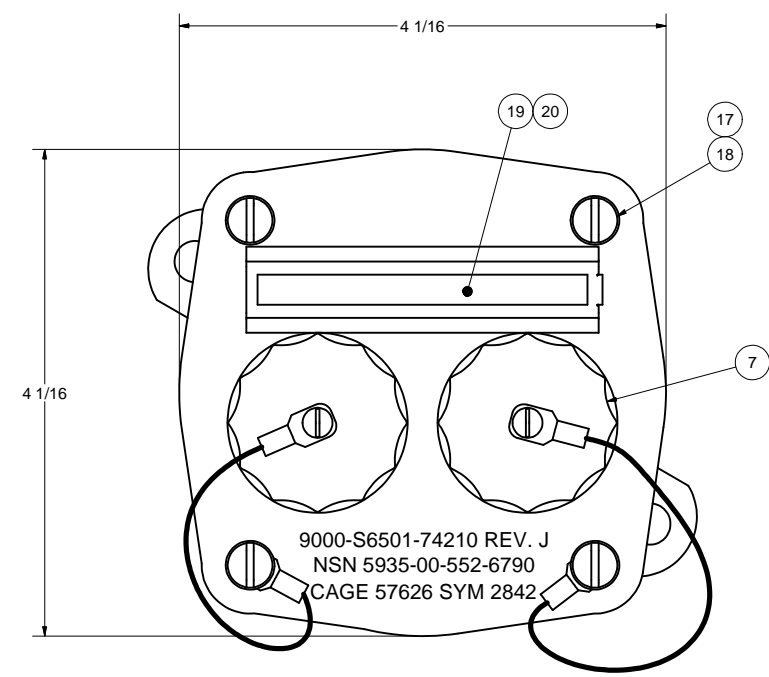
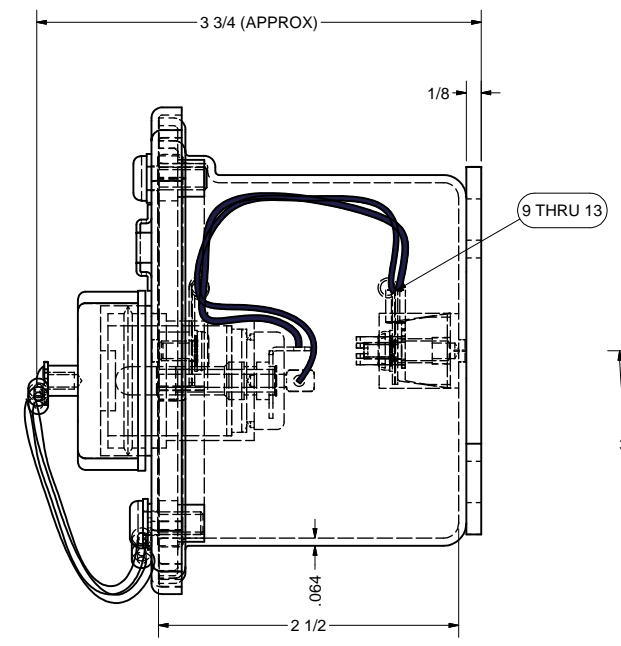


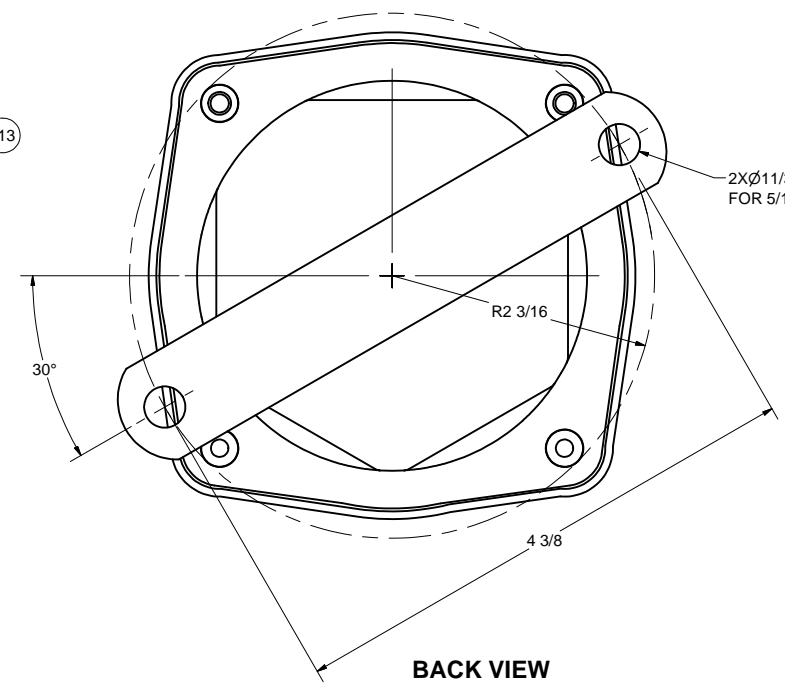
		REVISIONS		
ZONE	REV	DESCRIPTION	DATE	AUTH
—	A	CHANGE: P/N OF ITEM 1 & 2. SPECS OF ITEMS 7, 18 & 19.	10/12/92	WW
—	B	ADDED: INK STAMPING. CHANGED: P/N OF ITEMS 4, 6, 11, 18 & 19. DELETED: ITEM 7. REVISED: COVER MARKING.	4/30/94	WW
—	C	ADDED: JACK #. REVISED: ITEM 10 WAS INVERTED, SCHEMATIC.	1/13/95	WW
—	D	CHANGED: ITEM 13 WAS 1/4" LG, 14 WAS 5/8", 17 WAS 3/8", 15 WAS EXTERNAL TOOTH. ECO: 1019.	7/2/03	AW
ALL	E	REVISED: DWG INTO CAD.	1/27/14	AW



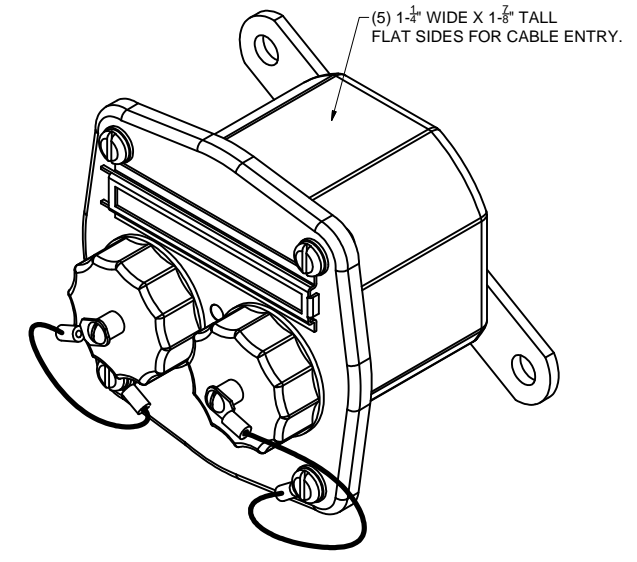
FRONT VIEW



SIDE VIEW

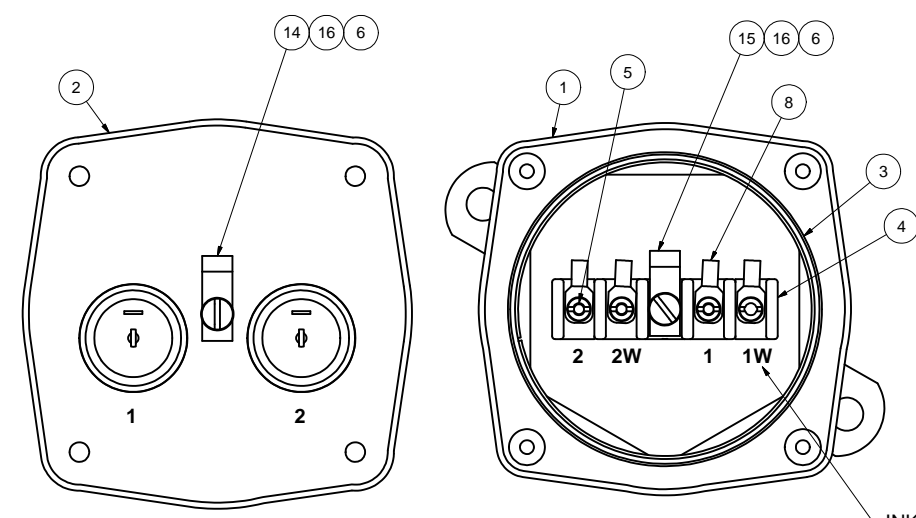


BACK VIEW

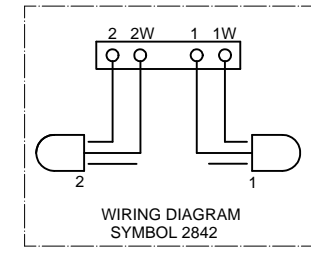


NOTES:

- THIS DRAWING DEVELOPED FROM NAVSHIPS DRAWING 9000-S-74210J.
- RATINGS:
  - DEGREE OF ENCLOSURE: SUBMERSIBLE 15 FEET PER MIL-STD-108E.
  - MAGNETIC PERMEABILITY: LESS THAN 2.0 FERROUS MATERIALS: NONE.
- UNLESS OTHERWISE SPECIFIED CABLE ENTRANCE DEVICES WILL BE PROVIDED AND INSTALLED BY THE INSTALLING ACTIVITY.
- MATES WITH PLUG SYM 2922, TYPE H39A PER NAVSHIPS DWG 74211.
- TOTAL WEIGHT IS 1.7LBS.
- THIS EQUIPMENT HAS BEEN QUALIFIED UNDER MIL-S-901D LIGHT WEIGHT HIGH IMPACT SHOCK, GRADE A, CLASS 1, TYPE A, HULL MOUNTED, BACK MOUNTING PLANE, UNRESTRICTED ORIENTATION AND MIL-STD-167-1 VIBRATION THROUGH GOVERNMENT APPROVAL LETTER 9072 SER CVN75PSA-273F/0006, DATED 20JAN2000. APPROVAL GRANTED THROUGH EXTENSION FROM TESTED EQUIPMENT SYMBOL 2843 WHICH WAS QUALIFIED PER AERONAV LABORATORIES, INC. REPORT 9-3948 AND COMSACO, INC. REPORT SV-1066 REV-. TESTS WERE CONDUCTED WITH SYMBOL 2922 PLUGS INSTALLED.
- FINISH: INTERIOR ONLY IN WHITE ENAMEL.



FRONT VIEW WITH COVER REMOVED  
LESS WIRING



WIRING DIAGRAM  
SYMBOL 2842

INK STAMP IN 1/8" PERMANENT BLACK.

Parts List			
ITEM	QTY	PART NUMBER	DESCRIPTION
1	1	200372	BOX WELDMENT, BRASS, 4" RND
2	1	200371	COVER WELDMENT, BRASS, 4" RND
3	1	MS28775-339	O-RING, GASKET, RUBBER
4	1	9TB4	TERMINAL BOARD, 4T, 35A, 300V
5	4	101250-3	BARREL NUT, BRASS, 6-32
6	2	100537-1	CABLE CLAMP, NYLON, W/LANYARD
7	2	400101	CAP AND CABLE ASSY
8	4	MS21004-4	TERMINAL LUG, REC, UNINSL, 22-18AWG, #6 STUD
9	4'	B-20 BLACK	WIRE, BLACK, 20AWG, 600V, M16878/1-BGE0
10	1	WM-JB-1	WIRE MARKER, #8 WHT PVC, BLK TEXT
11	1	WM-JB-1W	WIRE MARKER, #8 WHT PVC, BLK TEXT
12	1	WM-JB-2	WIRE MARKER, #8 WHT PVC, BLK TEXT
13	1	WM-JB-2W	WIRE MARKER, #8 WHT PVC, BLK TEXT
14	1	X-RHM-BRS-832-313	SCREW, RHM, BRASS, 8-32 X 5/16"
15	1	X-RHM-BRS-832-500	SCREW, RHM, BRASS, 8-32 X 1/2"
16	2	X-ILW-PHB-8	WASHER, INTERNAL TOOTH, PHOS-BRZ, #8
17	4	X-FLW-BRS-10	WASHER, FLAT, BRASS, #10
18	4	X-RHM-BRS-024-500	SCREW, RHM, BRASS, 10-24 X 1/2"
19	1	100479-2	MARKER STRIP, WHT WITH BLK CORE, PLASTIC
20	1	100478-2	TRANSPARENT STRIP, PLASTIC

THIS DRAWING/DOCUMENT CONTAINS INFORMATION WHICH IS PROPRIETARY TO AND PROPERTY OF COMSACO, INC. IT IS DISTRIBUTED WITH THE UNDERSTANDING THAT IT WILL BE RETAINED IN CONFIDENCE AND WILL NEITHER BE DUPLICATED NOR COPIED IN WHOLE OR IN PART NOR USED FOR ANY PURPOSE OTHER THAN THAT FOR WHICH DISCLOSED WITHOUT EXPRESS WRITTEN PERMISSION FROM COMSACO, INC.

UNLESS OTHERWISE SPECIFIED DIMENSIONS ARE IN INCHES  
TOLERANCES ARE:  
FRACTIONS DECIMALS ANGLES  
+/- 1/64 .XX .XXX .005

REDRAWN CHRIS WINDLEY ORIGINAL W WESTHOFF	12/10/2013 9/14/1992	<b>COMSACO, INC.</b> NORFOLK, VA. 23502 <b>JACK BOX ASSY, DOUBLE,          SBM-15, SYM 2842</b>
MFG APPROVED		
NEXT ASSY	USED ON	TITLE SIZE CODE IDENT NO DWG NO <b>D 57626 404-2842</b>
		SCALE SHEET 1 OF 1 REV E